

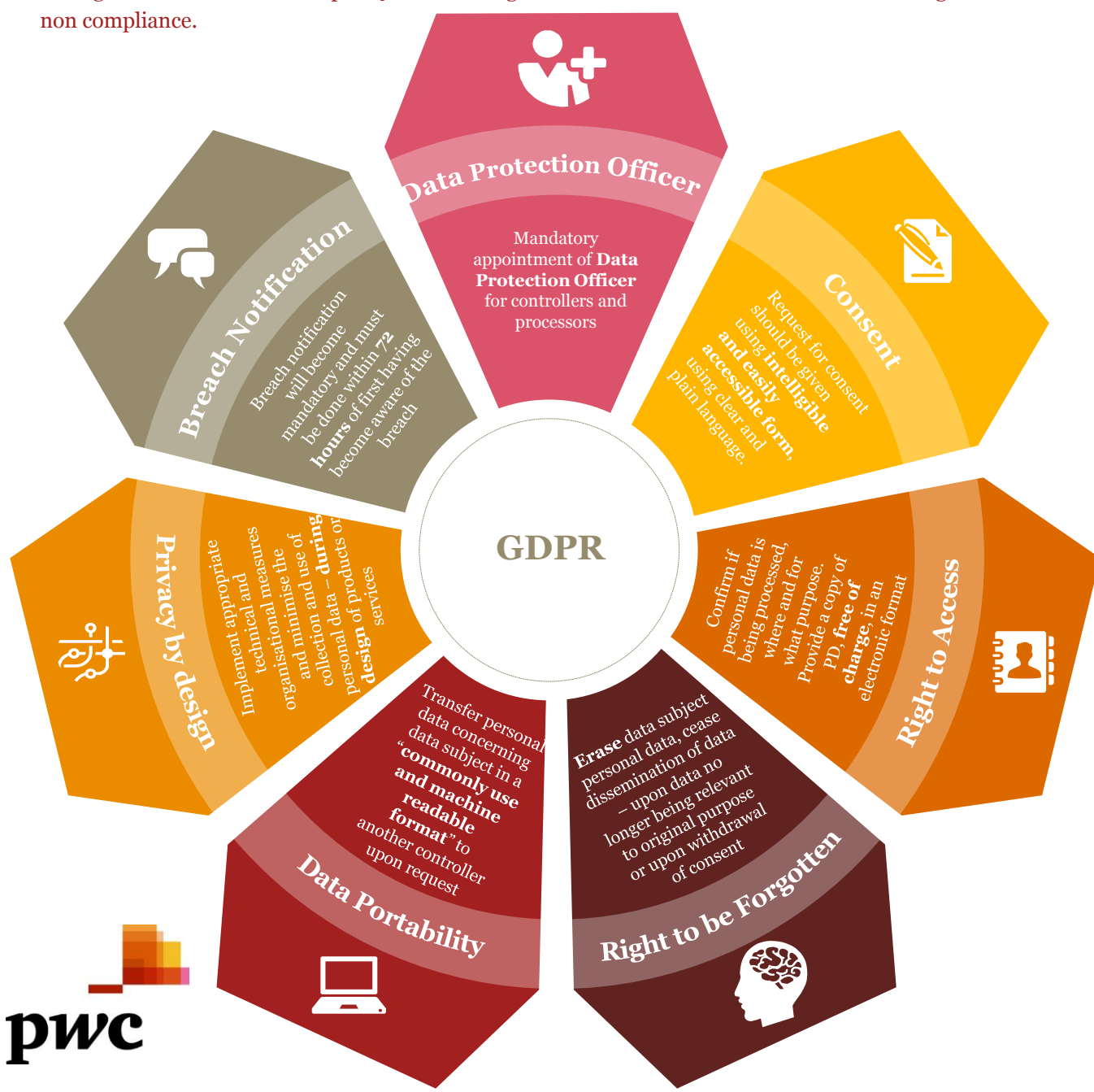
# General Data Protection Regulation (GDPR)

## Are you ready?






The GDPR is a new regulation seeking to unify data protection across the EU. It incorporates significant and new requirements for governing data and how it is used, collected, retained and shared. This will apply to all data controllers and data processors in the EU. The new data protection law would apply to the data processed by an organization situated within the EU. Additionally, the Regulation will have an extraterritorial effect.

### Did you know?

An organization can be fined up to **4%** of annual global turnover or €20 Million (whichever is greater) for non compliance.



## How do you comply?

<p>Perform impact assessment &amp; data discovery</p> 	<p>Perform Gap assessment to identify existing privacy capabilities</p> 	<p>Define Governance structure to coordinate, operate and implement remediation activities</p> 	<p>Implement processes and changes</p> 	<p>Establish regular compliance program to verify adherence to GDPR requirements</p> 
---	---	--	---	--

## PWC Service Offerings

<ol style="list-style-type: none"> <li>1. GDPR readiness assessment</li> <li>2. Data classification &amp; discovery</li> </ol>	<ol style="list-style-type: none"> <li>1. Privacy impact assessment for information systems and business processes</li> <li>2. Privacy and information security related policies review</li> <li>3. IT control and security assessment</li> <li>4. Privacy road map</li> </ol>	<ol style="list-style-type: none"> <li>1. Support in the set up of data governance structure, development of related privacy policies and processes</li> </ol>	<ol style="list-style-type: none"> <li>1. Conduct privacy awareness workshops or trainings</li> <li>2. Project Management Office</li> </ol>	<ol style="list-style-type: none"> <li>1. Compliance review of data privacy program</li> <li>2. Third Party Assurance reports (SSAE / ISAE)</li> <li>3. Data Protection Officer Advisory Support</li> </ol>
--	--	--	---	---

## Contact

**Tan Shong Ye**  
Partner  
6236 3262  
shong.ye.tan@sg.pwc.com

**Yap Yee Chin**  
Associate Director  
9733 7148  
yee.chin.yap@sg.pwc.com

**Michelle Xie**  
Senior Manager  
9624 6280  
michelle.qy.xie@sg.pwc.com