

# Connected Digital Enterprise

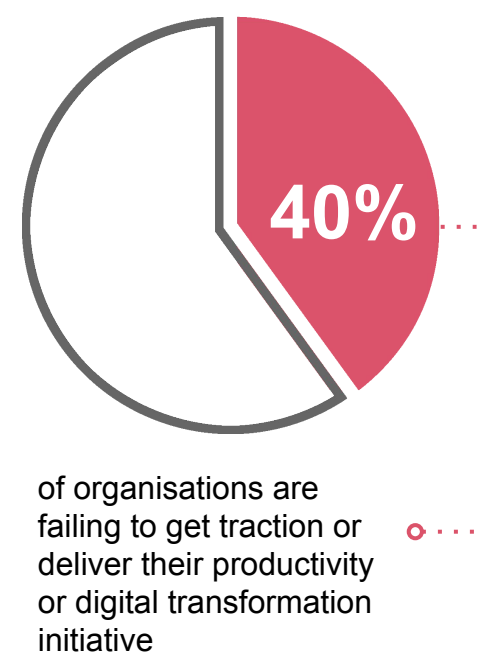
Bringing together people, processes and automation to power your digital transformation and drive business value



## Today's challenges

Agility and real-time information gives organisations the competitive advantage in today's era of big data. However, having access to information quickly might not always be as straightforward, especially in large enterprises or matrix organisations.

A deeper look at the organisation, structure, processes and culture typically reveals the near impossibility of real-time decision making. This is due to information being housed in silos across departments, resulting in time taken to gather clean data and process meaningful analysis.



## Key questions that need to be answered

1. **Productivity** - How can we deliver a significant step change in team productivity, employee engagement and operational resilience?
2. **Agility at scale** - How to use the evolving machine learning platforms to achieve real time decisioning?
3. **Work from home** - How can we increase connectivity and efficiency with front to back digitalisation to enable remote working?

With clear assessment and planning of existing digital assets and governance to identify the gaps, enterprise can turn the impossibility into a tangible reality.

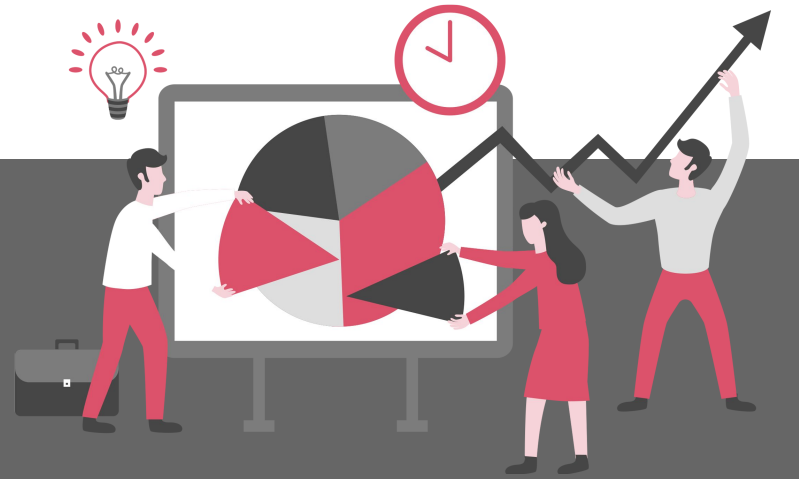
## Why Connected Digital Enterprise?

Intelligent decision making and achieving agility at scale is within arm's reach with our Connected Digital Enterprise (CDE). CDE is a new approach towards digital transformation, which brings together people, processes, and automation through a digital platform, for organisations to identify and address opportunities at scale.

The four key benefits of employing CDE are:

1. Increased organisational flexibility and better cost control
2. A significant increase in team productivity, employee engagement & operational resilience
3. Increased efficiency and reduced redundancy with front to back digitalisation
4. Real time decisioning with Artificial Intelligence

# Building Blocks



**Process Engineering:** Using process mining, simulation and re-engineering tools to improve process flow and create a connected organisation through workflow orchestration



**Intelligent Automation:** Combining algorithms and automation at scale by the Development, implementation and growth of the Digital Workforce



**Perform Plus:** Changing the way employees engage, excel and continuously improve in their work environments.



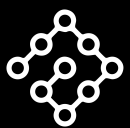
## Driven by Digital Enablers:



**Digital Twin** A virtual replica of processes and resources used to simulate multiple change interventions to Project the real world impact without the risks.



**Operational Performance Stack** Use of analytical tools to support hypothesis testing, including process and business constraints thereby understanding the current state and quantifying the case for change.



### Intelligent Automation

Use RPA, conversational and cognitive technologies that are designed based on best practices across industries.



**Perform Plus** Develop highly connected and engaged workers by delivering battle-tested coaching programmes with smart technology and data. This enables enterprises to leverage the wisdom of the communities.



### Workflow Orchestration

Deploy an enterprise-scale workflow that orchestrates the acceleration and of delivery business value across the organisation.



**Process Intelligence** Analyse the operational data from your existing systems using the clicks used by employees in their daily activities and identify the opportunities for process improvements and re-engineering.



### Data Manipulation and Visualisation

Increase both speed-to-insight and the level of insight, as well as visualise findings in a dynamic manner in real-time.





## What's next?

Starting with a gamified experience, our **Immersive Escape Room** program is tailored for the organisation to have hands-on experience to solve specific business problems with the **CDE Analyser**, a platform tool used to identify and prioritise the best fit opportunities for uplifting digital capabilities and productivity for any business scenario. In this 2-4 hour virtual event, participants also get to bring different groups of stakeholders across the organisation and hierarchy to help align mindsets and learn about what drives a connected enterprise of the future. In identifying gaps in the current processes, which is often overlooked in the day to day, participants get to discover the potential of CDE digital assets with the help of CDE Analyser and have fun with the 'art of the possible'.

To unlock the full potential of what digital transformation can bring to your organisation, we have to tackle people and processes and use automation to reduce the drag on the organisation where possible. While organisations tend to focus on process change, the more tangible aspects, culture and mindset, are often overshadowed. Therefore, organisations need to recognise that for sustainable and effective transformation, leaders need to better understand their stakeholders' needs and develop solutions that are long lasting and impactful. Digital transformation is a continuous evolution and the CDE offering aims to raise the bar a little more every day to enable our clients to achieve a truly intelligent digital enterprise of the future.

Find out more about PwC's Connected Digital Enterprise [here](#).

## Contact Us

### Chintan Ganatra

Partner  
CIO Advisory  
+65 9635 1520  
[chintan.s.ganatra@pwc.com](mailto:chintan.s.ganatra@pwc.com)

### Ashwani Kohli

Director  
CIO Advisory  
+65 9816 6451  
[ashwani.k.kohli@pwc.com](mailto:ashwani.k.kohli@pwc.com)

### Marc Philipp

Partner  
Management Consulting  
+65 6236 4008  
[marc.philipp@pwc.com](mailto:marc.philipp@pwc.com)

### Mansi Singh

Director  
Management Consulting  
+65 9663 6014  
[mansi.singh@pwc.com](mailto:mansi.singh@pwc.com)