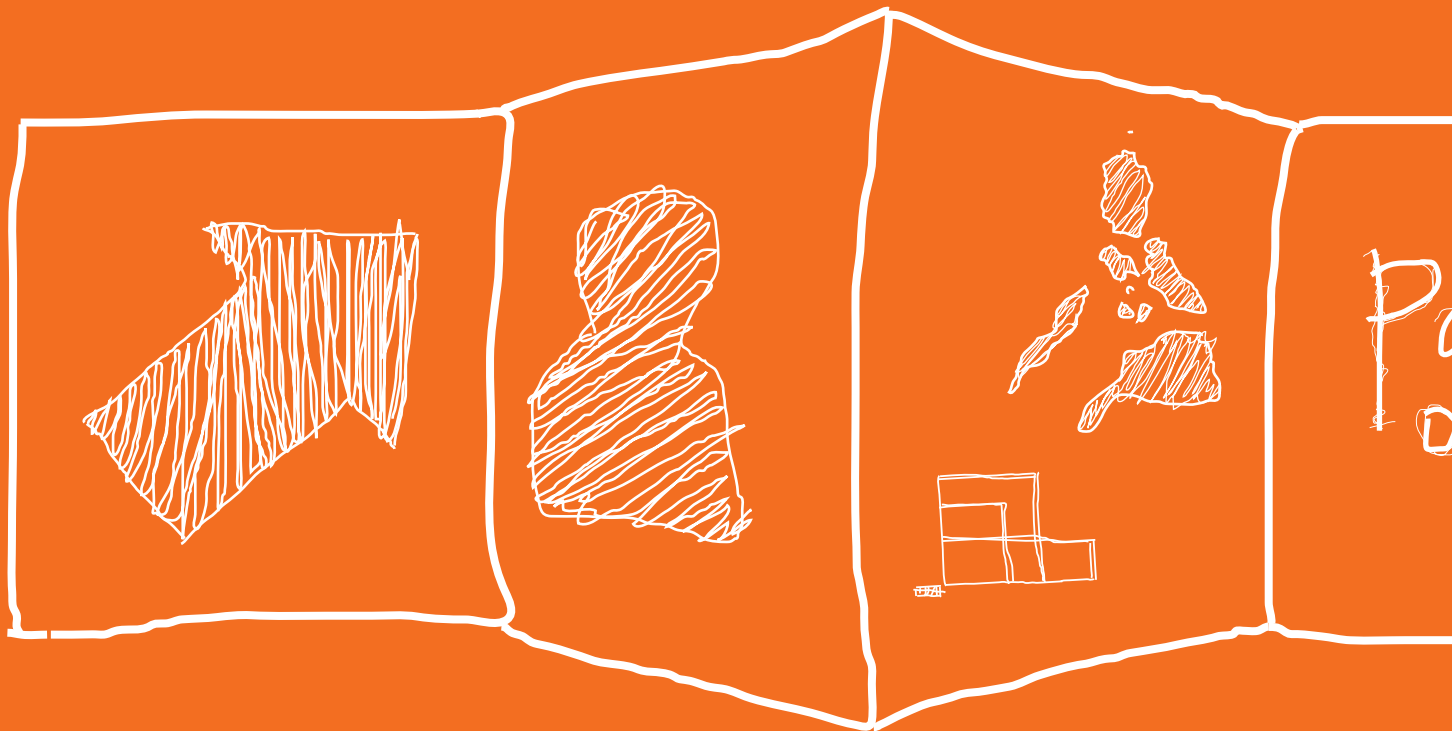


# *Sustaining hope* Corporate responsibility at PwC Philippines

*part  
of it:*



## What's inside



### Highlights | p. 4

Highlights in FY2014  
Our CR initiatives  
around the country

### Messages | p. 6

Chairman and  
Senior Partner  
Corporate  
Responsibility Leader

### PwC Philippines | p. 8

Isla Lipana & Co.  
The PwC network  
CR leadership

### CR strategy

Our aim and

# Sustaining hope



*Children of San Isidro, Busuanga, Palawan*  
Our cover depicts the power of hope as seen through the eyes of children who lived through Typhoon Haiyan. We dedicate this Corporate Responsibility Report to them and countless people who helped and continue to support in rebuilding the lives of our countrymen.



gy | p. 10

focus areas

## Our report | p. 12

Responsible business | 13  
Community engagement | 14  
Diversity and inclusion | 18  
Environmental stewardship | 20  
Acknowledgment | 24

## Spotlight

Isla Lipana & Co. celebrates 92 years  
as a major accounting firm in the Philippines | 9  
*Philippine Gems* | 11  
Bohol relief efforts | 15  
PwC Philippines joins UK House of Lord member in  
Leyte visit | 16  
Tourism with a Purpose: More meaning in  
our summer travels | 19  
Paper & PwC Forest | 20  
Seat of Hope | 21  
Posters | 23

## Highlights in FY 2014

700+

Number of people who participated in community activities



4,000+

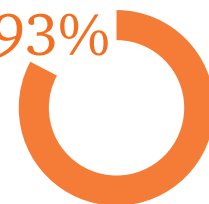
Number of volunteering hours



"I am satisfied with the actions PwC is taking to be socially responsible."

PwC Philippines Global People Survey 2014

93%



25,000,000

hits for our firm's *Philippine Gems* online survey

15/700+

groups and people doing our *Tourism with a Purpose* campaign

nine

staff on secondment

900+

participants to our *Prepare for Work* program



*first*

of its kind of awards program in the Philippines

PHP1.5m

Cash donations received from PwC PH employees for relief and rebuild operations



15+

Number of PwC member firms that donated for Typhoon Haiyan



PwC Forest

1 in 2015



Our CR initiatives  
around the country



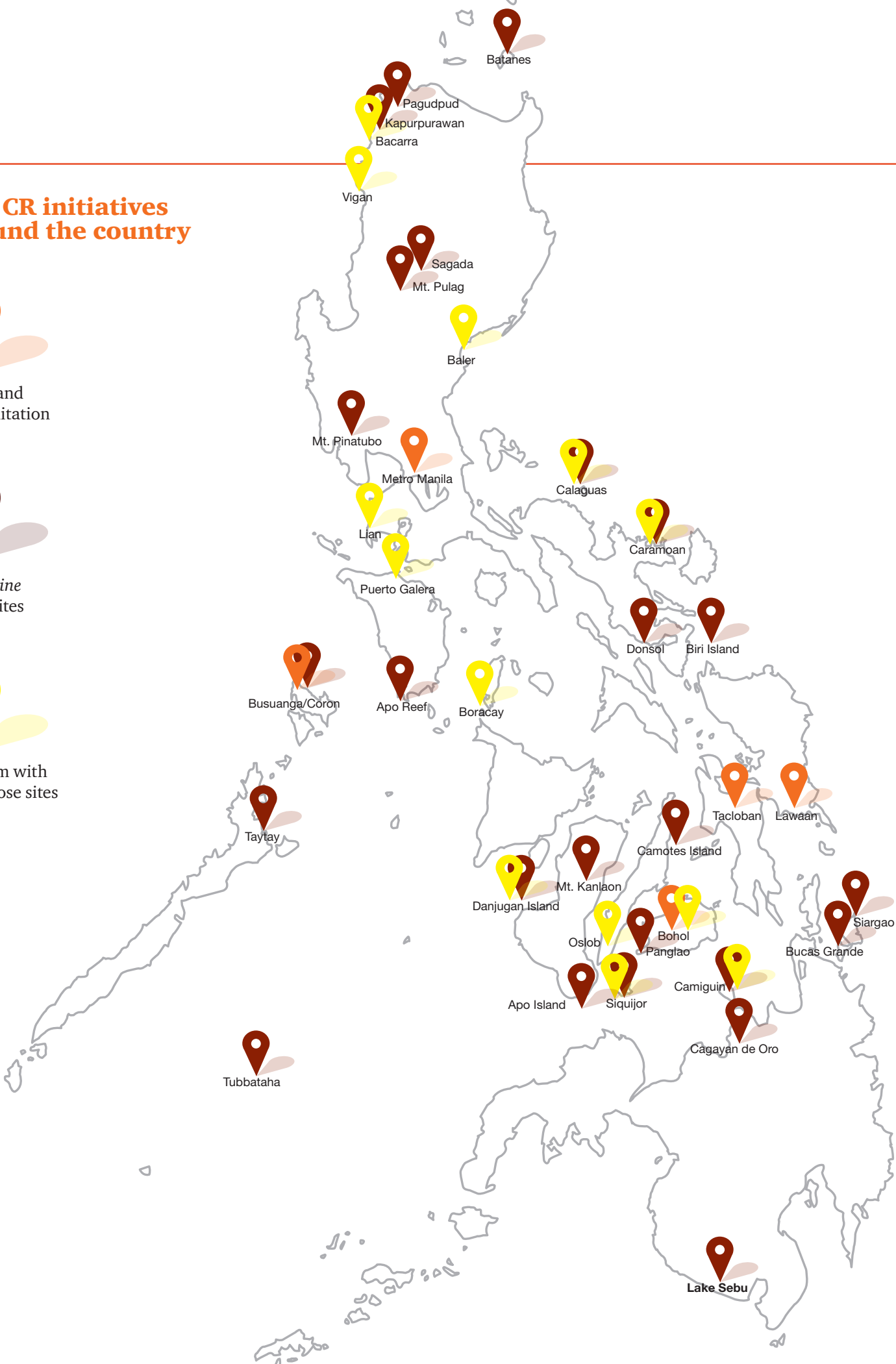
Relief and  
rehabilitation  
efforts



Philippine  
Gems sites



Tourism with  
a Purpose sites



## Our purpose

### Message from our Chairman and Senior Partner



Time and again, we as a nation have shown resiliency to face any challenges and hardships may it be man-made or by force of nature. At Isla Lipana & Co., we believe that we should work hand in hand in helping our fellow Filipinos by inspiring hope in times of deprivation. We believe that by doing things right, we become a catalyst for change that creates a more sustainable future.

What we learned from these challenges shaped our road map for Corporate Responsibility (CR). This year, we revisited our plans for corporate events and decided to allocate more resources to our efforts in helping our countrymen. We included CR activities even in our summer outings that had significant impact in giving back to the communities and sharing of our blessings.

The aftermath of the 7.4 magnitude earthquake in Bohol in October 2013 and Typhoon Haiyan in November 2013 has made us realise the need to devote more time and resources to our CR projects. While keeping in line with our four focus areas, the firm was quick to mobilise its resources in extending assistance to our staff who were affected by the recent disasters. Everyone was encouraged to do their share. Carton boxes were placed inside the office for

donations of clothing, toys and school supplies. Employees were also quick to respond to the call for volunteers from organizations, such as the Philippine Red Cross.

While we belong to a network of member firms operating independently, we felt the presence and support given by our PwC family from the outpouring messages of concern and prayers and donations sent for the victims of Typhoon Haiyan. As of March of this year, we received a total of PHP7.7m donated by the PwC firms around the world.

In coordination with the Department of Education, we allocated the donated funds to the repair of three schools in Eastern Visayas. The devastation in these towns received little publicity and support compared to Tacloban, located only two hours away.

Isla Lipana & Co. Foundation refocused its target areas for the Seat of Hope project to the Typhoon Haiyan-devastated schools. The firm and the foundation donated a total of 1,500 school chairs to 28 classrooms hit by the typhoon. This is in partnership with Philamlife Foundation.

In 2013, we launched the *Philippine Gems*, our own way of helping the

“... a greater appreciation of things, so that a sense of purpose precedes vision and strategy.”

~ Alex Cabrera, Change for the better, Philippines (*The Philippine Star*)



tourism sector by promoting the Top ten next tourist destinations via public online voting. The *Philippine Gems* project has given us more opportunities to be engaged in the community. We plan to promote these sites further by focusing most of our CR activities in these areas. The 2014 tax calendar has been produced to support the campaign while a coffee table book will be released soon.

As our PwC Global Chairman Dennis Nally shares, “from where we stand today, it is difficult to predict how the world will change.” Though this may hold true to the country and the Philippine firm in the coming years, I believe that we are more than ready to brace challenges. The firm stands prepared to face the demands in climate change and demographic shifts. PwC Philippines, like our people, will continue to be strong and passionate in answering the call for action as recently manifested. Corporate Responsibility is an integral part of our being. We will continue to deliver quality work to our clients, lend a hand to communities, and with integrity, help build a better country.



Alexander B. Cabrera

## Message from our Corporate Responsibility Leader



It is with great pleasure to share with you the first PwC Philippines Corporate Responsibility report. While much of the highlights of this report are focused on our disaster response and relief efforts for victims of the earthquake in Bohol in October 2013 and then Typhoon Haiyan in November 2013, we are pleased to report to you that the firm has been very active in aligning our programs with our network's focus areas: responsible business, diversity and inclusion, community engagement and environmental stewardship.

It is a blessing indeed to be a part of the firm's Corporate Responsibility Team and I will always be grateful for the opportunity to work with generous people in the office and in the PwC Network to make a difference and be “part of it”.

You will all be proud to know that we are a network of kind and compassionate people. We are blessed with big-hearted volunteers within the firm and the network, and supportive institutions and organizations, which share the same objectives in creating greater impact in delivering help, support and care to others.

We hope that we will be able to continue to inspire and communicate what Corporate Responsibility is all about. As our Chairman and Senior Partner, Alex Cabrera has shared in his message, we will continue in doing the right things and be a catalyst for change. We can all just be excited of the greater things ahead for the firm and we will consistently remind ourselves to translate our accomplishments to more projects that will make each one of us “part of it”.



Gina S. Detera

## *Isla Lipana & Co.*



*Isla Lipana & Co. is the  
Philippine member firm of  
the PwC global network*

Our firm has provided professional services in the Philippines for 92 years. We stick to the highest quality standards in delivering audit and assurance, tax and advisory services within and outside the Philippines.

Our diverse team of experienced professionals includes accountants, tax advisers, systems analysts, economists, human resources professionals, project development managers, industrial engineers, and investment advisors.

Isla Lipana & Co. performs audit, taxation, advisory and Japanese business services.

We deliver quality services to our clients through our main office in Makati City and our branch office in Cebu. We now have 20 partners and over 700 professional staff.

## *The PwC network*

**776**  
locations

**US\$32bn**

revenues for the fiscal year ended  
30 June 2013

**157**  
countries

**184,235 people**  
including 9,597 partners and  
174,638 staff

PwC helps organisations and individuals create the value they're looking for. We're a network of firms in 157 countries with more than 184,000 people who are committed to delivering quality in assurance, tax and advisory services. Tell us what matters to you and find out more by visiting us at [www.pwc.com](http://www.pwc.com)



## Isla Lipana & Co. celebrates 92 years as a major accounting firm in the Philippines



Cunanan



Florento



dela Paz



Isla



Lipana



Lopez



Cabrera

In 1922 Charles P. White and Percival S. Page opened an accountancy practice in the Philippines called White, Page & Co. Over the years the firm underwent several name changes — from Stewart, Cunanan & Co. to Joaquin Cunanan & Co. and Isla Lipana & Co. Under the leadership of its past chairmen and senior partners, the firm continues its legacy of integrity and quality work.

### CR leadership

#### PwC PH CR Team

Headed by Assurance partner, Gina Detera, the firm's Corporate responsibility core team is composed of 15 volunteers from different departments and lines of service. The members provide volunteer hours to help in the planning and execution of the firm's CR activities.

Chairman and Senior Partner

CR Lead Partner  
CR Director  
CR Manager  
Core Team

Volunteers



Established in 2007, the Isla Lipana & Co. Foundation, Inc. is a non-profit independent organisation composed of the firm's present and former partners in the Board of Trustees. Retired PwC Partner Blesilda Pestaño, sits as the current chairman. The Foundation aims to promote social awareness and responsibility.

# Corporate Responsibility strategy

## Strategy

At PwC we believe in being ‘part of it’: part of the global conversation and movement towards responsible business practices that create positive change in the world.

We have many capabilities that are relevant to CR – the same ones we use in our businesses every day – and we aim to put these to use working with others to make a difference. We help organisations around the world strengthen their own CR agendas through the many services that we provide every day.

However, we want to go further. Through our own CR agenda, we can be part of the solution to global challenges in two ways. We set out our strategic intent as:

**Doing the right thing**, which means playing our part on responsible business issues that are central to our business – from the quality of our services and the diversity of our people, to our engagement with communities and our environmental footprint.

**Being a catalyst for change**, which is about using our skills, voice, and relationships to work with others and influence activities that make a difference, create change and have a lasting impact on the world around us.

These aims form the core of our global CR Strategy. Across the PwC network, our firms support these network-wide goals. To align and structure our CR activities across the network, we focus on four areas in which PwC people across the world can play their part:

1. **Responsible business:** focusing on issues on ethics, integrity and building trust; creating new client services; creating new reporting standards; developing approach to responsible and ethical procurement
2. **Diversity and inclusion:** encouraging open minds; creating career opportunities; creating leaders; creating better work places for our people
3. **Community engagement:** supporting education programmes; supporting social entrepreneurs; raising reporting standards for non-for-profit sector; contributing to disaster recovery
4. **Environmental stewardship:** creating new client services; creating a new language for business decisions; reporting our green house gas emissions; supporting the creation of new water management methods; creating new sustainable office environments; engaging our staff

## We aim to:

*Do the right thing*

*Be a catalyst for change*

## We focus on:

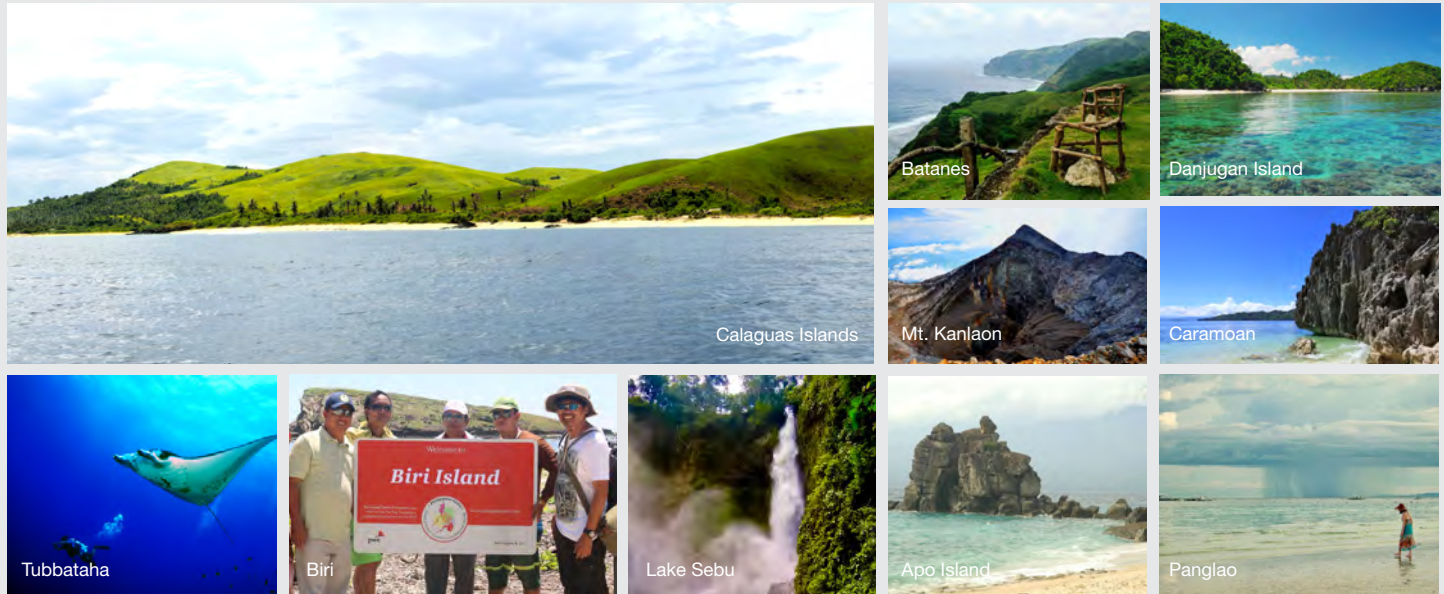
responsible  
business

diversity &  
inclusion

community  
engagement

environmental  
stewardship

## Philippine Gems: Our journey continues



How come an auditing firm picked a tourism campaign as its major corporate social responsibility project?

We owe it to our country to make its treasures known to its people and pave the way to development and a better future for Filipinos.

This is the reason why we launched a nationwide online survey to discover the next top Philippine tourism destinations. The survey garnered a staggering 25m hits online.

The project was a collaboration among our firm, the country's top tourist bloggers, academe, media personalities and the government.

But our journey has not stopped when we announced the winning destinations.

We aim to extend support to these wonderful places by continuing to promote it in our communications, conduct our CR work in their communities whenever possible and try to connect their local government units to national development agencies.

Our popular Tax Calendar has featured the sites. Just recently, we started awarding the special *Philippine Gems* welcome markers to these places and encouraged our people to include these sites in their summer outings. We are also producing a *Philippine Gems* coffee table book soon.

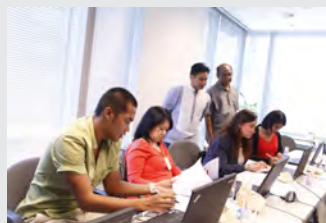
The *Philippine Gems* and its forerunner nation-building campaign, *Philippine Resiliency*, and similar future projects will remain part of our corporate responsibility work. See [www.philippinegems.com](http://www.philippinegems.com) for more info.



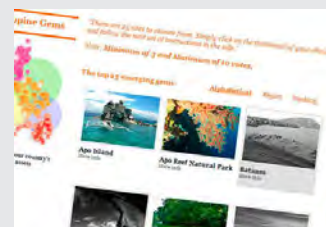
**Advocating the Philippine Gems.** Tri-media promotion to improve awareness of the *Philippine Gems* project



With former US Ambassador to the Philippines, Harry Thomas, during the offline promotion



The judges



One email, one vote for the voting site



Tourists proudly blog the *Philippine Gems* sites

## part of it: Reporting what we committed

This comprehensive report has been prepared to inform our publics of our Corporate Responsibility efforts, especially at a time when our country has been beset by calamities, one after the other in the last few months.

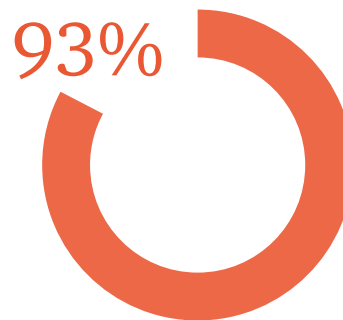
Our call for assistance in the midst of this crisis received overflowing support in cash and in kind and in volunteer time from our employees and from the PwC network. We owe this report to our various stakeholders to be transparent in all our CR activities, especially to our people who volunteered and

generously participated in their own special way.

We are happy to share our initiatives, accomplishments big or small, as we continue to strategically align our CR efforts on the four focus areas of corporate responsibility. This report may not cover stakeholder relations and other quantitative comparison and analysis, but we hope to tell a story that will inspire and communicate what we have been part of: helping and giving back to those who need it most.

### Our people believe in what we do

Results from our firm's annual survey were among the best ratings in the PwC network.



*"I am satisfied with the actions PwC is taking to be socially responsible."*

2014 PwC Global People Survey



4,000+

Number of volunteering hours



**Volunteers:** Bringing joy to the community of San Isidro. This remote island in Busuanga, Palawan received very little support after Typhoon Haiyan.



## Responsible Business

Focusing on issues, ethics, integrity and building trust



### “Advanced” rating and the Integrity Initiative Summit Sharing our best practices to inspire change

Isla Lipana & Co. was validated as among the very few “Advanced” companies in terms of integrity best practices.

The firm also supported the 3rd Integrity Initiative Summit organised by Integrity Initiative, a private sector-led campaign aiming to strengthen ethical standards in society. It aspires for a level playing field for business, where ethical companies enjoy competitive advantage in both government and private sector transactions. This initiative is implemented by the Makati Business Club and the European Chamber of Commerce of the Philippines.

### Tax Calendar

#### Encouraging compliance

One of the most sought-after publications of the firm is our Tax Calendar that lists all important payment and registration schedules from the Bureau of Internal Revenue, the Securities Exchange Commission and other government agencies. Through this, our firm encourages business owners to plan ahead and ultimately do their part in the commerce of our country.

The 2014 Tax Calendar features the top destinations from the firm’s *Philippine Gems* online survey. By producing the tax calendar with these scenic photos, we also hope to contribute to our country’s tourism industry and boost economic activities in these communities.

### Our code of conduct

The only way we do business

We live by the core values of excellence, teamwork and leadership



## Community engagement

Contributing to disaster recovery

# Responding to Typhoon Haiyan

The immediate and total outpouring of support has outshone the damage of the worst typhoon ever recorded. Funds donated through our firm are being used to carry out repair and rehabilitation in areas hit by Typhoon Haiyan.

1

### Appeal for help

Isla Lipana & Co./ PwC donation drive and immediate relief effort



2

### Being there for them

Immersion, assessment and understanding the needs of communities



3

### Rebuilding hope

Medium and long-term rebuilding efforts



4

### National collaboration

Supporting the country's rehabilitation and recovery





November 2013

Just three days after the typhoon struck, we started pooling our support resources

Up to February 2014

We began our relief efforts and continued our fund drive and immersion activities

April 2014 to present

We implemented a plan for school and community rehabilitation

Starting in May 2014

Work began for the Presidential Assistance for Rehabilitation and Recovery



**PHP1,500,0000**  
Firm cash and in-kind donation

**Donations from our partners and staff for**

Philippine Red Cross

Rotary Club

Management Association of the Philippines

Catholic Bishops of the Philippines

PwC relief efforts to Coron, Palawan

Affected PwC staff

**US\$1,000,0000**  
PwC global network donations

Donations from the PwC network of firms reached almost US\$1m

PHP7m was turned over to the Philippine firm. Some PwC firms gave directly to global disaster response organizations

The donations received by the PH firm were earmarked for medium- and long-term recovery and rehabilitation efforts(see page 17)

**Spotlight**

**Bohol Earthquake Response**

More than 300 families, countless patients in hospital tents and community health centers, and more than a hundred children benefitted from the PwC Philippines' relief mission held from 15 to 16 November 2013 in three municipalities of Bohol. These are the survivors of a 7.2 magnitude earthquake that shook the island province in October 2013.



Medicine distribution in Loon



Relief distribution in Antiquerra



Relief distribution in Maribojoc



### *Christmas Party for the Kids of Busuanga*

Some 600 children of Busuanga, Palawan experienced perhaps their most unforgettable Christmas ever when our Corporate Responsibility (CR) Team traveled to this remote area to hold a Community Outreach program last December 2013.

Retired PwC PH Partner, Myrna Fernando and PwC US manager Michael Murphy and wife Michelle, joined the CR Team as volunteers.

Busuanga residents suffered the same brunt of super Typhoon Haiyan when it made a final stop in this place before exiting the country.



### *Isla Lipana Foundation sponsors “Cinderella” benefit show for the Seat of Hope project*

Isla Lipana & Co. Foundation, led by its Chairman Bles Pestaño and its officers raised funds for the “Seat of Hope” project to donate classroom chairs in selected areas in Central Visayas devastated by Typhoon Haiyan.

The Foundation sponsored Rodgers & Hammerstein’s “Cinderella”, a Resorts World Manila production held last 8 December 2013 as its most recent fundraising activity for the “Seat of Hope” project.



#### **Spotlight**

### **PwC joins UK House of Lord member in Leyte visit**

PwC Philippines joined Rt. Hon. Lord Jack McConnell of Glenscorrodale, a UK Parliament member, in his recent volunteer work for “VSO Bahaginan” where he visited Tacloban City and certain municipalities for a multi-sectoral discussion on the continuing Typhoon Haiyan rebuilding efforts.



**Tacloban City**  
Meeting with members of the United Nations and international and local civil society groups actively helping in rebuilding efforts



**Dulag, Leyte**  
Discussion on Typhoon-resilient shelters with the community



**Capoocan, Leyte**  
Meeting with local leaders to discuss livelihood programs



**PwC dinner, Makati City**  
Lord Jack shared his experience with retired PwC PH partner Jenny Arciga and the CR team led by Gina Detera





**PHP7.7m** where the donations went

## Classroom repair

As of July 2014, repairs of six classrooms in Lawaan, Samar had been completed.

**PHP1.612m**

## 1,500 Seat of Hope chairs

Through Isla Lipana Foundation and PhilamLife Foundation, we supplied classroom chairs and teachers' desks to the 28 newly-built **Philam Paaralan** schools in areas hit by Typhoon Haiyan.

**PHP1.046m**



## Shelter construction

In coordination with Gawad Kalinga (GK), we donated funds for the construction of one village — homes for 20 families — in Lawaan, Samar. As of July 2014, we have released **PHP1.65m** for the construction that commenced in August. Completion of 20 houses is in December 2014.

**PHP3.300m**



## Collaboration work with the Presidential Assistance for Rehabilitation and Recovery (PARR)

Supporting the country's rehabilitation and recovery for Typhoon Haiyan



- PwC Philippines and PwC global leaders have committed to provide consulting services to PARR.
- PwC partners and senior staff from here and PwC US will be deployed to PARR.
- PwC has earned a reputation as the leading global reconstruction and development advisor having expertise in some of the world's worst disasters, such as Hurricane Sandy in the US, Haiti's major earthquake and the South Asian Tsunami.

## Diversity and Inclusion

Creating better workplaces and opportunities for our people

### *FUN-tastic Friday* A party for all



To promote a non-sectarian celebration of Halloween, the firm mounted FUN-tastic Friday. Held during the last Friday of October, FUN-tastic is a celebration of positivity and great possibilities where participants are encouraged to dress

up as someone inspiring, like a favorite super hero or celebrity. Work stations were adorned and designed with recycled materials. The activity pushed everyone to be creative, innovative and most of all — fun.



### *SportsFest*

#### *Wellness at play*

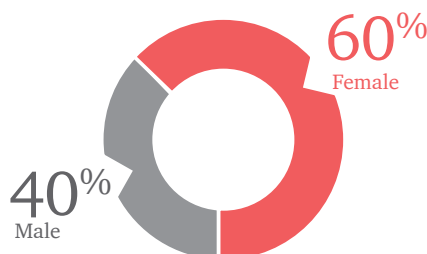
We are a firm of talented and competitive people and we demonstrate it during our annual Sportsfest. Each department sends its best players to compete in the basketball, volleyball, chess, bowling and badminton events. The much-awaited cheerdance contest kicks off the opening day of the games. Winning teams get to display their trophies at work, a year of bragging rights and the spirit of teamwork and camaraderie.

### *Vitamins, massage and support for nursing mothers*

#### *Wellness at work*

Our office supports our people in performing tasks for our clients, specially during the busy season. A regular supply of Vitamin C is distributed to all employees. A group of professional blind masseurs provide relief and relaxation. We provide a supportive environment to enable breastfeeding employees to express their milk during work hours. A private place has been arranged to serve as nursing room.

### *Gender equality is alive in our workforce*



### *Global mobility*





## Spotlight

### Tourism with a Purpose: More meaning in our summer travels

Our firm encourages all employees to plan their group summer travels by including a corporate responsibility activity in their itinerary.

Employees were also asked to be creative and consider holding their trips in any of the *Philippine Gems* sites.

The result was overwhelming as 15 groups from different departments and LOS organised CR activities such as mangrove and coastal clean-up, feeding program for school children, repainting of schools and *calesa* (horse-driven carriage), and donation of books and school supplies.



Mangrove clean-up in Siquijor  
**Finance**



Feeding program and school supplies  
donation in Baler, Aurora **Tax Consulting**



School repainting and school supplies in  
Lian, Batangas **Tax Support**



Calesa repainting and school supplies in  
Vigan, Ilocos Sur **Tax CAS**



School supplies and bagging of soil for GK  
Village in Puerto Galera **Tax IAS**



Brigada Eskwela in Caramoan,  
Camarines Sur **WMS**



Coastal clean-up in Oslob, Cebu  
**Human Capital**



Feeding program and school supplies  
donation in Bacarra, Ilocos Norte **GTS**



Brigada Eskwela and donation of  
slippers in Camiguin **Assurance A**



Slippers and art supplies donation in  
Boracay **PwC Consulting Phils.**



Donation of school supplies in Baler,  
Aurora **Assurance C**



Coastal clean-up, donation and installation  
of trash bins in Calaguas **Risk Assurance**



Coastal Clean-up and donation of books in  
Danjungan Island **Markets & Management**



House build in Bohol  
**Assurance B**



School supplies donation in Boracay  
**Deals Advisory**

## Environmental Stewardship

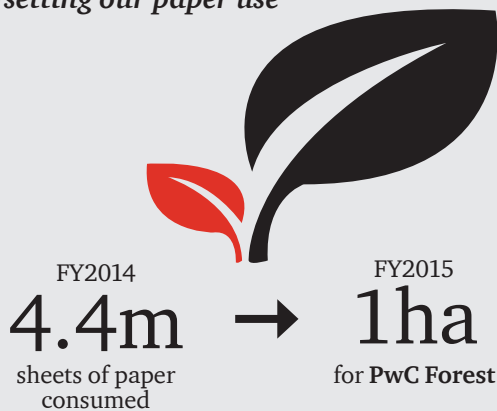
Minimising our environmental impact

### Less Paper campaign

This program aims to reduce the use of paper and printing in our workplace. It covers from quick but high impact solutions to decrease paper use, to long-term initiatives that will eventually help us achieve a paperless office environment. While the drive focuses on minimising the use of paper and printing, it also addresses the issue of retaining paper use for legal, security and business transaction purposes.

### Spotlight Paper & PwC Forest

#### Offsetting our paper use



#### Going digital

24   
estimated number of trees saved by using ecards and ebooks



## Less Paper Office

Cut the clutter, work efficiently and save the planet with these simple reminders:



#### "Think before you print"

Do you really need to print it? It's not only paper you'll consume precious toners and inks as well. For more info, read the Think Green reminders.



#### Use digital copies

Either as back-up or not, documents in digital form are easy to file, easy to search and easy to distribute.



#### Prefer electronic subscription

If available, get the digital copy of your favorite reads. Own an electronic library where any publication can be zoomed, cut, annotated and shared.



#### Get paperless billings and faxing

Service providers offer incentives if you opt for paperless billings. Remember as well that faxing consumes twice paper per transmission — the thermal paper and usually a photocopy.



#### Scan and store it

Scanners are smarter today. Aside from capturing contents, it can detect and translate scanned texts for easy editing. After the scan, paper documents can now be returned to its sender or go directly to your recycling tray.



#### Keep one notebook

Notebooks are indispensable in taking down notes, — so be faithful. Use every page before getting a new notebook.



#### Don't hoard papers

In most situations, hoarding is basically unhealthy. Get what you need and manage what you have.



part of it:

For more information, visit the **PwC Philippines Corporate Responsibility Spark Page**.

### Earth Hour

Every year the firm takes part in celebrating Earth Hour and encourages its employees to turn off non-essential lights or gadgets for an hour. Submission of photos, changing of profile picture in *Spark* and other social networking sites and Earth Hour email signature were some of the activities done to promote this event.



### Lunch Lights Out

Our little way in energy conservation and reducing carbon footprint is to turn off lights during lunch time (12pm-1pm).



## Community engagement

Supporting education programmes



### *Let's Prepare for Work*

This is a whole day program of lectures, sharing and simulations for graduating students and Cetified Public Accountants (CPA) board examination reviewees. The goal is to prepare participants so they have a better chance of securing employment in their organisation of choice.

8&6

Eight runs in six campuses/review centres

900+

Over 900 participants

### *Scholarships and Professorial Chairs*

Through the Isla Lipana & Co. Foundation, Inc., the firm has actively supported deserving and intelligent accounting students from public universities to make sure that they will be able to fulfil their dreams. Coaching sessions and grants to finance review expenses in preparation for the CPA licensure exam are also given.

To provide quality education and promote innovative accounting practices in the academe, the firm is also sponsoring a Professorial Chair in Business Administration Major in Accountancy at the University of the Philippines.

#### Spotlight

### **Seat of Hope**



In partnership with the Isla Lipana & Co Foundation, Inc. the Seat of Hope project aims to provide quality school chairs to flood-prone areas in Metro Manila and neighbouring provinces. Last year, we donated a total of 1,058 school chairs in three high schools in Valenzuela, Rizal and Bulacan. This year, we extended our reach to cater schools in areas hit by Typhoon Haiyan. Three hundred chairs were donated to schools in Lawaan Eastern Samar while 1,200 chairs were donated to Philam Foundation's Philam Paaralan project in Iloilo, Cebu, Leyte, Samar and Tacloban.



## Community Engagement

Supporting social entrepreneurs

### Developmental Social Enterprise Awards



Together with the Benita and Catalino Yap Foundation (BCYF), our firm organised the Developmental Social Enterprise Awards, the first of its kind in the country. Through the awards, we aim to promote and recognise social enterprises that contribute to solve social challenges. Nomination is now open and awarding is on 10 December 2014. For more information, please visit [www.DSEAwards.com](http://www.DSEAwards.com)



### Sustainable Business Awards Philippines



Following the success of Sustainable Business Awards in Indonesia, this year, the Philippine version of SBA was launched in partnership with Global Initiatives, PwC Consulting Phils. and other non-government organisations. The awards aim to increase awareness of sustainable business best practices and demonstrate how sustainable business can benefit companies, the environment, the communities and all stakeholders, today and for the future.





## Spotlight

# Posters: Telling our stories

We produce campaign posters as part of communicating our CR initiatives. The materials also serve as a snapshot of what's currently happening in the firm.



## Acknowledgments

The partners, staff and alumni of Isla Lipana & Co./PwC Philippines

The PwC global network  
Isla Lipana Foundation, Inc.

Bacarra II Elementary School, Ilocos Norte

Balabag Day Care Center, Aklan

Baler Central Elementary School, Quezon

Binunsaran Elementary School, Camiguin

Department of Environment and Natural Resources - Siquijor

Department of Education

Department of Social Welfare and Development - Baler, Aurora

Guijalo Elementary School, Caramoan

Lions Club of Bohol

Municipality of Biri, Northern Samar

Municipality of Cauayan, Negros Occidental

Municipality of Dauin, Negros Oriental

Municipality of Lawaan, Eastern Samar

Municipality of Vinzons, Camarines Norte

Office of the Presidential Assistant for Recovery and Rehabilitation

Philippine Reef and Rainforest Conservation Foundation, Inc.

Philippine Tourism Promotion Board

PwC Bahamas

PwC Brazil

PwC Cayman Islands

PwC Central Cluster Corporate Responsibility Team

PwC Channel Islands

PwC China

PwC East Cluster Corporate Responsibility Team

PwC Global Corporate Responsibility Team

PwC Indonesia

PwC Isle of Man

PwC New Zealand

PwC Poland

PwC Switzerland

PwC United Arab Emirates

PwC United States

ReSA Review School, Inc.

Rotary Club of Makati San Antonio

Rotary Club of Parañaque

Rt. Hon. Lord Jack McConnell

Vigan Kalesa Association

Department of Agriculture - Oslob

# Corporate Responsibility contacts

**Alexander B. Cabrera**  
Chairman and Senior Partner  
[alex.cabrera@ph.pwc.com](mailto:alex.cabrera@ph.pwc.com)

**Gina S. Detera**  
CR Lead Partner  
Assurance  
[gina.detera@ph.pwc.com](mailto:gina.detera@ph.pwc.com)

**Allan M. Cao**  
CR Director  
Assurance/Markets  
[allan.m.cao@ph.pwc.com](mailto:allan.m.cao@ph.pwc.com)

**Edwin Padillo**  
CR Manager  
Markets  
[edwin.padillo@ph.pwc.com](mailto:edwin.padillo@ph.pwc.com)

**Dennis P. Bautista**  
Markets  
[dennis.p.bautista@ph.pwc.com](mailto:dennis.p.bautista@ph.pwc.com)

**Athenis Joy B. San Jose**  
Markets  
[athenis.joy.b.san.jose@ph.pwc.com](mailto:athenis.joy.b.san.jose@ph.pwc.com)

**Pam M. Gregorio**  
Human Capital  
[pam.m.gregorio@ph.pwc.com](mailto:pam.m.gregorio@ph.pwc.com)

**Maria Grace A. Aries**  
Independence  
[grace.aries@ph.pwc.com](mailto:grace.aries@ph.pwc.com)

**Ronald Anthony C. Melendres**  
Learning & Development  
[ronald.anthony.c.melendres@ph.pwc.com](mailto:ronald.anthony.c.melendres@ph.pwc.com)

**Chrissie G. Roque**  
Markets  
[elenore.g.roque@ph.pwc.com](mailto:elenore.g.roque@ph.pwc.com)

**Ampy C. Misagal**  
Finance  
[ampy.c.misagal@ph.pwc.com](mailto:ampy.c.misagal@ph.pwc.com)

**Myla B. Berones**  
Global Technology Solutions  
[myla.b.berones@ph.pwc.com](mailto:myla.b.berones@ph.pwc.com)

**Revelino R. Rabaja**  
Tax  
[revelino.r.rabaja@ph.pwc.com](mailto:revelino.r.rabaja@ph.pwc.com)

**Herbert C. Tuazon**  
Global Technology Solutions  
[herbert.c.tuazon@ph.pwc.com](mailto:herbert.c.tuazon@ph.pwc.com)

**Roel A. Briones**  
Finance  
[roel.a.briones@ph.pwc.com](mailto:roel.a.briones@ph.pwc.com)

**Bernadette G. Aucina**  
Assurance A  
[bernadette.g.aucina@ph.pwc.com](mailto:bernadette.g.aucina@ph.pwc.com)

**Genpros Loren C. Sanidad**  
Tax  
[genpros.loren.c.sanidad@ph.pwc.com](mailto:genpros.loren.c.sanidad@ph.pwc.com)

## [www.pwc.com/ph](http://www.pwc.com/ph)

© 2014 Isla Lipana & Co. All rights reserved.

Isla Lipana & Co. helps organisations and individuals create the value they're looking for. We're a member of the PwC network of firms in 157 countries with more than 184,000 people who are committed to delivering quality in assurance, tax and advisory services. Tell us what matters to you and find out more by visiting us at [www.pwc.com/ph](http://www.pwc.com/ph).