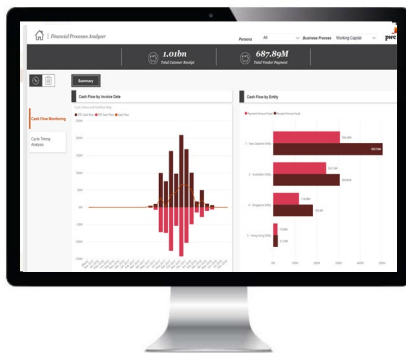


Financial processes analyser (FPA) Working capital

The large volume of transaction data, and the complex vendor-customer relationship create burdens for companies to manage working capital efficiently and effectively.

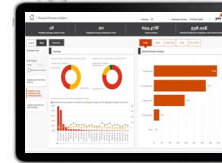
Adopting the Financial Processes Analyser (FPA) Working Capital module with either Purchase to Pay (P2P) or Order to Cash (O2C), businesses will be able to continuously monitor payables, receivables and cash level. Various tests have been built to enable businesses to identify the opportunity to improve their contract negotiation, cash management and bad debt governance.



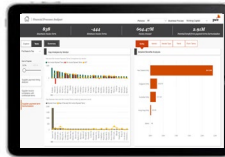
Sample dashboards



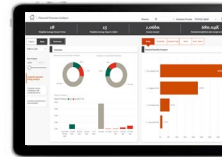
P2P – Supplier payment timing analysis with overview of payment timelines distribution.



P2P – Supplier invoice compliance with contractual terms with detailed benefits analysis.



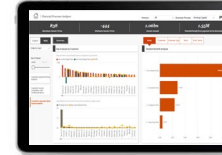
P2P – Supplier payment term harmonisation to help prioritise refining of invoice payment terms.



O2C – Customer payment timing analysis.



O2C – Customer invoice compliance with contractual terms.



O2C – Customer payment term harmonisation.

Sample prebuilt tests

- Supplier payment timing analysis
- Supplier invoice compliance with contractual terms
- Supplier payment term harmonization
- Customer payment timing analysis
- Customer invoice compliance with contractual terms
- Customer payment term harmonization
- Cash Flow Monitoring
- Cycle Timing Analysis