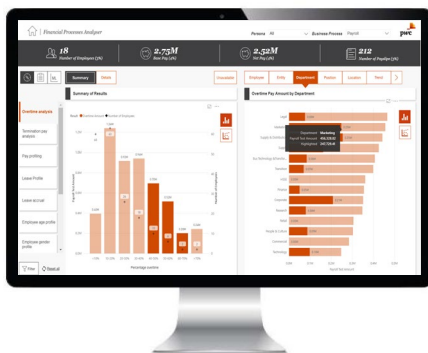


# Financial processes analyser (FPA) Payroll

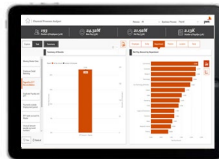
Gain greater visibility over the controls around your payroll system, make better informed business decisions and help identify and retain valuable staff with FPA Payroll.

By combining traditional rules based testing with advanced analytics and machine learning, FPA Payroll helps organisations uncover previously undiscovered insights and anomalies.

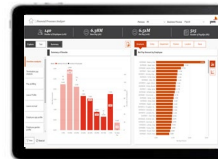
FPA Payroll enables 100% of payslip and payroll master data analysis and interrogation and with over 20 inbuilt tests and profiles, the FPA Payroll module is not only a robust exception reporting tool but also a powerful business intelligence (BI) platform enabling the user to drill into and identify root causes to exceptions.



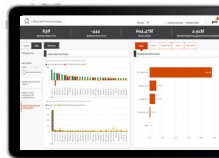
## Sample dashboards



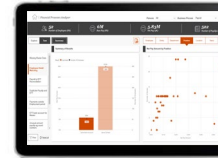
**Payslip to EFT reconciliation**  
Reconcile 100% of payslip transactions to EFT payments.



**Employee Well-being**  
Identify well-being issues through unusual leave patterns and excessive or abnormal overtime.

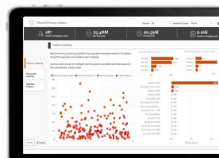


**Integrated database**  
Easily compare employee data across other FPA modules such as expense claims made whilst on leave.



**Internal Benchmarking**  
Benchmark employees internally across key indicators such as leave taken and overtime percentage.

## Advanced Analytics Powered by Machine Learning



- Clustering to identify abnormal patterns of overtime
- Demographic clustering to highlight different cohorts within the workforce
- Predict the likelihood that an employee may leave the company using predictive analytics

## Sample prebuilt tests and profiles

### Tests

- Missing employee master data
- Employee detail matching
- Payroll to electronic fund transfer (EFT) bank reconciliation
- Payments outside employment period
- Number payslips in period
- Leave paid vs leave requested
- Abnormal leave e.g. public holidays

### Profiles

- Overtime analysis
- Termination pay analysis
- Leave profile
- Leave accrual
- Employee age/gender/tenure profile
- Pension profiling
- Tax profiling
- Employee movement profile