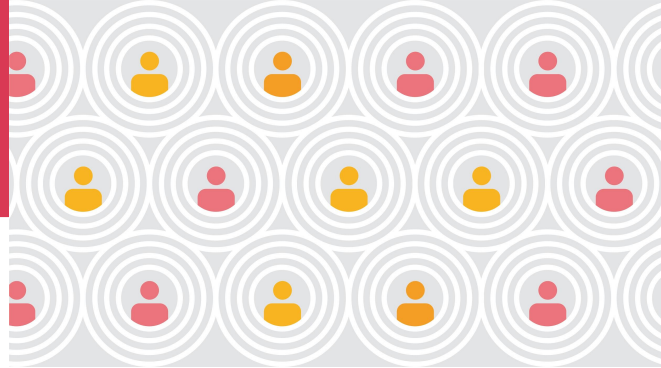


Discover where your talent  
could take you



[www.pwc.com/pg/careers](http://www.pwc.com/pg/careers)



## Human Capital Associate

PricewaterhouseCoopers (PwC), Papua New Guinea's leading professional services firm invites you to apply for the following opportunity based in Port Moresby.

We are currently seeking an experienced Human Capital Associate to join our team. As a Human Capital Associate you will be responsible for administrative human resources tasks, and as a part of the HC team, support the HC Manager with a variety of HC projects. This position provides an opportunity to further develop your human resource skills, in a fun and professional environment.

Candidate requirements for the role include:

- Strong administrative background, particularly in Work Permit and Visa Administration, and general Human Resources
- Minimum 3 years experience in a similar role
- Strong organisational skills and attention to detail
- Exceptional relationship building skills and a developed problem solving ability
- Grade 12 certificate, with tertiary education in Human Resource Management or similar.

This role is ideal for a team player who thrives on being busy, and enjoys working in a digital workspace.

PwC offers in return significant development and career opportunities as well as an environment that inspires you to be your best, providing you with a platform to work with some of the world's leading brands, create value for our clients and positively contribute to our community. We offer a competitive package and the work life balance you are looking for.

If this is the opportunity you have been looking for, please submit your CV together with your academic transcripts via the link to our online job board at [www.pwc.com/pg/careers](http://www.pwc.com/pg/careers), or to our email [pwc.pom@pg.pwc.com](mailto:pwc.pom@pg.pwc.com).

Alternatively, you can hand deliver to **PwC Haus, Level 6, Harbour City, Konedobu, Port Moresby**.

**Please note, only shortlisted candidates will be contacted.**