

Let's kickstart your  
career with purpose  
and impact

**Graduate Recruitment Program 2024**



# Join our community of solvers

328,000+

PwC people globally

152

Countries

119,512

PwC people in Asia Pacific

We're a passionate community of solvers coming together in unexpected ways. We work toward a future that is human-led and tech-powered.

This means that we bring together our innovative mindsets and the right technologies to transform the way we solve our clients' challenges.

Through this, we're able to deliver outcomes that continue to create value not just today, but also in the future.

We call this The New Equation.

Learn more about [The New Equation](#).





# Your potential, our community of solvers. Let's create an impact together.

## Why PwC Papua New Guinea?

We're proud to be the country's largest and leading professional services firm. We have been operating in PNG for 62 years and enjoy the largest market share. Our team of over 150 partners and staff are based in our offices in Port Moresby and Lae.

Our investments in the right technologies will enable you to effectively deliver value to our clients, and collaborate with colleagues from across our global network.

## Why launch your career with us?

At PwC, we're a passionate community of solvers working together to deliver on our purpose - to build trust in society and solve important problems.

We always look for new solutions to the challenges that our clients and communities face. That's why we value your potential, innovative mindset and passion. With our purpose and values, the opportunities that we offer, and our people, we will work hand in hand to realise your potential so we can create an impact together.

We are as committed to your professional career growth and development.







Your learning experience begins here.  
Let's put your skills to work in new and unexpected ways.

**What can I expect when I join as a graduate?**

When you join PwC, you open up opportunities to learn from a diverse team and use the latest technologies to create solutions for leading organisations in Papua New Guinea, including government. You'll get to work with our clients in the mining, oil and gas, banking, insurance, consumer and industrial products, telecommunications, power and utilities sectors, as well as international donor agencies.





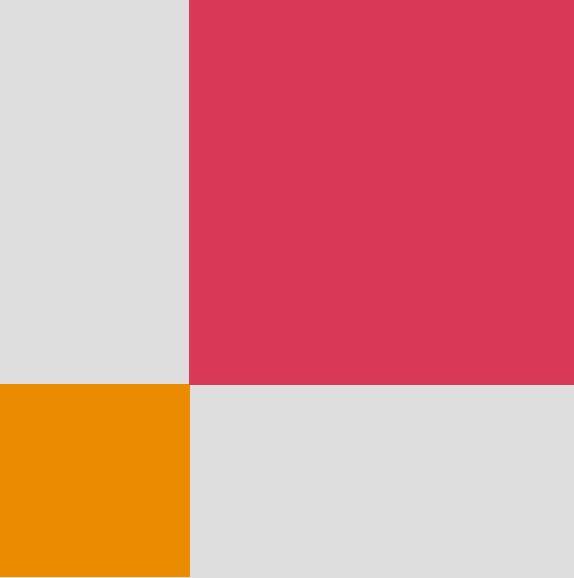
# Bring your unique skills and perspective to our diverse team

We believe that having a diverse team enables us to create new solutions to our clients' challenges. That's why we value different points of view and new ways of doing things.

We are proud of our diversity and work hard to ensure that we create an environment where our people can grow and develop regardless of their gender and background.


As part of our team, you will have the opportunity to work with and learn from our citizen and non-citizen talents. Your skills, passion and ability to reimagine the possible, coupled with our learning and development opportunities, will help drive your career at the firm.





# Where can you make a difference?

We have four lines of service offerings  
that you can join to be part of our  
community of solvers.







### Assurance

Assurance is the largest of our business areas. Its work includes assisting organisations to analyse aspects of their business, advising them on whether their financial accounts are true and fair, if they're meeting their regulatory responsibilities, and how they can improve their performance.

Being part of Assurance is more than just looking at numbers. To create value for the client, you need to understand every aspect of its business - its markets, technology, people and management, as well as its finances. And be tech-savvy because we use cloud-based audit technologies that allow us to focus on providing our clients with quality insights.

### Your future with us

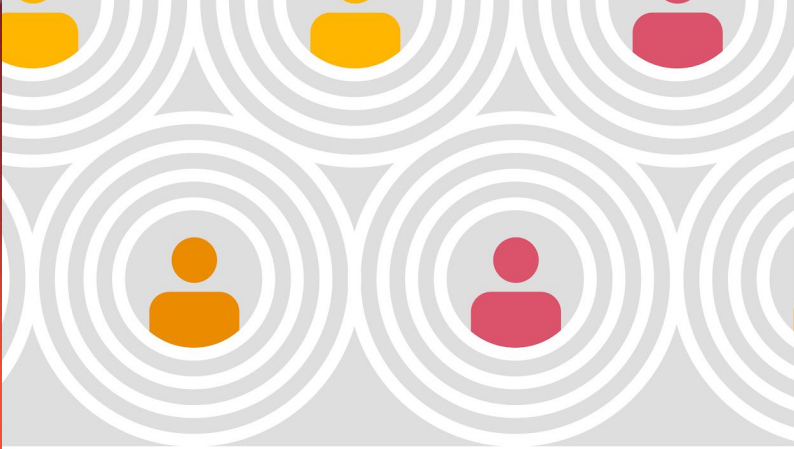
Joining our Assurance team means having the opportunity to create innovative solutions for some of PNG's biggest organisations and subsidiaries of global brands. Examples of impactful work that you could be part of include ensuring that organisations spend their budgets efficiently, and that financial institutions have the right controls in place to protect their data.



“

The exposure and learning I receive at PwC is phenomenal for my personal and professional growth.

**Joseph Hilarai**  
Graduate Associate, Assurance



### **Advisory**

Your ingenuity to create solutions in navigating complex situations such as major transactions, organisational change and strategy building will enable you to make a difference in our Advisory practice.

By learning through experience, you'll be able to build your skills so you can reimagine the possible in coming up with solutions to achieve our clients' desired outcomes. For instance, our team works with clients in the private and public sectors to enhance their operational resilience and performance through improved governance, risk decision making and talent management.

### **Your future with us**

Your innovative mindset and unique perspective are invaluable in helping our clients realise more value. Your on the job learning experience, together with our learning and development programs and the latest technologies, will equip you to make meaningful work and create real, lasting outcomes.

“

The learning tools offered here are unmatched and extremely helpful in assisting us to understand the work we do and how to do it.

**Louisa Kupe**  
Graduate Associate, Advisory





### Tax and Legal

As the leading tax advisor in PNG, we work with a broad range of clients from conglomerates and large multinationals, to emerging businesses, trusts and partnerships.

As a tax graduate, your skills, insights and experience will be valuable in helping clients meet their tax and statutory compliance obligations, prepare annual accounts, restructure their businesses and acquire businesses, among others.

Through our learning and development programs, you will be able to hone your knowledge and skills and work across a variety of practice areas.

### Your future with us

You'll have the opportunity to join teams across Corporate Tax, Indirect Taxes, Employment Taxes, and specialised tax roles. You can also grow your skills and create lasting outcomes for clients by providing advice on transactions and regulatory obligations, as well as assisting with cross-border arrangements.

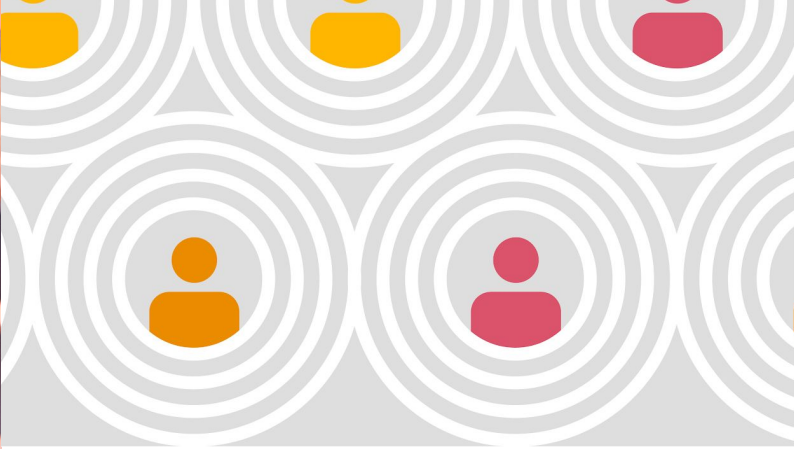
You'll have access to a range of cloud-based tax technologies and a dedicated tax training program designed to build your skillset and provide you the mentorship you need to be successful in the firm.



“

The skills, insights, knowledge and connections you develop at PwC are career defining...

**Luke Laurie**  
Graduate Associate, Tax and Legal



### **Entrepreneurial and Private Business (EPB)**

Understanding our clients' unique needs - both on a personal and business level - is crucial to our EPB team.

To make your mark to our clients, comprised of private and family businesses as well as high net worth individuals, you need to be able to help them solve problems in areas such as personal and business taxation, assurance, business funding and structuring, wealth management, succession planning, mentoring, deals, strategy, operations improvement, and emerging company services.

### **Your future with us**

As part of our EPB team, your work won't be focused on audits and tax advice. Instead, you'll use your skills and insights to provide a range of business advisory services to help our clients grow and protect their companies and family wealth. You'll bring innovative ideas and fresh thinking on challenges related to tax and how to make the leap overseas, for instance.

We'll provide you opportunities to understand our core service offerings, get hands on experience with active businesses, and learn about the different stages of a private business' life cycle. To fully empower you to launch your career and succeed, we'll give you the support you need to develop deep technical expertise, commercial acumen and relationship building skills.

“

... you learn something new everyday and you become exposed to different opportunities, as well as challenges...

**Lynette Bola**  
Graduate Associate, EPB





# About our Graduate Recruitment Program

## This year's career roadshows will be at the following locations:

- University of Technology, Lae
- Divine Word University, Madang
- University of PNG, Port Moresby
- Pacific Adventist University, Port Moresby
- Southern Cross University (IBS Campus), Port Moresby
- Virtual (online) - other Universities

## What are the key dates?

- Applications open: 27 February 2023
- Roadshows: 17 to 24 March 2023
- EOI Applications close: 21 April 2023
- Telephone interviews: March - May 2023
- Niu Opportunities assessment days: 13 - 20 June 2023
- Offers: End of June 2023

Visit our [website](#) for further information and updates.

## Our business areas

We value students from all degree disciplines across our business areas. Our recent graduates hold these degrees. You can decide which business area suits you based on your degree background

	Assurance	Advisory	Tax and Legal	Entrepreneurial and Private Business
Major	<ul style="list-style-type: none"><li>• Accounting</li><li>• Business Management</li><li>• Commerce</li><li>• Finance</li><li>• Information Technology</li></ul>	<ul style="list-style-type: none"><li>• Accounting</li><li>• Business Management</li><li>• Commerce</li><li>• Economics</li><li>• Information Technology</li></ul>	<ul style="list-style-type: none"><li>• Accounting</li><li>• Business Management</li><li>• Commerce</li><li>• Finance</li><li>• International Business Law</li><li>• Information Technology</li></ul>	<ul style="list-style-type: none"><li>• Accounting</li><li>• Business Management</li><li>• Commerce</li><li>• Information Technology</li></ul>



# What's in it for you?



Opportunity



Personal  
development



Travel



Great place to work



Benefits



Career  
not just a job



Impact to the  
community



Digital  
first environment

## Send us your application

### 1. Access the application form

Access the application form by visiting our [website](#).

### 1. Complete the application form

Complete the online application form, and combine the attachments below, ensuring that attachments are less than 1mb:

- a. Updated CV / resume
- b. Transcripts (most up to date)
- c. Relevant certificates (copies)
- d. Details of 3x Referees (names and contacts).

Please note that we will only ask for police clearance and covid 19 vaccination certificates when offers are made.

### 1. Submit your application

Submit your completed application with the required attachments.

We have a strong digital focus, and value building the digital capabilities of our people. So to be considered, please submit your application online through our Graduate Careers webpage.

**Applications close at 5pm on Friday, 21 April 2023.**





# Frequently asked questions

## Who is eligible?

We accept applications from candidates from a variety of business backgrounds. To become eligible, you will need to be:

- in your final year of study or have graduated last year
- a citizen of Papua New Guinea.

## What is the recruitment process?

1. Apply by completing our online 2024 Graduate Recruitment application form and attach it with your CV and all relevant documents required
2. There are two assessments during this process:
  - a. First round of telephone interviews
  - b. Niu Opportunities Assessment Day - You will complete a variety of assessments and attend face to face interviews.
3. Offer made.

## Is the graduate program rotational?

Most graduate positions are not rotational. You will work across the business area that you join on an ongoing basis, until you reach promotion and so on.

## I interviewed / applied last year and wasn't selected. Can I reapply?

Yes, you are welcome to reapply.

# Get in touch with us

## PricewaterhouseCoopers

PwC Haus, Level 6, Harbour City, Konedobu  
Port Moresby, Papua New Guinea

+675 305 3100

[pwc.com/pg/careers](https://pwc.com/pg/careers)

[pg\\_gradrecruitment@pwc.com](mailto:pg_gradrecruitment@pwc.com)

## Human Capital Team

**Shirleyanne Fauma**

Human Capital Manager

**Antoinette Rumet**

Human Capital Associate

**Tiata Kulla**

Human Capital Associate

**Maria Liu**

Human Capital Associate

© 2023 PricewaterhouseCoopers. All rights reserved.

PwC refers to the Papua New Guinea member firm, and may sometimes refer to the PwC network.  
Each member firm is a separate legal entity. Please see [www.pwc.com/structure](https://www.pwc.com/structure) for further details.