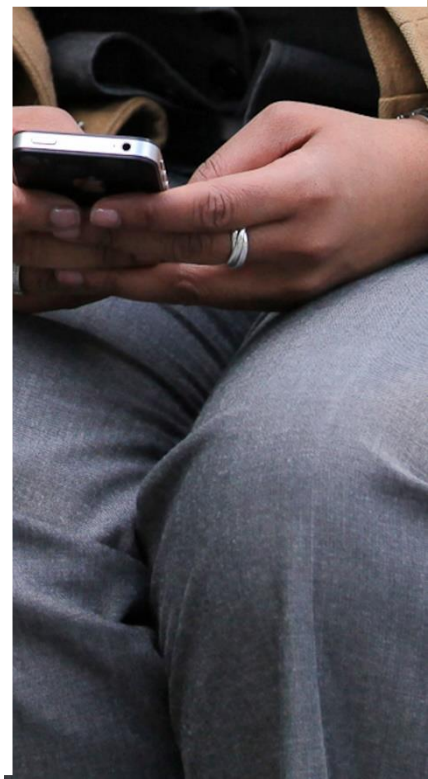


PwC Business School

PwC Data & Analytics Academy Curriculum

www.pwc.com/ng



Introduction

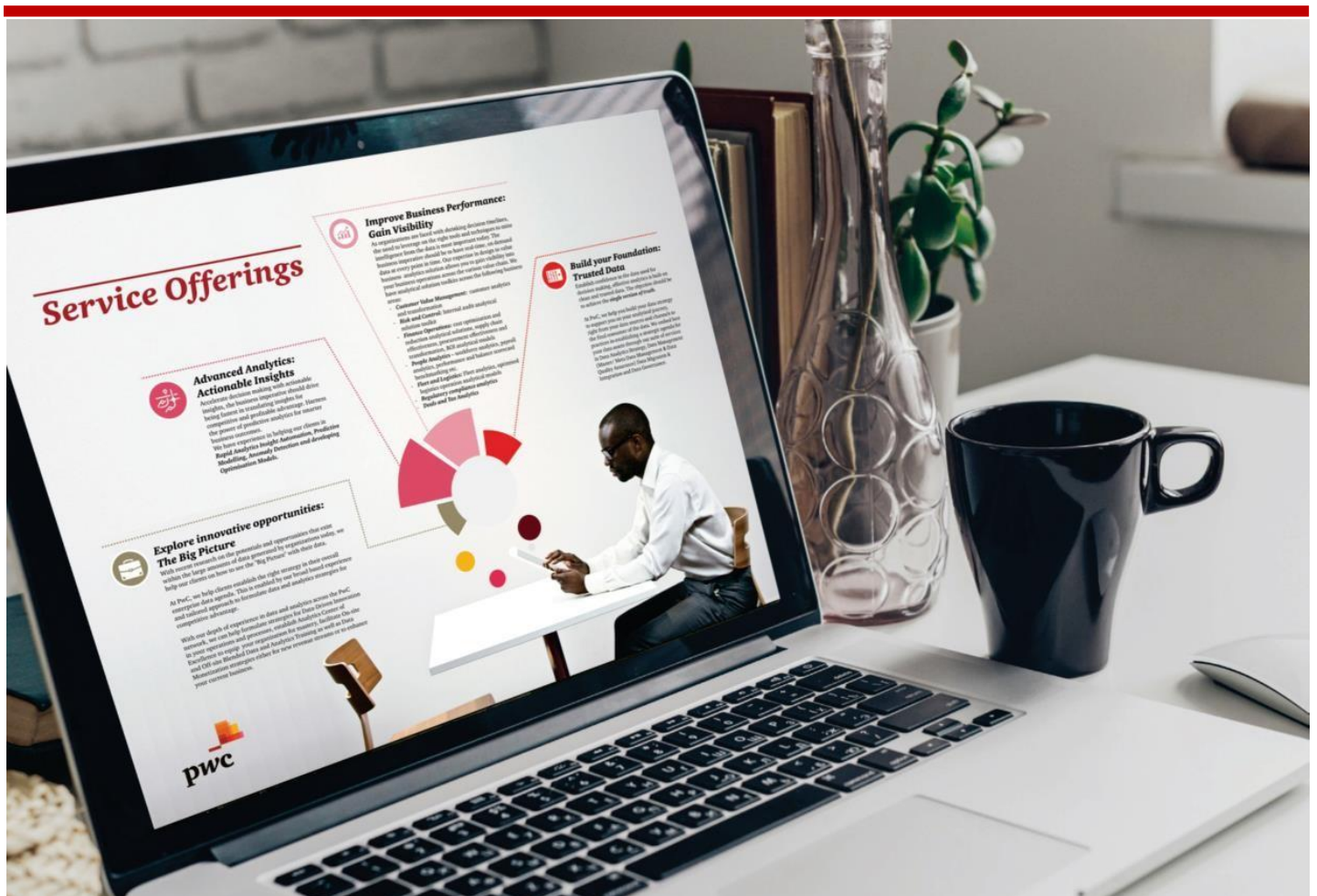
PwC's Data Analytics Academy provides a range of big data training designed to help organizations enable new and existing internal resources to make the most of key data science tools and platforms.

Data Science courses are designed to deliver the basic requirement for any data scientist and big data analysts to make business impact. The courses cover core data science programming tools and applications to entrench the necessary background knowledge.

The training sessions are delivered in comfortable conference room at direct serene locations across the country and around the world. Training course participants should be reasonably proficient in Excel and are also required to bring their own machines (laptops) and install the necessary tools in advance of any of the courses.

PwC D&A Academy programs offer:

1. Hands-on, in-person training.
2. Printed training material.
3. Morning Snacks, Lunch, Afternoon Snacks and Refreshments.
4. Guaranteed small class size. The programs are confirmed with a minimum of ten (10) participants and sealed at a maximum of twenty (20) participants. With such small class sizes there will be plenty of time to ask questions and receive personal attention from the faculties.
5. A highly consultative engagement. There will be plenty of time to discuss your specific projects and learning objective to provide immediate return on investments upon completion of any of the programs.



Data Science for Business Professionals

01

Course Overview

In this complex, digital world, clients want help to understand their data to drive greater insight, improved performance and competitiveness. The course will introduce participants to the important techniques and methods to become more efficient in delivering their daily objectives and also improve their work ethics.

PwC's Data & Analytics Academy course for business professionals is designed for:

- Graduate Trainees
- Data Analysts
- Business Analysts
- Professionals looking to change career path

Course Modules

Module 1	Data Science for Business Professionals (Beginners) - DSBP I <ul style="list-style-type: none">• General introduction to PowerBI• Connecting to multiple data sources• Core data visualization concepts• Introduction to DAX and use of measures.	Pre-requisites N/A	Date June 29 - July 1 August 3 - August 5 October 5 - October 7 November 30 - Dec. 2
		Fee N100,000	
		Duration 3 days	Time 10am - 2pm daily
Module 2	Data Science for Business Professionals (Intermediate) - DSBP II <ul style="list-style-type: none">• Data modelling and preparation• Advanced DAX	Pre-requisites DSBP I	Date July 6 - July 7 August 31 - September 2 Nov. 2 - Nov. 3
		Fee N100,000	
		Duration 2 days	Time 10am - 2pm daily
Module 3	Data Science for Business Professionals (Advanced) - DSBP III <ul style="list-style-type: none">• R• Python scripting in PowerBI• Advanced DAX	Pre-requisites DSBP I & II	Date August 5 - August 7 Sept. 7 – Sept. 9 October 7 - October 9 Dec. 2 - Dec. 4
		Fee N100,000	
		Duration 3 days	Time 10am - 2pm daily



Data Science for Beginners

02

Course Overview

In this complex, digital world, clients want help to understand their data to drive greater insight, improved performance and competitiveness. The course will introduce participants to the important techniques and methods used by data scientists.

PwC's Data & Analytics Academy course for beginners is designed for:

- Graduate Trainees
- Data Analysts
- Business Analysts
- Professionals looking to change career path

Course Modules

Module 1	Data Science for Beginners - DSB I <ul style="list-style-type: none">• Introduction to R/Python• Introduction to model building and Regression analysis	Pre-requisites	Date
		DSBP I & III	July 6 - July 8 August 17 - August 19 October 19 - October 21 Dec. 14 - Dec. 16
		Fee	
		N100,000	
Module 2	Data Science for Beginners - DSB II <ul style="list-style-type: none">• Introduction to Statistical Inference• Intermediate regression analysis• managing features/feature engineering	Duration	Time
		3 days	10am - 2pm daily
		Pre-requisites	Date
		DSB I	July 20 - July 21 Sept. 14 - Sept. 15 Nov. 14 - Nov. 15
Module 3	Data Science for Beginners - DSB III <ul style="list-style-type: none">• Advanced regression analysis• Introduction to Time Series Analysis• Visualization of Model results using PowerBI	Fee	Time
		N100,000	10am - 2pm daily
		Duration	Date
		2 days	July 13 - July 15 August 19 - August 21 October 21 - October 23 Nov. 25 - Nov. 27 Dec. 16 - Dec. 18
Module 3	Data Science for Beginners - DSB III <ul style="list-style-type: none">• Advanced regression analysis• Introduction to Time Series Analysis• Visualization of Model results using PowerBI	Pre-requisites	Date
		DSB I & II	July 13 - July 15 August 19 - August 21 October 21 - October 23 Nov. 25 - Nov. 27 Dec. 16 - Dec. 18
		Fee	Time
		N100,000	10am - 2pm daily
Module 3	Data Science for Beginners - DSB III <ul style="list-style-type: none">• Advanced regression analysis• Introduction to Time Series Analysis• Visualization of Model results using PowerBI	Duration	Date
		3 days	July 13 - July 15 August 19 - August 21 October 21 - October 23 Nov. 25 - Nov. 27 Dec. 16 - Dec. 18
		Pre-requisites	Time
		DSB I & II	10am - 2pm daily



Data Science for Intermediate

03

Course Overview

Becoming a senior data scientist takes more than the understanding of basic skills like statistics and programming in various languages. The need to develop one area of technical analytic expertise (e.g. machine learning), while being conversant in many others is very critical. This is the major objective of this course.

By the end of this intermediate data science course, you'll be ready to:

- Build data solutions that integrate with other systems.
- Implement advanced data science concepts like machine learning and inferential statistics to address critical business problems and influence corporate decision making.
- Participate successfully in data science competitions.

Course Modules

Module 1	Data Science for Intermediate - DSI I <ul style="list-style-type: none">• Advanced Regression Analysis• Decision Tree• Cluster Analysis with practical use cases	Pre-requisites	Date
		DSB I, II, III	July 29 - July 30 Sept. 21 - Sept. 22 Dec. 7 - Dec. 8
		Fee	
		N100,000	
Module 2	Data Science for Intermediate - DSI II <ul style="list-style-type: none">• Time Series Analysis• Principal Component Analysis• Anomaly Detection• Random Forest	Duration	Time
		2 days	10am - 2pm daily
		Pre-requisites	Date
		DSI I	August 10 - August 11 Sept. 28 - Sept. 29 Nov. 5 - Nov. 6 Dec. 10 - Dec. 11
Module 3	Data Science for Intermediate - DSI III <ul style="list-style-type: none">• Text Mining• Naïve Bayes• Support Vector Machine• Parallel Computing in R	Fee	Time
		N100,000	10am - 2pm daily
		Duration	Date
		2 days	August 13 - August 14 October 1 - October 2 Nov. 9 - Nov. 10



Data Science for HR Professionals

04

Course Overview

Analyzing HR data to gain insights on workforce, policies and practices can ultimately inform more evidence-based decision making. This course delivers the basic requirements for HR professionals and aspiring HR analysts to make business impact in three days. It covers the core concepts of analytics and reporting with introduction to the use of a visualization tool (PowerBi) to entrench the necessary background Knowledge.

PwC's Data & Analytics Academy course for HR professionals is designed for:

- Human Resource Professionals & Consultants
- HR Analysts

Course Modules

Module 1	Data Science for HR Professionals I <ul style="list-style-type: none">• Introduction to HR Analytics• Introduction to Data Analysis and working with HR data• Data Cleaning and HR Metrics• Data Analysis with HR data• Introduction to Visualization	Pre-requisites N/A	Date June 29 - June 30 August 11 – August 12 October 5 - October 6 Nov. 30 - December 1
		Fee N80,000	
		Duration 2 days	Time 10am - 2pm daily
Module 2	Data Science for HR Professionals II <ul style="list-style-type: none">• Data Visualization and Reporting using HR Data	Pre-requisites DSHRP I	Date July 6 - July 7 August 17 - August 18 October 19 - October 20 Dec. 14 - Dec. 15
		Fee N80,000	
		Duration 2 days	Time 10am - 2pm daily
Module 3	Intermediate HR Analytics - DSHRP II <ul style="list-style-type: none">• Building advanced analytics models for HR: Identifying drivers of employee engagement and other employee performance drivers	Pre-requisites DSB I and DSHRP I	Date July 28 - July 30 Sept. 21 - Sept. 23 Dec. 6 - Dec. 8
		Fee N100,000	
		Duration 3 days	Time 10am - 2pm daily
Module 4	Advanced HR Analytics - DSHRP III <ul style="list-style-type: none">• Building predictive models for HR:• Identify drivers of employee attrition• Predict employee attrition• Identify the optimal recruitment channels, etc	Pre-requisites DSHRP II	Date August 13 - August 15 October 1 - October 3 Nov. 9 - Nov. 11
		Fee N100,000	
		Duration 3 days	Time 10am - 2pm daily

Data Science for Public Sector

05

Course Overview

The public sector makes numerous decisions daily. However, the public sector has not fully taken advantage of the prospects and beauty of analytics. This course will empower decision makers in the public sector on how to make reports, analyze data and make evidence-based decisions.

PwC's Data & Analytics Academy course for public sector is designed for:

- Data Analysts
- Public Sector Staff / Personnel
- Decision makers in the Public Sector

Course Modules

Module 1	Data Science for Public Sector Beginners - DSP I <ul style="list-style-type: none">• General introduction to Data Science and its applications in Public Sector• General introduction to PowerBI• Connecting to multiple data sources• Core data visualization concepts	Pre-requisites N/A	Date July 6 - July 8 August 17 - August 19 October 19 - October 21 Dec. 14 - Dec. 16
		Fee N100,000	
		Duration 3 days	Time 10am - 2pm daily
Module 2	Data Science for Public Sector Intermediate - DSP II <ul style="list-style-type: none">• Data modelling and preparation• Advanced DAX	Pre-requisites DSP I	Date July 20 - July 21 Sept. 14 - Sept. 15 Nov. 16 - Nov. 17
		Fee N100,000	
		Duration 2 days	Time 10am - 2pm daily
Module 3	Data Science for Public Sector Advanced - DSP III <ul style="list-style-type: none">• R• Python scripting in PowerBI• Advanced DAX	Pre-requisites DSP I & II	Date July 13 - July 15 August 19 - August 21 October 21 - October 23 Nov. 25 - Nov. 27 Dec. 16 - Dec. 18
		Fee N100,000	
		Duration 3 days	Time 10am - 2pm daily



Contacts



Femi Osinubi

Partner & Leader
Data and Analytics, PwC West Africa
+234 813 058 8959
femi.osinubi@pwc.com



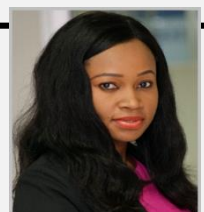
Raphael Yemitan, Ph.D

Senior Manager
Data and Analytics, PwC West Africa
+234 803 200 3058
raphael.yemitan@pwc.com



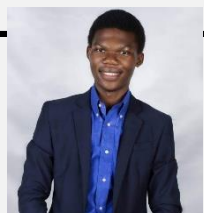
Pelumi Oguntunde, Ph.D

Manager
Data and Analytics, PwC West Africa
+234 806 036 9637
pelumi.oguntunde@pwc.com



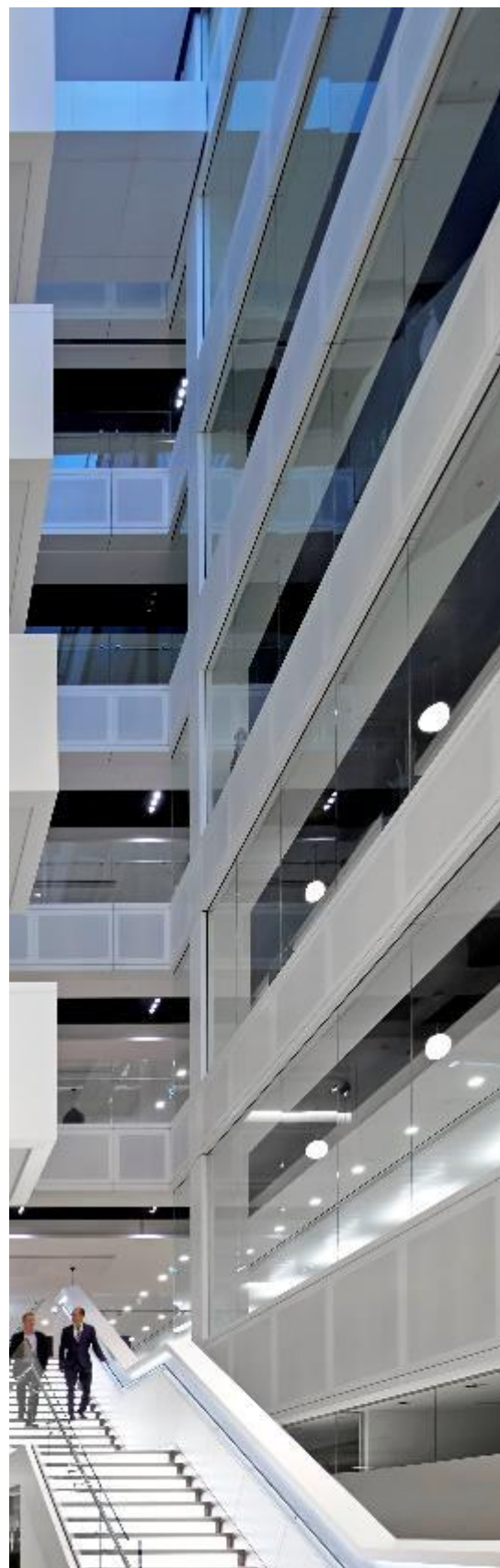
Maritha Agwu, ACIPM

Senior Associate
Data and Analytics, PwC West Africa
+234 803 598 9508
Maritha.agwu@pwc.com



David Alade

Associate
Data and Analytics, PwC West Africa
+234 703 722 5469
David.alade@pwc.com



PwC Nigeria offices

Lagos

Head Office
Landmark Towers
5B Water Corporation Road
Victoria Island
P.O.Box 2419
Lagos, Nigeria
T: +234 1 271 1700
F: +234 1 270 3108

Abuja

Second Floor, Muktar El-Yakub's Place
Plot 1129 Zakariya Maimalari Street
Opposite National Defence College
(War College)
Central Business District, Abuja
T: +234 9 291 9301 - 4, 291 4588
F: +234 9 461 3747

Annexe

17 Chief Yesufu Abiodun Way
Oniru Estate
Victoria Island, Lagos
T: +234 1 271 1700
F: +234 1 270 3108

Port-Harcourt

35 Woji Road
GRA Phase II
Port-Harcourt, Rivers
T: +234 84 571 513
F: +234 84 237 959

You can reach us directly via

dataanalytics.academy@ng.pwc.com



About PwC

At PwC, our purpose is to build trust in society and solve important problems. We're a network of firms in 157 countries with more than 276,000 people who are committed to delivering quality in assurance, advisory and tax services. Find out more by visiting us at www.pwc.com/ng

© 2019 PricewaterhouseCoopers Nigeria. All rights reserved. In this document, "PwC" refers to the Nigeria member firm, and may sometimes refer to the PwC network. Each member firm is a separate legal entity. Please see www.pwc.com/structure for further details.