

The New Equation



Tuesday 27 February 5pm GST

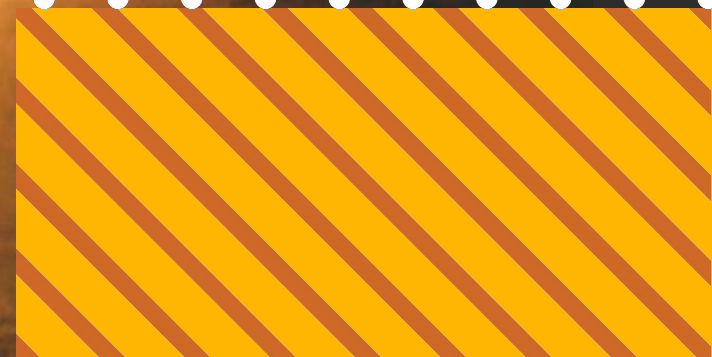
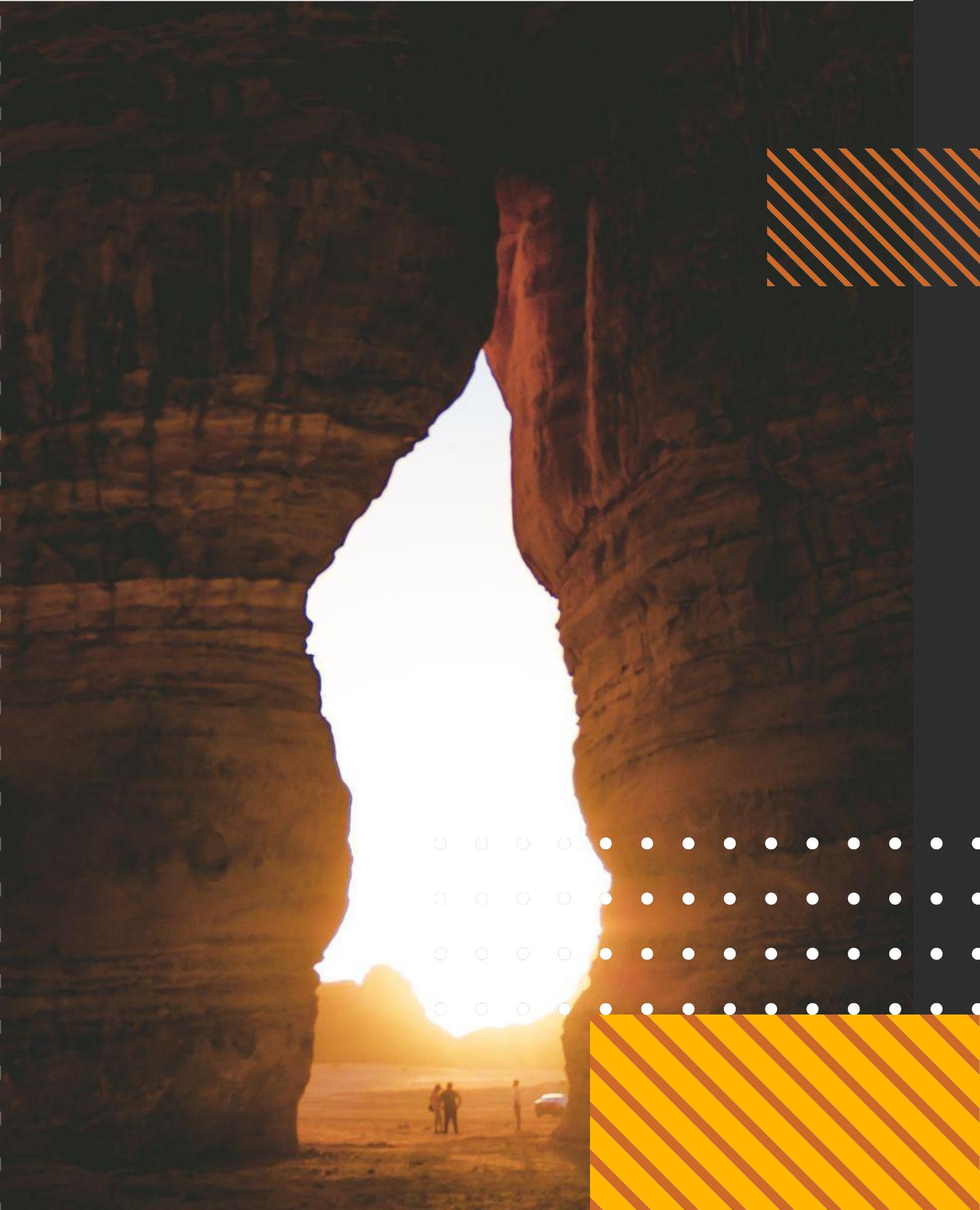
# Transforming our Region

Welcome

# Stephen Anderson

Strategy Leader  
PwC Middle East

01



**Welcome**

**Stephen Anderson**

Strategy Leader  
PwC Middle East

**Economic Updates**

**Richard Boxshall**

Chief Economist  
PwC Middle East

**HealthCare**

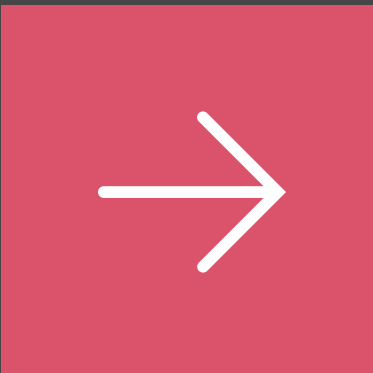
**Dr Hinda Daggag**

Healthcare Advisory  
PwC Middle East

**Future of Crime**

**Rajat Chowdhary**

Technology Consulting  
PwC Middle East



# Economic Update

Richard Boxshall

Chief Economist  
PwC Middle East

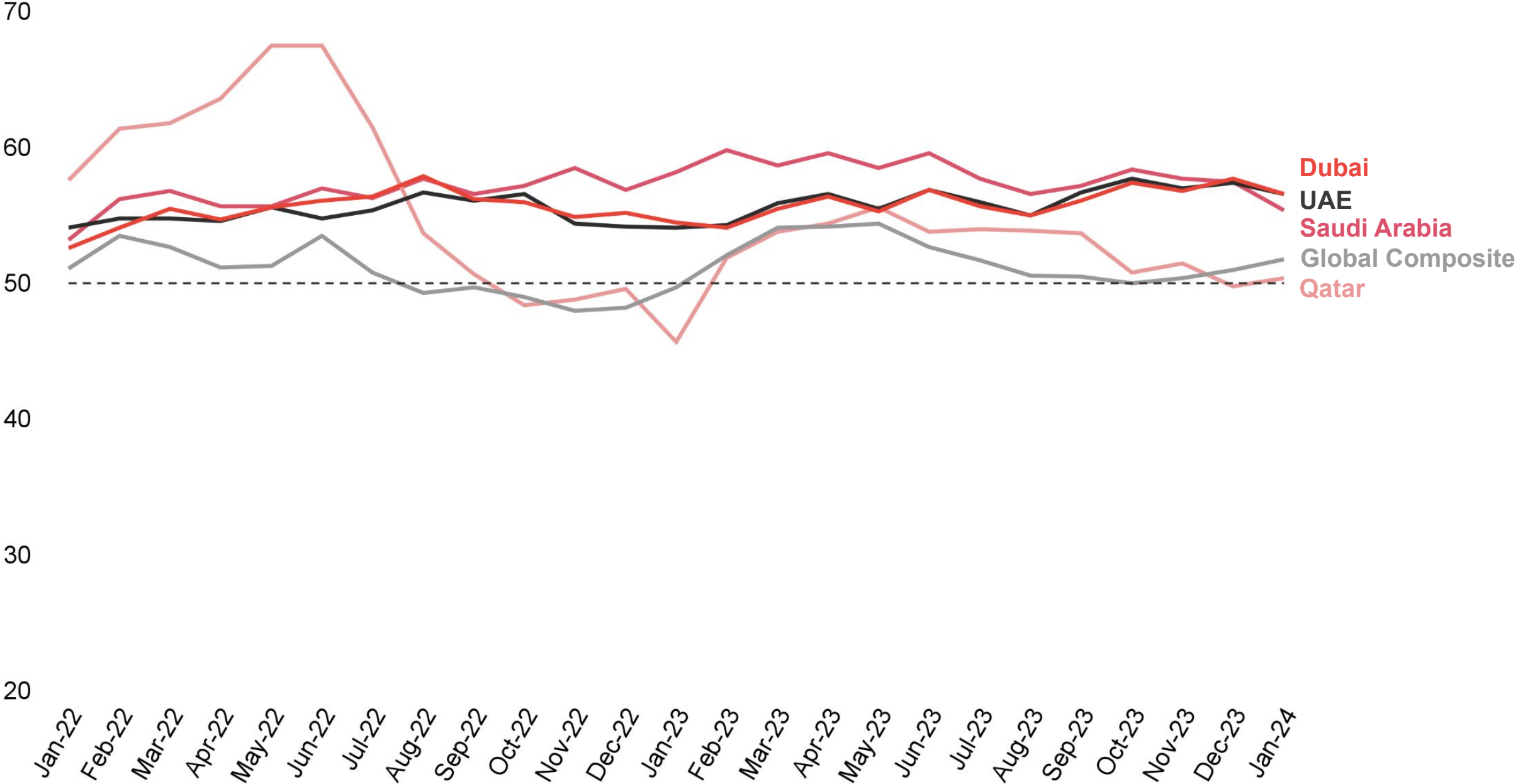
02



# Economic Update

Strong PMI data in GCC states points towards the relative health and momentum of the regional economies

## Purchasing Managers' Index for January 2022 to January 2024



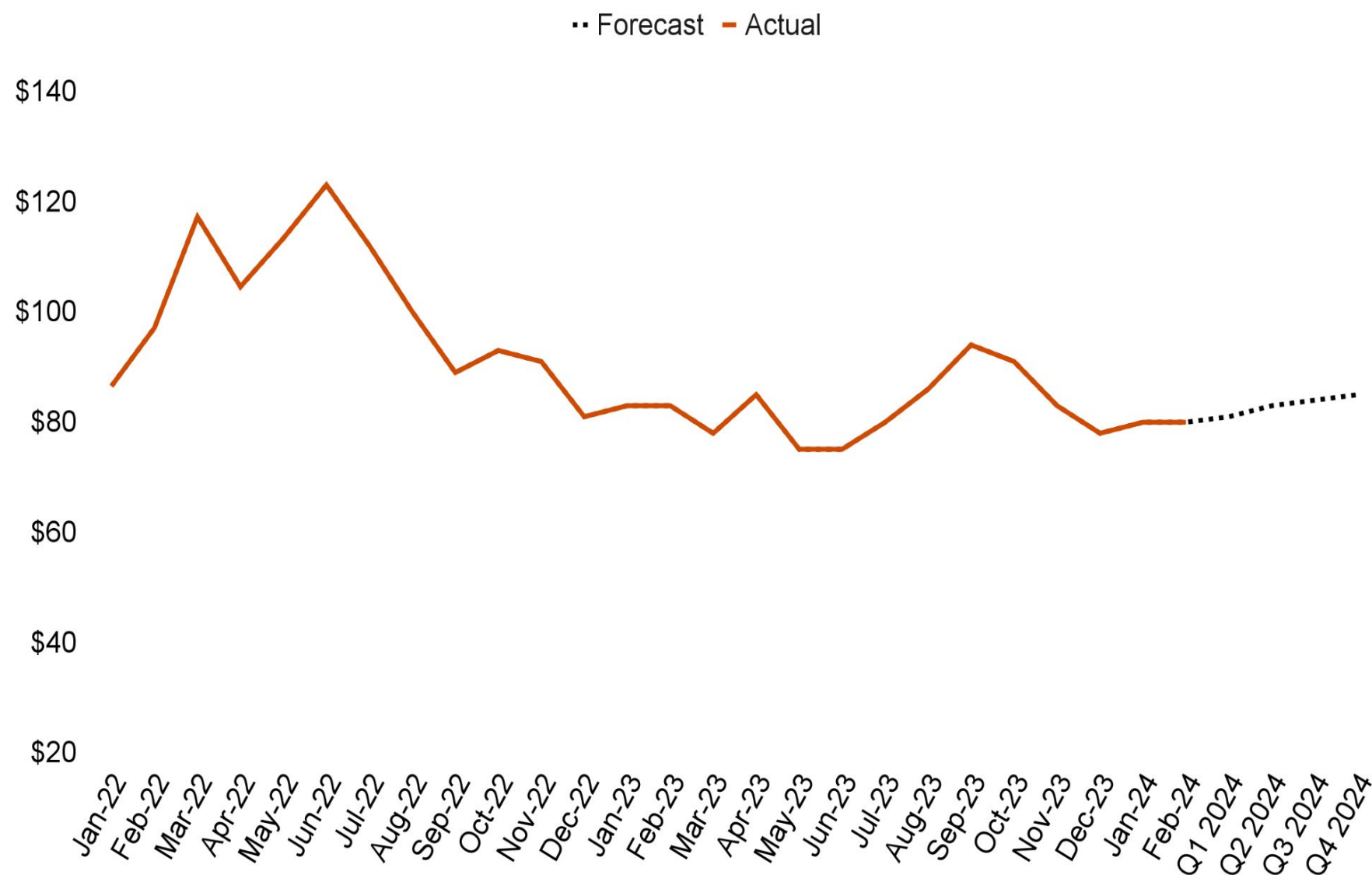
- Business activity in Saudi Arabia and the UAE continued to expand in January, albeit at a slower pace
- KSA's PMI was at its lowest level in two years

Source: S&P Global Purchasing Managers' Index

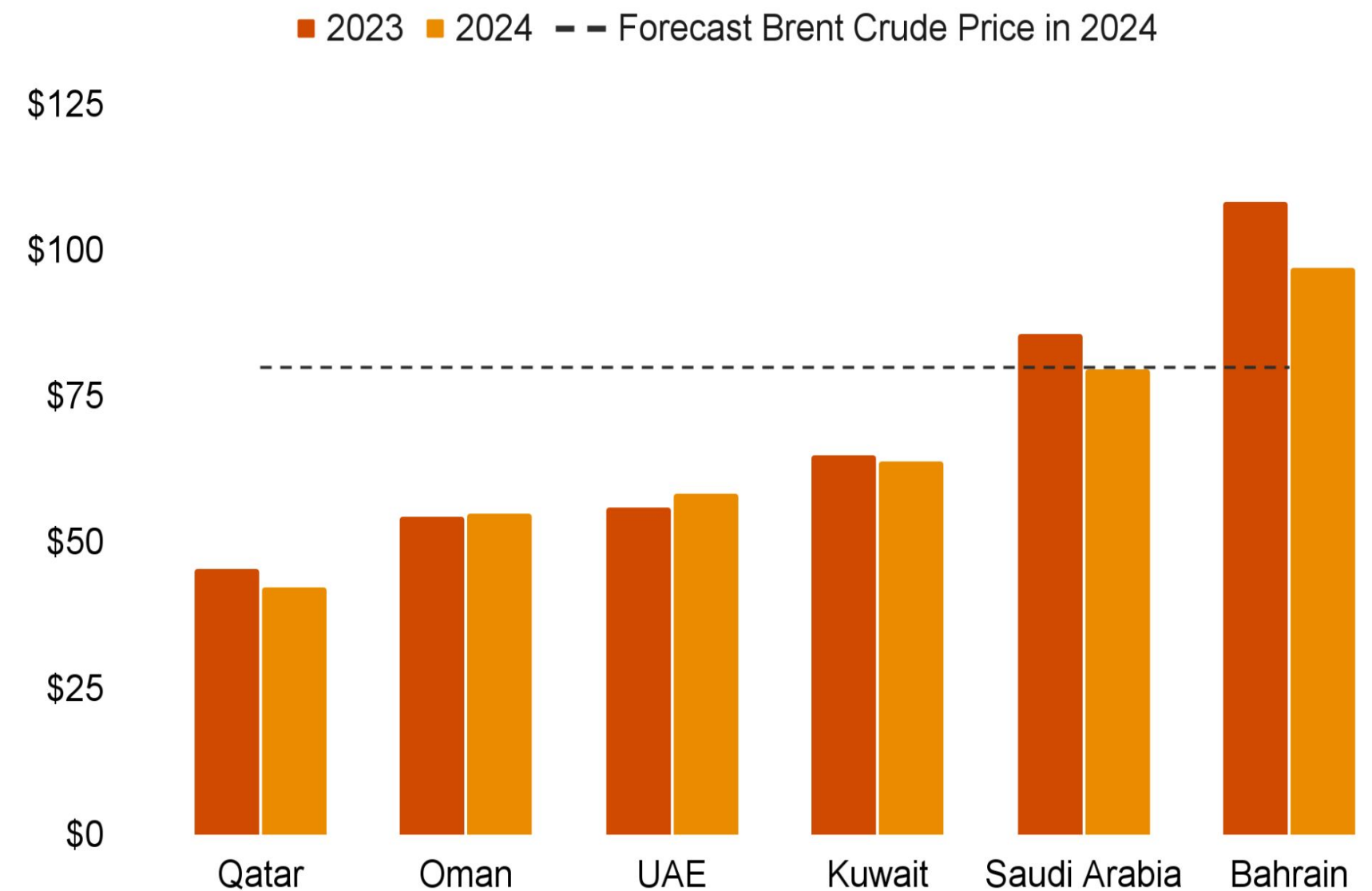
# Economic Update

Although Brent crude prices are unlikely to reach the highs of late 2021 and early 2022, they are expected to remain above US\$80/barrel in 2024

## Brent Crude oil spot prices (US\$/barrel)



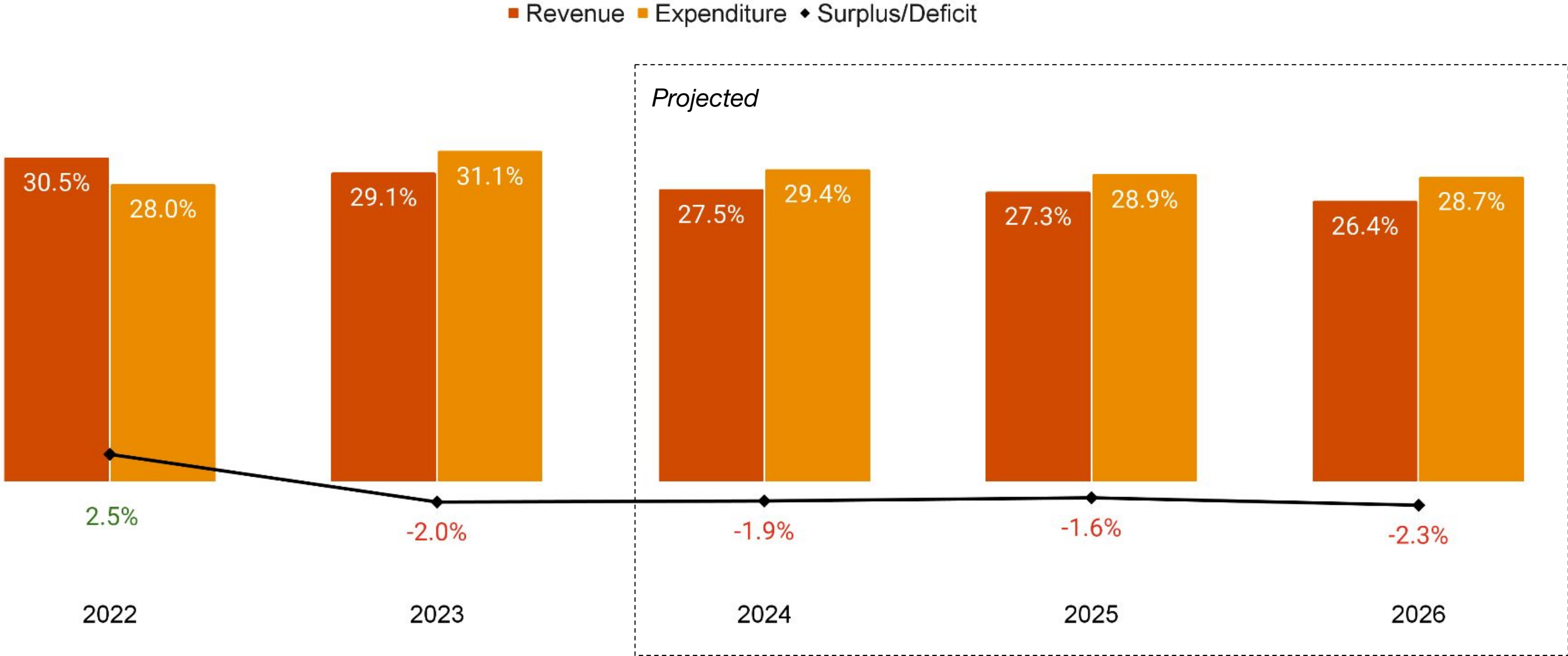
## Fiscal Breakeven Oil Prices for GCC states (US\$/barrel)



# Economic Update

Saudi Arabia expects fiscal deficits averaging -1.9% of GDP in 2024-26

## KSA's fiscal position as a % of GDP



Source: KSA Ministry of Finance Quarterly Budget Performance Report Q4 FY 2023, KSA Ministry of Finance Budget Statement for FY 2024.

# Health Care

## Dr Hinda Daggag

Healthcare Advisory  
PwC Middle East

03



# Current state of healthcare: top challenges impacting the global healthcare system today

## Rising Healthcare Costs

Benefit costs rose from **8.2%** in 2021 to **8.8%** in 2023

## Ageing Population

Persons over age **65** are the fastest-growing age group. Older adults require more healthcare services and treatments for **chronic conditions**, leading to higher demand for healthcare resources

## Healthcare Workforce Shortage

**Scarcity** can lead to increased workloads, longer wait times and reduced access to care

## Global Population Increase

The current world population of 8 billion is expected to reach **8.5 billion** in 2030, **9.7 billion** in 2050 and **10.4 billion** in 2100

## Increased Life Expectancy

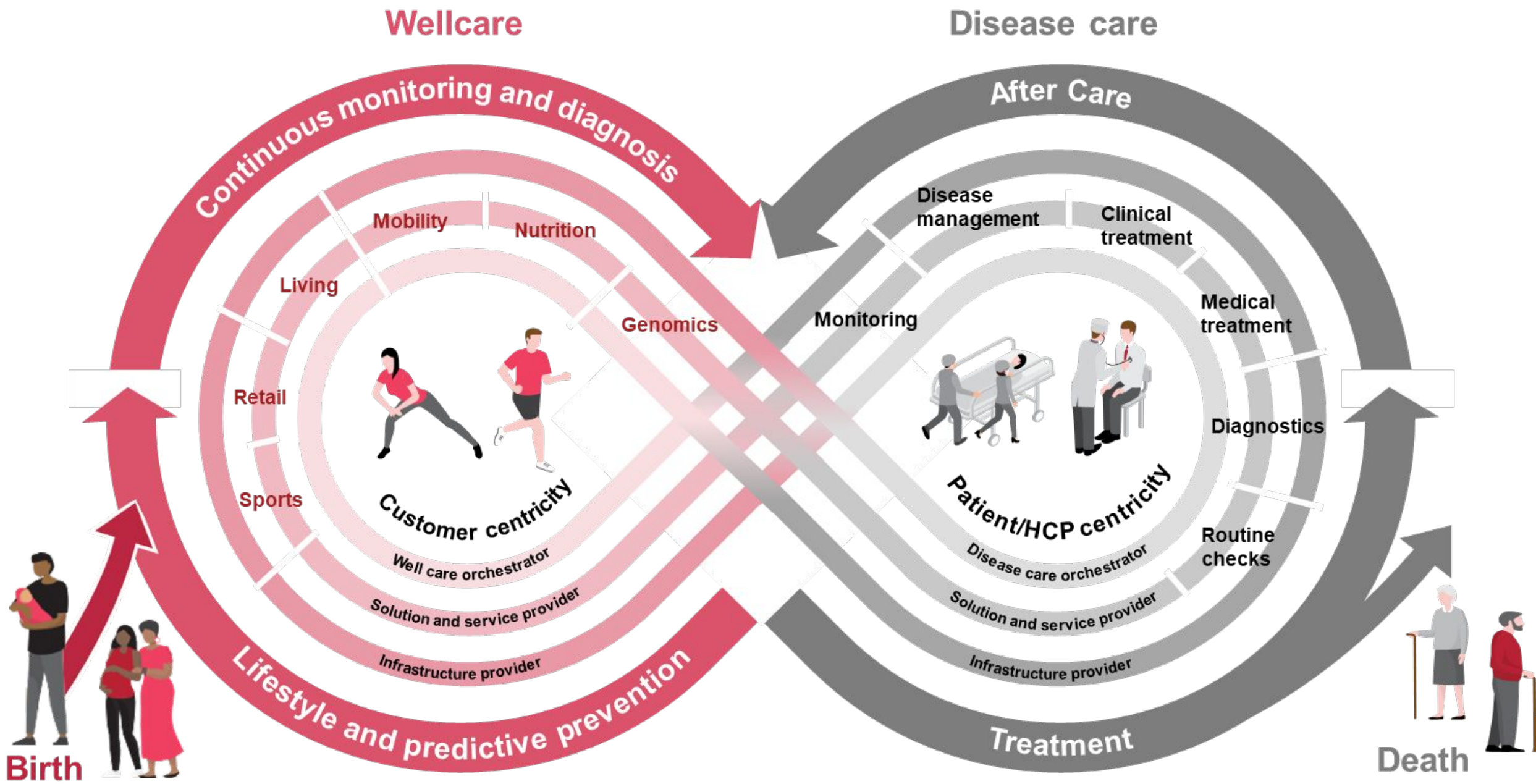
Life expectancy at birth is increasing globally, it reached 71 years in 2021 and will expect to be significantly higher by 2050.

## Chronic Diseases Epidemic

Life expectancy has been globally increasing in recent years, and has not been met by a proportionate increase in healthy life expectancy. Prevalence of diseases such as diabetes, heart disease and obesity is on the rise. ~41 Mn deaths each year (74% of deaths globally) are due to NCDs & ~43% of those are due to CVD

As a result, health systems have taken to focusing not only on treatment but also on prevention of health conditions and optimisation of health

The LIFEcare system:



by 2035 healthcare will be **centered around human needs**, and will be **personalised, digitised and preventative**.

**convergence** between current disease care systems, **focused on treatment**, and wellcare systems, **focused on prevention and wellbeing**, in what has been coined as the **LIFEcare system**.

more than **75% of healthcare executives** agree that **LIFEcare systems will be widespread** by 2035

More **holistic approach** to healthcare

More **active role for patients** in their treatment pathways

Decision-making will **incorporate multi-omics and lifestyle data**.

Source: Future of Health - How to transform BioPharma for the upcoming LIFEcare system

# Longevity and Ageing Populations in the GCC

As global life expectancy continues to rise, partly due to advances in medical technology and partly due to improvements in living standards, the concept of longevity is more significant than ever before. While this phenomenon can be celebrated as an indication of improved living conditions, it presents unique challenges for the society and healthcare systems.

This report identifies the main challenges confronting GCC governments as they seek to mitigate the costs of an ageing population by creating the conditions where citizens can hope to enjoy healthy, fulfilled lives, and examines the opportunities to lead scientific discoveries and implement disruptive healthcare approaches leading to healthy ageing and longevity.



## Advances in Regenerative Medicine (RM) and Gene Therapy

Governments, healthcare providers and medical professionals cannot afford to ignore the latest developments in RM and gene therapy, because they are one of the most promising pathways to ensuring better life-long health and quality of life for all citizens. Catalysed by spiraling healthcare costs worldwide, and aided by rapid advances in digital health and technology, Governments must adopt these innovative, tech-driven approaches to ensure their healthcare systems are fit for the future.



# Health ecosystem pillars crucial for delivery of the genomics, precision medicine and longevity agenda in the UAE

## Overview of the UAE Healthcare Landscape

### Government Entities

Shape the regulatory environment and drive the overall growth agenda

### Research & Academia

Bolster local talent and drive research and development activities

### Investors

Provide investment support to boost the healthcare life science industry

### Commercial

Drive the translation of genomic discoveries into innovative pharmaceuticals, diagnostics, and therapeutic solutions

### Laboratories

Collect, store, and analyze samples

### Healthcare Providers

Translate healthcare life science advancements into clinical practice and support genomic data collection



# Future of Crime

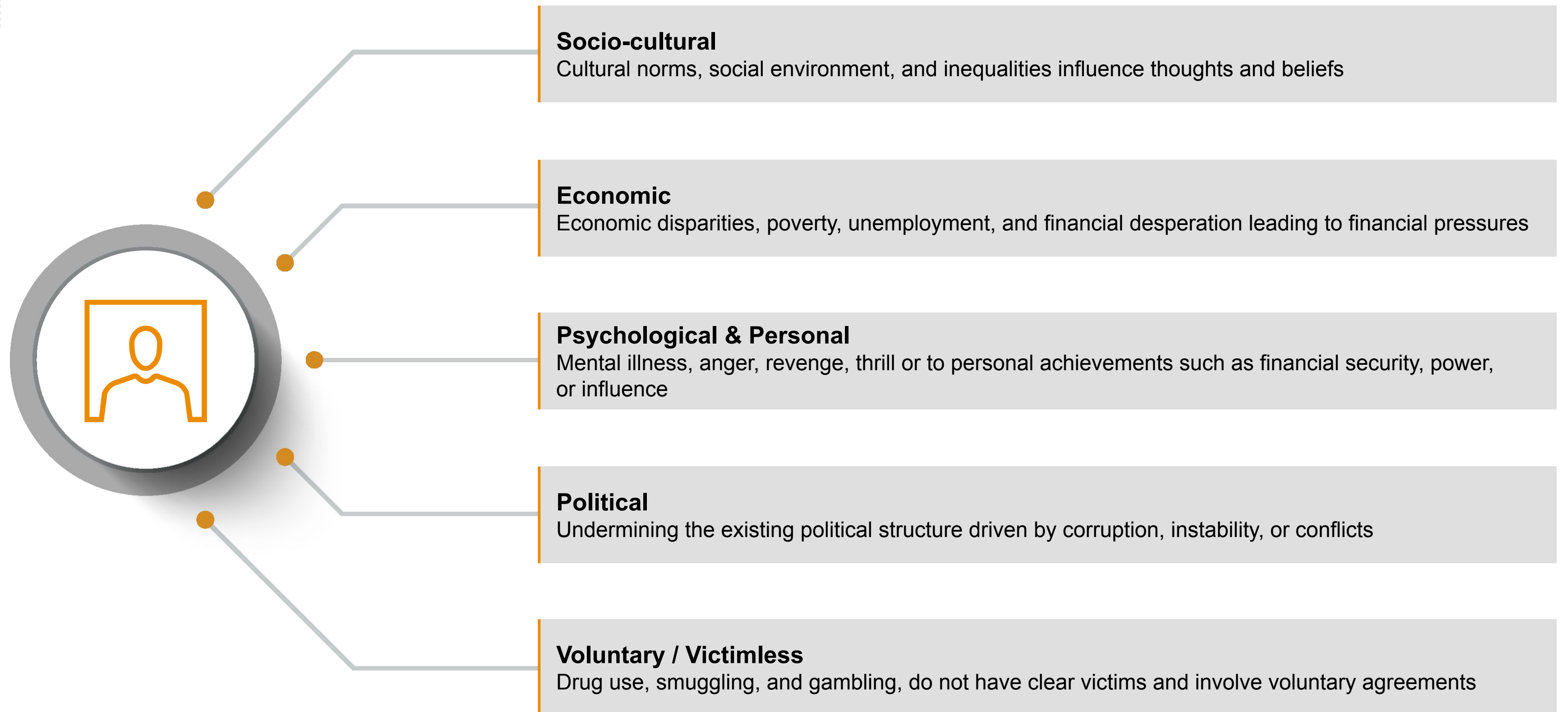
Rajat Chowdhary

Technology Consulting  
PwC Middle East

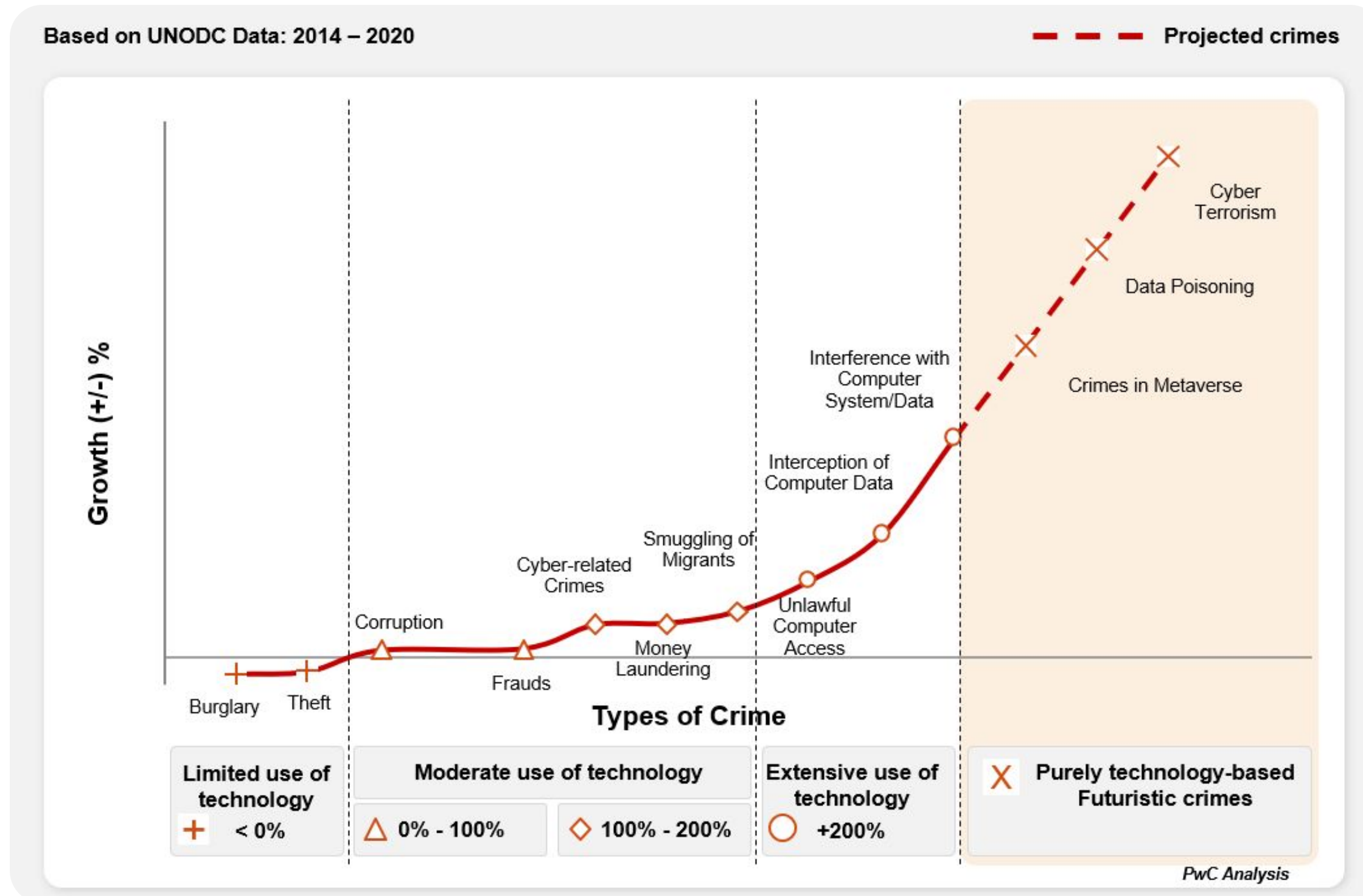
04



# Understanding the catalysts: Factors influencing criminal behavior



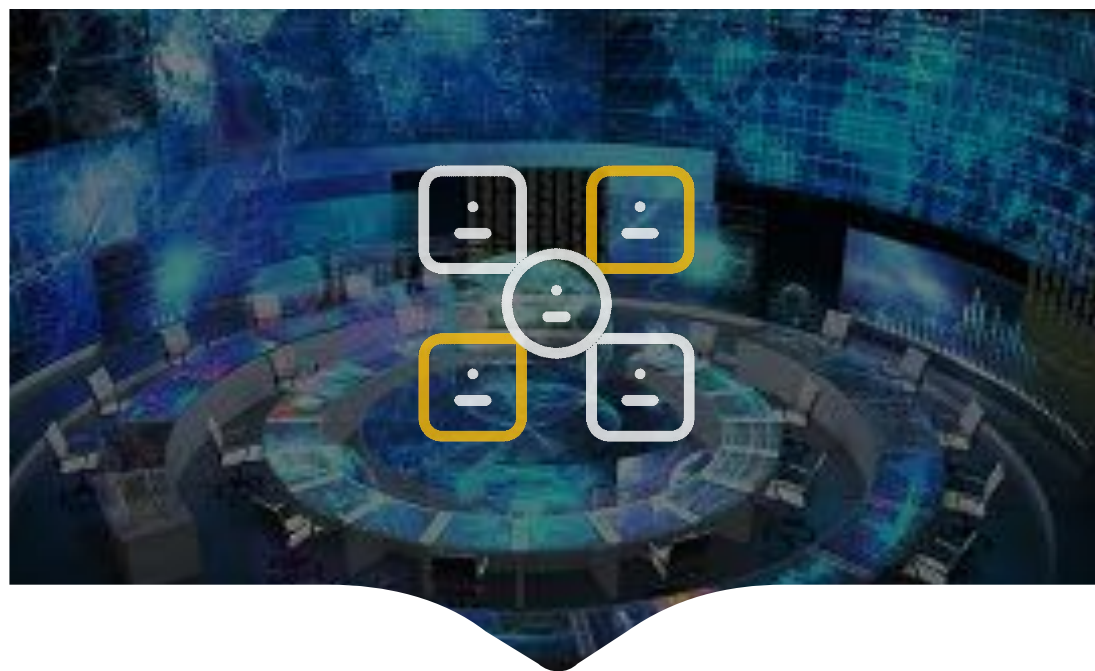
# Technological advancements have directly impacted criminal activities, which is evident in the crime evolution curve



- **Technological advancements are leading to an upsurge in future crimes** with greater benefits for minimal effort
- **Digitally-enabled crimes capitalise on key aspects** such as minimal risk of detection, increased convenience and democratised technology skillset
- Purely **technology-centric crimes** are reinventing the **future crime landscape**

# Role of Public Safety Agencies: Adapting to the changing crime landscape

A three-pronged model based on a tech-first approach can pre-empt, predict and prescribe response to future crimes



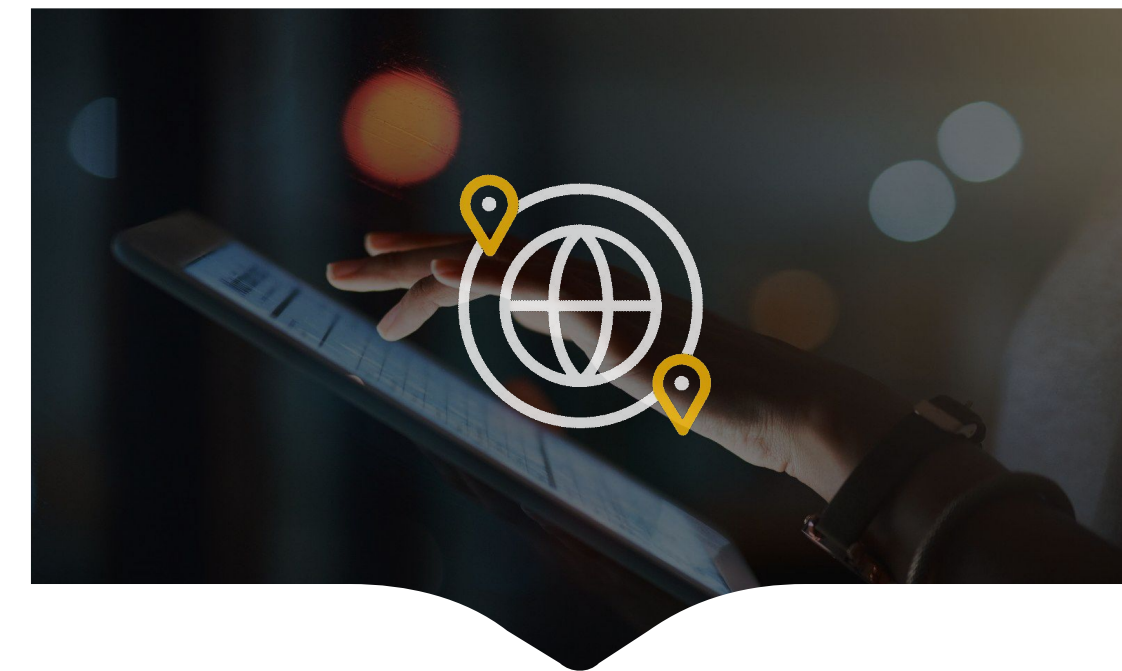
## Collaborative Coordination

“Collaborating for policy formulation and other initiatives”



## Competency Cultivation

“Upskilling and reskilling of PSA personnels”



## Community Cohesion

“Engaging with communities for a safer society”

## COLLABORATIVE COORDINATION



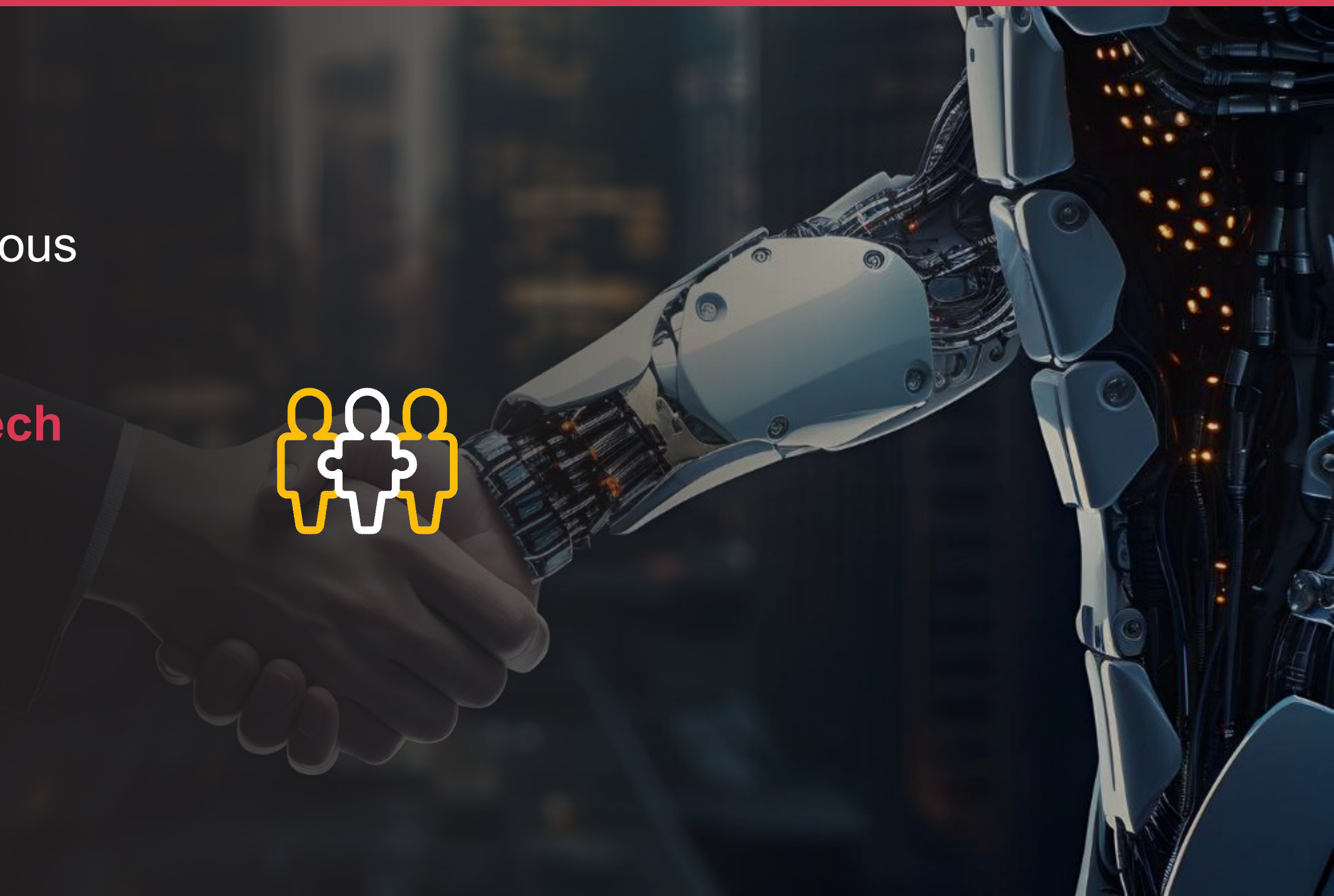
**Tech-powered Collaborative Decision Model (CDM)** drives operational efficiency & inter-agency coordination

Two approaches for activation - **platform and framework model**

# COMPETENCY CULTIVATION

**Re-inventing training programmes** by continuous learning & feedback

**Infusion of emerging tech and domain-specific trainings** are some enablers



## COMMUNITY COHESION



Accelerator for a **resilient, aware community** in the form of **community policing**

Three elements of effective community engagement - **communication, cohesion and capacity building**



**Q&A**





Thank you

