



The Next Era for PwC

2026 calendar

Scan for a digital copy



PwC profile



636

cities in 136 countries



364,782

global headcount



500+

Ghana headcount



18

Partners/Directors

At PwC, our purpose is to build trust in society and solve important problems.

We are a passionate community of solvers working together in unexpected ways to create solutions that untangle some of the world's most complex problems. We combine perspectives and technologies to create new solutions, and help our clients build trust and make a lasting difference.

We are a network of firms in 136 countries with over 364,000 people who are committed to delivering quality in Assurance, Consulting and Risk Services, Tax and Legal Services and Deals.

PwC Ghana

We offer professional services to both the private and public sectors in the following industries:

Consumer and Industrial Products and Services	Financial Services
Energy, Utilities and Resources	Government and Public Sector

PwC Ghana is a member firm of PricewaterhouseCoopers International Limited, each member firm of which is a separate legal entity.

PwC Ghana is located in Accra with a branch office in Sierra Leone, and has over 500 employees and 18 resident partners/directors.

Our leadership



Vish Ashiagbor
Country Senior Partner
vish.ashiagbor@pwc.com



George Arhin
Leader, Assurance
george.arhin@pwc.com



Ayesha Bedwei Ibe
Leader, Tax
ayesha.a.bedwei@pwc.com



Kingsford Arthur
Leader, Deals
kingsford.arthur@pwc.com



Maxwell Darkwa
Partner, Assurance
maxwell.darkwa@pwc.com



Nelson B. Opoku
Partner, Africa CFO & COO WMA
nelson.b.opoku@pwc.com



Edward Eyram Gomado
Partner, Assurance
edward.gomado@pwc.com



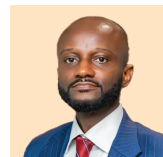
Abeku Gyan-Quansah
Partner, Tax
abeku.gyan-quansah@pwc.com



Hayfron Aboagye
Partner, Assurance
hayfron.aboagye@pwc.com



Kingsley Owusu-Ewli
Partner, Tax
kingsley.owusu-ewli@pwc.com



Richard Ansong
Partner, Assurance
richard.ansong@pwc.com



Lydia Pwadura
Partner, Tax
lydia.p.pwadura@pwc.com



Prince Adufutse
Partner, Assurance
prince.adufutse@pwc.com



Dzidzedze Fiadjoe
Partner, Tax
dzidzedze.fiadjoe@pwc.com



Destiny Attatsitsey
Partner, Assurance
destiny.s.attatsitsey@pwc.com



Clara Amarteifio-Taylor
Partner, Deals
clara.a.amarteifiotaylor@pwc.com



Winfred King
Partner, Consulting and Risk Services
winfred.king@pwc.com

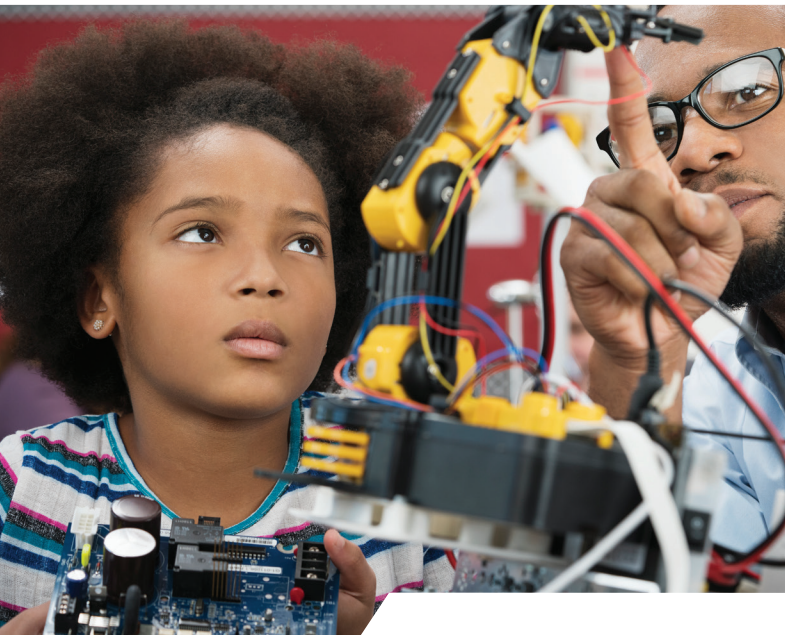


Augustina Ekua Mills
Partner, Deals
augustina.e.mills@pwc.com



We build for what's next so you can get there now

PwC brings the sharpest minds in tech. Deep expertise that industries are built on. And rolling up our sleeves to deliver results. Alongside you. Start to finish.



January

Mon	Tue	Wed	Thu	Fri	Sat	Sun
			1	2	3	4
5	6	7	8	9	10	11
12	13	14	15	16	17	18
19	20	21	22	23	24	25
26	27	28	29	30	31	

Public Holiday(s)

- 1: New Year's Day
- 7: Constitution Day



Scan for
Business
School
trainings

Tax compliance due dates

- 14** **SSP:** Payment for December 2025
- 15** **WHVAT, PAYE and WHT:** Reporting and payment for December 2025
- 21** **VAT, NHIL, GETFL and CHRL on imported services:** Reporting and making payment of tax for December 2025
- 30** **MR:** Filing of return and payment of mineral royalties by mining companies for the last quarter of 2025
 - CIT:** Filing of quarterly return and payment of tax by upstream oil & gas contractors
 - CIT:** Filing of return and making outstanding payment for companies with 30 September year end
 - CIT:** Payment of quarterly tax for companies with 31 January, 30 April, 31 July and 31 October year ends
 - SSR:** Submission of report for January 2026
 - SETP:** Filing of estimate for companies with 31 October year end



Business Model Reinvention

The rules of the game for business success are changing, driven by five megatrends that are creating new opportunities while eroding old ones. We help clients reinvent how their companies create, deliver, and capture value.



February

Mon	Tue	Wed	Thu	Fri	Sat	Sun
						1
2	3	4	5	6	7	8
9	10	11	12	13	14	15
16	17	18	19	20	21	22
23	24	25	26	27	28	



Scan for
Business
School
trainings

Tax compliance due dates

- 13** **SSP:** Payment for January 2026
WHVAT, PAYE and WHT: Reporting and payment for January 2026
- 20** **VAT, NHIL, GETFL and CHRL on imported services:** Reporting and making payment of tax for January 2026
- 27** **VAT, NHIL, GETFL, CHRL and CST:** Reporting and making payment for January 2026
CIT: Filing of return and making outstanding payment for companies with 31 October year end
CIT: Payment of quarterly tax for companies with 28 February, 31 May, 31 August and 30 November year ends
SSR: Submission of report for February 2026
SETP: Filing of estimate for companies with 30 November year end



Industry-leading expertise

We bring expertise that industries are built on so you can make decisions your future can stand on.



March

Mon	Tue	Wed	Thu	Fri	Sat	Sun
						1
2	3	4	5	6	7	8
9	10	11	12	13	14	15
16	17	18	19	20	21	22
23	24	25	26	27	28	29
30	31					

Public Holiday(s)

6: Independence Day
20: Eid-al-Fitr



Scan for
Business
School
trainings

Tax compliance due dates

- 13** **SSP:** Payment for February 2026
WHVAT, PAYE and WHT: Reporting and payment for February 2026
- 19** **VAT, NHIL, GETFL and CHRL on imported services:** Reporting and making payment of tax for February 2026
- 31** **VAT, NHIL, GETFL, CHRL and CST:** Reporting and making payment for February 2026
CIT: Filing of return and making outstanding payment for companies with 30 November year end
CIT: Payment of quarterly tax for companies with 31 March, 30 June, 30 September and 31 December year ends
GSL and FSRL: Payment of quarterly tax for qualifying companies and institutions
SSR: Submission of report for March 2026
SETP: Filing of estimate for companies with 31 December year end



Responsible AI in action: Client Zero

For us, responsible AI means starting with our own operations, applying human-led technology to empower people, enhance tools, and deliver real impact for clients.



April

Mon	Tue	Wed	Thu	Fri	Sat	Sun
		1	2	3	4	5
6	7	8	9	10	11	12
13	14	15	16	17	18	19
20	21	22	23	24	25	26
27	28	29	30			

Public Holiday(s)

3: Good Friday
6: Easter Monday



Scan for
Business
School
trainings

Tax compliance due dates

- 14** **SSP:** Payment for March 2026
- 15** **WHVAT, PAYE and WHT:** Reporting and payment for March 2026
- 21** **VAT, NHIL, GETFL and CHRL on imported services:** Reporting and making payment of tax for March 2026
- 30** **VAT, NHIL, GETFL, CHRL and CST:** Reporting and making payment for March 2026
 - MR:** Filing of return and payment of royalties and GSL by mining companies
 - CIT:** Filing of quarterly return and payment of tax by upstream oil & gas contractors
 - CIT:** Filing of return and making outstanding payment for companies with 31 December year end
 - CIT:** Payment of quarterly tax for companies with 31 January, 30 April, 31 July and 31 October year ends
 - EATD:** Filing of schedule for 2025
 - PIT:** Filing of individual returns for 2025
 - SSR:** Submission of report for April 2026
 - SETP:** Filing of estimate for companies with 31 January year end



We're making sure you're ready for what's next

We bring together the teams, resources and alliances you need to act boldly and achieve real results. We help you meet the demands of our ever-changing world with consistent quality and objective advice.



May

Mon	Tue	Wed	Thu	Fri	Sat	Sun
				1	2	3
4	5	6	7	8	9	10
11	12	13	14	15	16	17
18	19	20	21	22	23	24
25	26	27	28	29	30	31

Public Holiday(s)

1: Labour Day
25: African Union Day
26: Ei al-Adha



Scan for
Business
School
trainings

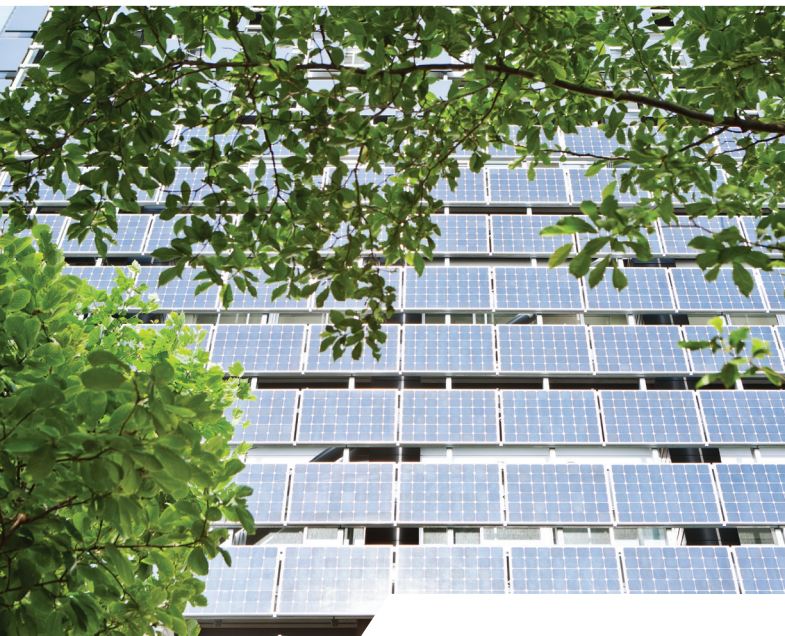
Tax compliance due dates

- 14** **SSP:** Payment for April 2026
- 15** **WHVAT, PAYE and WHT:** Reporting and payment for April 2026
- 21** **VAT, NHIL, GETFL and CHRL on imported services:** Reporting and making payment of tax for April 2026
- 29** **VAT, NHIL, GETFL, CHRL and CST:** Reporting and making payment for April 2026
CIT: Filing of return and making outstanding payment for companies with 31 January year end
CIT: Payment of quarterly tax for companies with 28 February, 31 May, 31 August and 30 November year ends
SSR: Submission of report for May 2026
SETP: Filing of estimate for companies with 28 February year end



Sustainability that works

We enhance strategy with sustainability so you can strengthen resilience and returns. We help clients move toward greater sustainability not just as an obligation but as an opportunity to create value.



June

Mon	Tue	Wed	Thu	Fri	Sat	Sun
1	2	3	4	5	6	7
8	9	10	11	12	13	14
15	16	17	18	19	20	21
22	23	24	25	26	27	28
29	30					



Scan for
Business
School
trainings

Tax compliance due dates

- 12** **SSP:** Payment for May 2026
 - 15** **WHVAT, PAYE and WHT:** Reporting and payment for May 2026
 - 19** **VAT, NHIL, GETFL and CHRL on imported services:** Reporting and making payment of tax for May 2026
 - 30** **VAT, NHIL, GETFL, CHRL and CST:** Reporting and making payments for May 2026
- CIT:** Filing of return and making outstanding payment for companies with 28 February year end
- CIT:** Payment of quarterly tax for companies with 31 March, 30 June, 30 September and 31 December year ends
- GSL and FSRL:** Payment of quarterly tax for qualifying companies and institutions
- SSR:** Submission of report for June 2026
- SETP:** Filing of estimate for companies with 31 March year end



AI tailored to perform

Artificial intelligence is revolutionising the way we work and live and this will only accelerate as its capabilities grow. We know how your business works so you can put AI to work for your business.



July

Mon	Tue	Wed	Thu	Fri	Sat	Sun
		1	2	3	4	5
6	7	8	9	10	11	12
13	14	15	16	17	18	19
20	21	22	23	24	25	26
27	28	29	30	31		

Public Holiday(s)

1: Republic Day



Scan for
Business
School
trainings

Tax compliance due dates

- 14** **SSP:** Payment for June 2026
 - 15** **WHVAT, PAYE and WHT:** Reporting and payment for June 2026
 - 21** **VAT, NHIL, GETFL and CHRL on imported services:** Reporting and making payment of tax for June 2026
 - 31** **VAT, NHIL, GETFL, CHRL and CST:** Reporting and making payment for June 2026
- MR:** Filing of return and payment of royalties and GSL by mining companies
- CIT:** Filing of quarterly return and payment of tax by upstream oil & gas contractors
- CIT:** Filing of return and making outstanding payment for companies with 31 March year end
- CIT:** Payment of quarterly tax for companies with 31 January, 30 April, 31 July and 31 October year ends
- SSR:** Submission of report for July 2026
- SETP:** Filing of estimate for companies with 30 April year end



AI as a growth engine

Treating AI solely as a cost-cutting tool limits its potential. Companies that use it to unlock new markets and revenue streams gain far greater value.



August

Mon	Tue	Wed	Thu	Fri	Sat	Sun
					1	2
3	4	5	6	7	8	9
10	11	12	13	14	15	16
17	18	19	20	21	22	23
24	25	26	27	28	29	30
31						



Scan for
Business
School
trainings

Tax compliance due dates

- 14** **SSP:** Payment for July 2026
WHVAT, PAYE and WHT: Reporting and payment of July 2026
- 21** **VAT, NHIL, GETFL and CHRL on imported services:** Reporting and making payment of tax for July 2026
- 31** **VAT, NHIL, GETFL, CHRL and CST:** Reporting and making payment of tax for July 2026
CIT: Filing of return and making outstanding payment for companies with 30 April year end
CIT: Payment of quarterly tax for companies with 28 February, 31 May, 31 August and 30 November year ends
SSR: Submission of report for August 2026
SETP: Filing of estimate for companies with 31 May year end



We help businesses transform, innovate and lead.

We're a tech-forward, people-empowered network. With deep expertise and advanced capabilities, we'll help you harness technology, make smart investments and be ready for any future.



September

Mon	Tue	Wed	Thu	Fri	Sat	Sun
	1	2	3	4	5	6
7	8	9	10	11	12	13
14	15	16	17	18	19	20
21	22	23	24	25	26	27
28	29	30				

Public Holiday(s)

21: Kwame Nkrumah
Memorial Day



Scan for
Business
School
trainings

Tax compliance due dates

- 14** **SSP:** Payment for August 2026
- 15** **WHVAT, PAYE and WHT:** Reporting and payment for August 2026
- 18** **VAT, NHIL, GETFL and CHRL on imported services:** Reporting and making payment of tax for August 2026
- 30** **VAT, NHIL, GETFL, CHRL and CST:** Reporting and making payment for August 2026
 - CIT:** Filing of return and making outstanding payment for companies with 31 May year end
 - CIT:** Payment of quarterly tax for companies with 31 March, 30 June, 30 September and 31 December year ends
 - GSL and FSRL:** Payment of quarterly levies for qualifying companies and institutions
 - SSR:** Submission of report for September 2026
 - SETP:** Filing of estimate for companies with 30 June year end



Our purpose is to build trust in society and solve important problems

The world never stops moving—and neither do you. We're here to help you build, accelerate and sustain momentum.



October

Mon	Tue	Wed	Thu	Fri	Sat	Sun
			1	2	3	4
5	6	7	8	9	10	11
12	13	14	15	16	17	18
19	20	21	22	23	24	25
26	27	28	29	30	31	



Scan for
Business
School
trainings

Tax compliance due dates

- 14** **SSP:** Payment for September 2026
- 15** **WHVAT, PAYE and WHT:** Reporting and payment for September 2026
- 21** **VAT, NHIL, GETFL and CHRL on imported services:** Reporting and making payment of tax for September 2026
- 30** **VAT, NHIL, GETFL, CHRL and CST:** Reporting and making payment for September 2026
 - MR:** Filing of return and payment of royalties and GSL by mining companies
 - CIT:** Filing of quarterly return and payment of tax by upstream oil & gas contractors
 - CIT:** Filing of return and making outstanding payment for companies with 30 June year end
 - CIT:** Payment of quarterly tax for companies with 31 January, 30 April, 31 July and 31 October year ends
- SSR:** Submission of report for October 2026
- SETP:** Filing of estimate for companies with 31 July year end



AI strategy: The competitive edge

A strong AI strategy delivers immediate value beyond efficiency, enabling smarter decisions and innovation. Companies that embed AI early gain lasting advantages over those that delay.



November

Mon	Tue	Wed	Thu	Fri	Sat	Sun
						1
2	3	4	5	6	7	8
9	10	11	12	13	14	15
16	17	18	19	20	21	22
23	24	25	26	27	28	29
30						



Scan for
Business
School
trainings

Tax compliance due dates

- 13** **SSP:** Payment for October 2026
WHVAT, PAYE and WHT: Reporting and payment for October 2026
- 20** **VAT, NHIL, GETFL and CHRL on imported services:** Reporting and making payment of tax for October 2026
- 30** **VAT, NHIL, GETFL, CHRL and CST:** Reporting and making payment for October 2026
CIT: Filing of return and making outstanding payment by companies with 31 July year end
CIT: Payment of quarterly tax for companies with 28 February, 31 May, 31 August and 30 November year ends
SSR: Submission of report for November 2026
SETP: Filing of estimate for companies with 31 August year end



Capturing the value in the decade ahead

AI, climate change and geopolitical shifts are reconfiguring the global economy. We've mapped where value is moving over the next decade, so you can build a future-ready business to capture it.



December

Mon	Tue	Wed	Thu	Fri	Sat	Sun
	1	2	3	4	5	6
7	8	9	10	11	12	13
14	15	16	17	18	19	20
21	22	23	24	25	26	27
28	29	30	31			

Public Holiday(s)

4: Farmers' Day
25: Christmas Day
26: Boxing Day



Scan for
Business
School
trainings

Tax compliance due dates

- 14** **SSP:** Payment for November 2026
- 15** **WHVAT, PAYE and WHT:** Reporting and payment for November 2026
- 21** **VAT, NHIL, GETFL and CHRL on imported services:** Reporting and making payment of tax for November 2026
- 31** **VAT, NHIL, GETFL, CHRL and CST:** Reporting and making payment for November 2026
CIT: Filing of return and making outstanding payment for companies with 31 August year end
CIT: Payment of quarterly tax for companies with 31 March, 30 June, 30 September and 31 December year ends
GSL and FSEL: Payment of quarterly tax for qualifying companies and institutions
SSR: Submission of report for December 2026
SETP: Filing of estimate for companies with 30 September year end

Glossary of terms

CIT	Company Income Tax
CHRL	COVID-19 Health Recovery Levy
CST	Communications Service Tax
EATD	Employers' Annual Tax Deduction
FSRL	Financial Sector Recovery Levy
GETFL	Ghana Education Trust Fund Levy
GSL	Growth and Sustainability Levy
MR	Mineral Royalties
NHIL	National Health Insurance Levy
PAYE	Pay As You Earn
PIT	Personal Income Tax
SETP	Statement of Estimated Tax Payable
SSP	Social Security Payment
SSR	Social Security Report
VAT	Value Added Tax
WHT	Withholding Tax
WHVAT	Withholding Value Added Tax



Contact

Accra Office:
PricewaterhouseCoopers (Ghana) LTD
A4 Rangoon Lane, Cantonments City
PMB CT 42, Accra, Ghana
Tel: +233 30 276 1500
Fax: +233 30 276 1544
www.pwc.com/gh

Sierra Leone Office:
PricewaterhouseCoopers (Ghana) LTD
No. 117 Jomo Kenyatta Road
Freetown, Sierra Leone
Tel: +232 79 998 321

This publication has been prepared to remind readers of some general important dates for filing tax returns and making tax payments administered by the Ghana Revenue Authority (GRA). The taxes covered are Income Tax - Company Income Tax, Personal Income Tax, Pay As You Earn and other Withholding Taxes; Financial Sector Recovery Levy; Growth and Sustainability Levy; Value Added Tax, Ghana Education Trust Fund Levy; National Health Insurance Levy; COVID-19 Health Recovery Levy; and Communications Service Tax. Due dates for filing Income Tax estimate and Mineral Royalties returns have also been presented. Additionally, we have provided the due dates for submitting Retirement Contributions reports and making payments to the Social Security and National Insurance Trust and other appropriate approved trustee(s).

Additional and substituted holidays have not been shown in this publication. Historically, if a compliance date is declared a public holiday, the working day preceding the holiday is considered by the GRA as the new date for statutory compliance purposes.

Although we have taken reasonable care in compiling this calendar, it does not constitute professional advice. You should therefore not act upon the information contained in this publication without obtaining specific professional advice. No representation or warranty (express or implied) is given as to the accuracy or completeness of the information contained in this publication, and/or to the extent permitted by law. PricewaterhouseCoopers (Ghana) LTD, its members, employees and agents do not accept or assume any liability, responsibility or duty of care for any consequences of you or anyone else acting, or refraining to act, in reliance of the information contained in this publication or for any decision based on it.

Note:

Where the actual due date which falls on a weekend or public holiday, the date indicated is the last working day preceding the actual due date. However, with the introduction of the online filing platforms (Ghana.Gov and Taxpayers Portal), taxpayers can file returns and make payments even on weekends or public holidays.