



Trust begins with transparency

©2023 PwC. All rights reserved. PwC refers to the PwC network and/or one or more of its member firms, each of which is a separate legal entity. Please see www.pwc.com/structure for further details.

At PwC, our purpose is to build trust in society and solve important problems. We're a passionate community of solvers working together in unexpected ways to create solutions that untangle some of the world's most complex problems. We combine perspectives and technologies to create new solutions, help and our clients build trust and make a lasting difference.

We're a network of firms in 152 countries with 327,000+ people who are committed to delivering quality in assurance, advisory and tax services.



Recycled paper

Contact us

Territory	Address	Telephone	Facsimile	Also contact for queries on
The Bahamas (BS)	2 Bayside Executive Park West Bay Street & Blake Road Nassau	(242) 302-5300	(242) 302-5350	
Barbados (BB)	The Financial Services Centre Bishop's Court Hill St. Michael BB14004	(246) 626-6700	(246) 436-1275	Anguilla, Antigua and Barbuda, Dominica, Grenada, Montserrat, St. Kitts-Nevis, St. Vincent & the Grenadines
Bermuda (BM)	4th Floor Washington House 16 Church St Hamilton HM11	(441) 295-2000	(441) 295-1242	
British Virgin Islands (BVI)	Level 3 Geneva Place P.O. Box 4654, Road Town Tortola	(284) 494-4100	(284) 494-4480	
Cayman Islands (KY)	18 Forum Lane Camana Bay Grand Cayman KY1-1104	(345) 949-7000	(345) 949-7352	
Guyana (GY)	Pegasus Corporate office Kingston Georgetown			
Jamaica (JM)	Scotiabank Centre Duke Street, Kingston	(876) 922-6230	(876) 922-7581	
St. Lucia (LC)	Unit 111 Johnsons Centre No. 2 Bella Rosa Road P.O. Box BW 304, Gros Islet	(758) 722-6700	(246) 436-1275	
Trinidad and Tobago (TT)	11-13 Victoria Avenue Port of Spain	(868) 299-0700	(868) 623-6025	

Trust begins with transparency



A very happy New Year to you, from all of us at PwC.

Amidst the onslaught of global challenges like the pandemic, climate change and the Great Resignation, to cyber, supply chain insecurity and geopolitical risk, it might seem brave to opine on prospects for the future. And while the convergence of these global forces may understandably leave many feeling overwhelmed, I believe we have an opportunity to reframe the way we see the world and take action towards a positive outcome.

Building trust

As the most trusted institution, business—along with governments, communities and civil society—has an unprecedented opportunity, and responsibility, to lead. For organisations that aim to inspire confidence, it is essential to do so amongst a broad group of stakeholders—from investors, employees and customers to local communities—and to offer greater transparency and a broad set of valid data ranging from financial results to Environmental, Social, and Corporate Governance (ESG) metrics.

Delivering sustained outcomes

The successful organisations of the future will be those that are able to reimagine the possible, redefine strategy and implement operating models to find long-term solutions against a backdrop of constant change and growing expectations. Those that embrace the role of a valuable, purpose-driven contributor to society—and whose leaders make bold, long-term decisions consistent with that role—will earn trust. Reorienting companies towards a value creation ecosystem that adds sustainability, employee engagement and broader societal impact to financial imperatives as measures of success will not only build resilience but will define the markets of the future and shape the world we live in.

The New Equation

It's been more than a year since we launched our strategy, The New Equation, which focuses on how we bring together unique combinations of people, powered by technology, to help our clients build trust with their stakeholders and deliver sustained outcomes. And today we are even more passionate about the need for us to deliver on that strategy.

Helping our clients and stakeholders navigate the issues they are facing is the reason we are here. Solving these challenges will require deep expertise in multiple disciplines, which in turn means we can provide rewarding work and exciting career development opportunities for our people and build an even more diverse range of capabilities needed to help solve important problems.

I am grateful to all of my colleagues across the Caribbean who live our values every day, making a difference and delivering on our purpose to solve complex problems for our clients. Together, we will chart a course to earn trust, deliver sustainable outcomes and make a lasting impact on business, our environment and society. It all adds up to The New Equation.

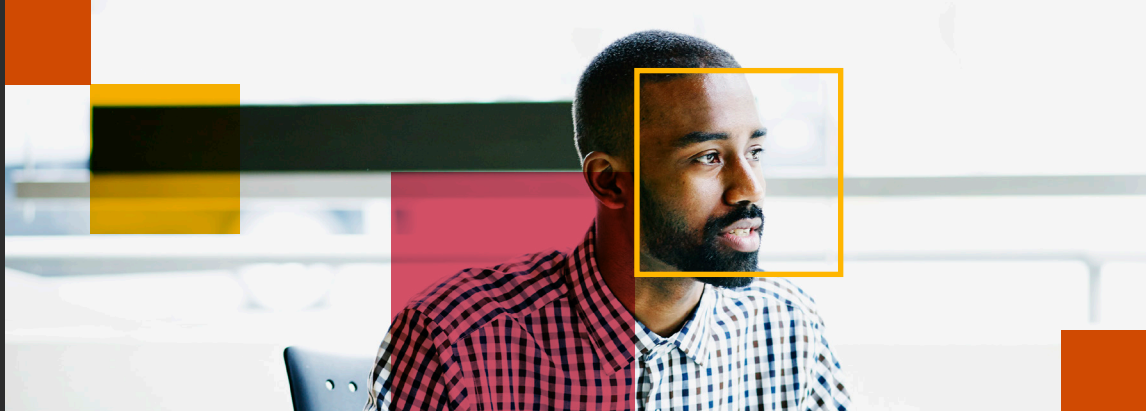
Warm regards,

Frazer Lindsay,
CEO, PricewaterhouseCoopers Caribbean
Region Ltd.



SCAN ME

Learn how
we're building
trust and
delivering
sustained
outcomes



December 2022

Sun	Mon	Tue	Wed	Thu	Fri	Sat
				1	2	3
4	5	6	7	8	9	10
11	12	13	14	15	16	17
18	19	20	21	22	23	24
25	26	27	28	29	30	31

February 2023

Sun	Mon	Tue	Wed	Thu	Fri	Sat
			1	2	3	4
5	6	7	8	9	10	11
12	13	14	15	16	17	18
19	20	21	22	23	24	25
26	27	28				

January 2023

Sun	Mon	Tues	Wed	Thu	Fri	Sat
1 New Year's Day	2	3	4	5	6	7
8	9	10	11	12	13	14
15	16	17	18	19	20	21
22	23	24	25	26	27	28
29	30	31				

Pandemic Contribution Levy
BB 15
BB 30

Income Tax
TT 15

Payroll Tax
BB 15
BM 15
BVI 21
GY 14
JM 14
LC 7
LC 15
TT 15

VAT
BB 21
JM 31
LC 21
TT 25

Withholding
BB 15
JM 14



SCAN ME

Learn how
we're building
trust and
delivering
sustained
outcomes



January 2023

Sun	Mon	Tue	Wed	Thu	Fri	Sat
1	2	3	4	5	6	7
8	9	10	11	12	13	14
15	16	17	18	19	20	21
22	23	24	25	26	27	28
29	30	31				

March 2023

Sun	Mon	Tue	Wed	Thu	Fri	Sat
			1	2	3	4
5	6	7	8	9	10	11
12	13	14	15	16	17	18
19	20	21	22	23	24	25
26	27	28	29	30	31	

February 2023

Sun	Mon	Tues	Wed	Thu	Fri	Sat
			1	2	3	4
5	6	7	8	9	10	11
12	13	14	15	16	17	18
19	20	21	22	23	24	25
26	27	28				

Pandemic Contribution Levy
BB 15
BB 30

Payroll Tax
BB 15
BB 28
BVI 21
GY 14
JM 14
LC 7
LC 15
TT 15

VAT
BB 21
JM 28
LC 21
TT 25

Withholding
BB 15
JM 14





Learn how
we're building
trust and
delivering
sustained
outcomes



February 2023

Sun	Mon	Tue	Wed	Thu	Fri	Sat
			1	2	3	4
5	6	7	8	9	10	11
12	13	14	15	16	17	18
19	20	21	22	23	24	25
26	27	28				

April 2023

Sun	Mon	Tue	Wed	Thu	Fri	Sat
						1
2	3	4	5	6	7	8
9	10	11	12	13	14	15
16	17	18	19	20	21	22
23	24	25	26	27	28	29
30						

March 2023

Sun	Mon	Tues	Wed	Thu	Fri	Sat
			1	2	3	4
5	6	7	8	9	10	11
12	13	14	15	16	17	18
19	20	21	22	23	24	25
26	27	28	29	30	31	

Pandemic Contribution Levy
BB 15
BB 30

Income Tax
BB 15
GY 15
JM 15
LC 25
LC 31
TT 31

Payroll Tax
BB 15
BVI 21
GY 14
JM 14
JM 31
LC 7
LC 15
TT 15

VAT
BB 21
JM 31
LC 21
TT 25

Withholding
BB 15
JM 14



Learn how
we're building
trust and
delivering
sustained
outcomes



March 2023

Sun	Mon	Tue	Wed	Thu	Fri	Sat
			1	2	3	4
5	6	7	8	9	10	11
12	13	14	15	16	17	18
19	20	21	22	23	24	25
26	27	28	29	30	31	

May 2023

Sun	Mon	Tue	Wed	Thu	Fri	Sat
	1	2	3	4	5	6
7	8	9	10	11	12	13
14	15	16	17	18	19	20
21	22	23	24	25	26	27
28	29	30	31			

April 2023

Sun	Mon	Tues	Wed	Thu	Fri	Sat
						1
2	3	4	5	6	7 Good Friday	8
9	10	11	12	13	14	15
16	17	18	19	20	21	22
23	24	25	26	27	28	29
30	Pandemic Contribution Levy					VAT
	BB 15					BB 21
	BB 30					JM 28
	Income Tax					LC 21
	BB 30					TT 25
	GY 1					
	GY 30					
	TT 15					
	TT 30					
	Payroll Tax					
	BB 15					
	BM 15					
	BVI 21					
	GY 14					
	JM 14					
	LC 7					
	LC 15					
	TT 15					
	Withholding					
	BB 15					
	JM 14					



Learn how
we're building
trust and
delivering
sustained
outcomes



April 2023

Sun	Mon	Tue	Wed	Thu	Fri	Sat
						1
2	3	4	5	6	7	8
9	10	11	12	13	14	15
16	17	18	19	20	21	22
23	24	25	26	27	28	29
30						

June 2023

Sun	Mon	Tue	Wed	Thu	Fri	Sat
				1	2	3
4	5	6	7	8	9	10
11	12	13	14	15	16	17
18	19	20	21	22	23	24
25	26	27	28	29	30	

May 2023

Sun	Mon	Tues	Wed	Thu	Fri	Sat
	1	2	3	4	5	6
7	8	9	10	11	12	13
14	15	16	17	18	19	20
21	22	23	24	25	26	27
28	29	30	31			

Payroll Tax
BB 15
BVI 21
GY 14
JM 14
LC 7
LC 15
TT 15

VAT
BB 21
JM 31
LC 21
TT 25

Withholding
BB 15
JM 14



Learn how
we're building
trust and
delivering
sustained
outcomes



May 2023

Sun	Mon	Tue	Wed	Thu	Fri	Sat
	1	2	3	4	5	6
7	8	9	10	11	12	13
14	15	16	17	18	19	20
21	22	23	24	25	26	27
28	29	30	31			

July 2023

Sun	Mon	Tue	Wed	Thu	Fri	Sat
						1
2	3	4	5	6	7	8
9	10	11	12	13	14	15
16	17	18	19	20	21	22
23	24	25	26	27	28	29
30	31					

June 2023

Sun	Mon	Tues	Wed	Thu	Fri	Sat
				1	2	3
4	5	6	7	8	9	10
11	12	13	14	15	16	17
18	19	20	21	22	23	24
25	26	27	28	29	30	

Income Tax
BB 15
GY 15
JM 15
LC 25
TT 30

Payroll Tax
BB 15
BVI 21
GY 14
JM 14
LC 7
LC 15
TT 15

VAT
BB 21
JM 30
LC 21
TT 25

Withholding
BB 15
JM 14



Learn how
we're building
trust and
delivering
sustained
outcomes



June 2023

Sun	Mon	Tue	Wed	Thu	Fri	Sat
				1	2	3
4	5	6	7	8	9	10
11	12	13	14	15	16	17
18	19	20	21	22	23	24
25	26	27	28	29	30	

August 2023

Sun	Mon	Tue	Wed	Thu	Fri	Sat
		1	2	3	4	5
6	7	8	9	10	11	12
13	14	15	16	17	18	19
20	21	22	23	24	25	26
27	28	29	30	31		



July 2023

Sun	Mon	Tues	Wed	Thu	Fri	Sat
						1
2	3	4	5	6	7	8
9	10	11	12	13	14	15
16	17	18	19	20	21	22
23	24	25	26	27	28	29
30	31					
		Income Tax		Payroll Tax		VAT
		GY 1		BB 15		BB 21
		TT 15		BM 15		JM 31
		TT 30		BVI 21		LC 21
				GY 14		TT 25
				JM 14		
				LC 7		
				LC 15		
				TT 15		
						Withholding
						BB 15
						JM 14



Learn how
we're building
trust and
delivering
sustained
outcomes



July 2023

Sun	Mon	Tue	Wed	Thu	Fri	Sat
						1
2	3	4	5	6	7	8
9	10	11	12	13	14	15
16	17	18	19	20	21	22
23	24	25	26	27	28	29
30	31					

September 2023

Sun	Mon	Tue	Wed	Thu	Fri	Sat
					1	2
3	4	5	6	7	8	9
10	11	12	13	14	15	16
17	18	19	20	21	22	23
24	25	26	27	28	29	30

August 2023

Sun	Mon	Tues	Wed	Thu	Fri	Sat
		1	2	3	4	5
6	7	8	9	10	11	12
13	14	15	16	17	18	19
20	21	22	23	24	25	26
27	28	29	30	31		

Payroll Tax
BB 15
BVI 21
GY 14
JM 14
LC 7
LC 15
TT 15

VAT
BB 21
JM 31
LC 21
TT 25

Withholding
BB 15
JM 14





Learn how
we're building
trust and
delivering
sustained
outcomes



August 2023

Sun	Mon	Tue	Wed	Thu	Fri	Sat
		1	2	3	4	5
6	7	8	9	10	11	12
13	14	15	16	17	18	19
20	21	22	23	24	25	26
27	28	29	30	31		

October 2023

Sun	Mon	Tue	Wed	Thu	Fri	Sat
1	2	3	4	5	6	7
8	9	10	11	12	13	14
15	16	17	18	19	20	21
22	23	24	25	26	27	28
29	30	31				

September 2023

Sun	Mon	Tues	Wed	Thu	Fri	Sat
					1	2
3	4	5	6	7	8	9
10	11	12	13	14	15	16
17	18	19	20	21	22	23
24	25	26	27	28	29	30

Income Tax
BB 15
BB 30
GY 15
JM 15
LC 25
TT 30

Payroll Tax
BB 15
BVI 21
GY 14
JM 14
LC 7
LC 15
TT 15

VAT
BB 21
JM 29
LC 21
TT 25

Withholding
BB 15
JM 14



Learn how
we're building
trust and
delivering
sustained
outcomes



September 2023

Sun	Mon	Tue	Wed	Thu	Fri	Sat
					1	2
3	4	5	6	7	8	9
10	11	12	13	14	15	16
17	18	19	20	21	22	23
24	25	26	27	28	29	30

November 2023

Sun	Mon	Tue	Wed	Thu	Fri	Sat
			1	2	3	4
5	6	7	8	9	10	11
12	13	14	15	16	17	18
19	20	21	22	23	24	25
26	27	28	29	30		

October 2023

Sun	Mon	Tues	Wed	Thu	Fri	Sat
1	2	3	4	5	6	7
8	9	10	11	12	13	14
15	16	17	18	19	20	21
22	23	24	25	26	27	28
29	30	31				

Income Tax
GY 1
TT 15

Payroll Tax
BB 15
BM 15
BVI 21
GY 14
JM 14
LC 7
LC 15
TT 15

VAT
BB 21
JM 31
LC 21
TT 25

Withholding
BB 15
JM 14



Learn how
we're building
trust and
delivering
sustained
outcomes

October 2023

Sun	Mon	Tue	Wed	Thu	Fri	Sat
1	2	3	4	5	6	7
8	9	10	11	12	13	14
15	16	17	18	19	20	21
22	23	24	25	26	27	28
29	30	31				

December 2023

Sun	Mon	Tue	Wed	Thu	Fri	Sat
					1	2
3	4	5	6	7	8	9
10	11	12	13	14	15	16
17	18	19	20	21	22	23
24	25	26	27	28	29	30
31						



November 2023

Sun	Mon	Tues	Wed	Thu	Fri	Sat
			1	2	3	4
5	6	7	8	9	10	11
12	13	14	15	16	17	18
19	20	21	22	23	24	25
26	27	28	29	30		

Payroll Tax
BB 15
BVI 21
GY 14
JM 14
LC 7
LC 15
TT 15

VAT
BB 21
JM 30
LC 21
TT 25

Withholding
BB 15
JM 14



SCAN ME

Learn how
we're building
trust and
delivering
sustained
outcomes



November 2023

Sun	Mon	Tue	Wed	Thu	Fri	Sat
			1	2	3	4
5	6	7	8	9	10	11
12	13	14	15	16	17	18
19	20	21	22	23	24	25
26	27	28	29	30		

January 2024

Sun	Mon	Tue	Wed	Thu	Fri	Sat
	1	2	3	4	5	6
7	8	9	10	11	12	13
14	15	16	17	18	19	20
21	22	23	24	25	26	27
28	29	30	31			



December 2023

Sun	Mon	Tues	Wed	Thu	Fri	Sat
					1	2
3	4	5	6	7	8	9
10	11	12	13	14	15	16
17	18	19	20	21	22	23
24	25 Christmas Day	26 Boxing Day	27	28	29	30
31			Income Tax BB 15 GY 15 GY 31 JM 15 TT 31	Payroll Tax BB 15 BVI 21 GY 14 JM 14 LC 7 LC 15 TT 15	VAT BB 21 JM 29 LC 21 TT 25	Withholding BB 15 JM 14

Territory principal tax filing and payment deadlines



The Bahamas

The main source of taxation in the Commonwealth of The Bahamas is derived from the imposition of customs duties on the importation of most goods, along with VAT.

VAT returns are required to be filed online and VAT payments are to be made by the 21st of the month following the end of the VAT period, whether monthly or quarterly.

There are no significant corporate or individual income tax filing deadlines in the Commonwealth of The Bahamas due to the absence of income taxes.

Territory principal tax filing and payment deadlines



Barbados

Income Tax:	Estimated tax for individuals earning > 25% of their income from business/rent due on 15 June, 15 September and 15 December. The balance must be paid on filing of the Income Tax Return by 30 April of the following year. Other individuals must pay 50% of the income tax due on filing the Income Tax Return on 30 April of the following year and the remainder on 30 September.
Corporate Income Tax:	<p>Companies with Fiscal Periods Ended (FPE) Jan – Sep: Estimated tax payable by 15 September of current year. Income Tax Return and final payment due by the following 15 March.</p> <p>Companies with FPE Oct – Dec: Estimated tax payable by 15 December of current year and 15 March of the following year. Income Tax Return and final payment due by the following 15 June.</p>
Withholding:	Remittance of tax deducted from payments made by the 15th of the following month or within 7 days of the tax being withheld.
Payroll:	Remittance of PAYE and Social Security by the 15th of the following month.
VAT:	Filing of bimonthly VAT Return by the 21st of the month following the end of the VAT accounting period.
Tax on Assets:	Remittance of Tax on Assets by the 15th of the month following the three months periods ending 28 February, 31 May, 31 August and 30 November.
Pandemic Contribution Levy:	A temporary pandemic contribution levy is applied on the corporate profits of companies operating in telecommunications, life and general insurance, commercial banking and majors engaging in the sale of fuel. The levy rate of 15 percent is applied where the relevant companies earned net income of BBD 5 million or more in either fiscal year 2020 and or 2021. Payment of the levy commenced on 1 July 2022 and expires on 31 March 2023. The levy also applies to individuals on income from sources in Barbados, including but not limited to, income from business, office, employment, rents, dividends, interest and director fees. Pension income, benefits in kind, interest on Barbados Government Bonds and foreign sourced dividend income are excluded from the imposition of the levy. The levy is applicable to income of BBD 6,250 or more per month from 1 April 2022 at a rate of 1 percent and expires on 31 March 2023.

Territory principal tax filing and payment deadlines



Bermuda

There are no significant corporate or individual income tax filing deadlines in Bermuda due to the absence of income taxes. Payroll taxes (applicable to employees normally resident in Bermuda) are payable quarterly on or before 15 January, 15 April, 15 July and 15 October of each year.

The main sources of taxation in Bermuda are payroll taxes and the imposition of customs duties on the importation of most goods.



British Virgin Islands

There are no significant tax payment or filing deadlines in the British Virgin Islands due to the absence of income, corporate, capital gains, or withholding taxes.

The main sources of taxation in the British Virgin Islands are payroll taxes, business registration and annual licences fees, and import duties.



Cayman Islands

There are no significant tax payment or filing deadlines in the Cayman Islands due to the absence of income or capital taxes. The main sources of taxation in the Cayman Islands are the imposition of customs duties on the importation of most goods and the levying of fees by government for work permits, trade and business licences and other business related activities.

Territory principal tax filing and payment deadlines



Guyana

Income Tax: Self-employed Individuals, payment of estimated Income Tax 1 April, 1 July, 1 October, and 31 December of each year.

Corporate Income Tax: Payment of estimated Corporation Tax – 15 March, 15 June, 15 September, 15 December.

Filing of Individual/ Corporation tax returns: Tax Returns for prior year along with final tax payment – 30 April.

Withholding: Remittance of tax within 30 days of making chargeable payment.

Payroll: Remittance of PAYE by the 14th of the following month.

VAT: Filing of monthly VAT Return and payment due by 15 official working days after the end of the VAT period.



Jamaica

Income Tax: Declaration of Estimated Income & Tax Payable – 15 March. Quarterly estimated tax payments – 15 March, 15 June, 15 September and 15 December. Filing of Annual Income Tax Return for prior year plus final tax payment – 15 March.

Withholding: Remit tax/contractors levy deductible from payments made in each calendar month by the 14th of the following month along with the prescribed return.

Payroll: Filing of Return of Employer's Monthly Payroll Deductions and remittance of PAYE, Education Tax, NIS, NHT and HEART contributions by the 14th of the following month. An Annual Employer's Return in respect of all Payroll deductions is due by 31 March after the calendar year end.

VAT: Filing of monthly General Consumption Tax (GCT) Return along with payment by the last working day (excluding Saturdays, Sundays and public holidays) of the following month.

Territory principal tax filing and payment deadlines



St. Lucia

Income Tax: There is withholding of tax from salaries (pay-as-you-earn or PAYE) based on tax codes obtained when employees register with the Inland Revenue Department. Tax withheld by employers is paid to the Inland Revenue on a monthly basis. Self-employed persons and individuals in partnerships are required to pay installments by 25 March, 25 June, and 25 September. Any additional tax due is payable with the PIT return by 31 March in the following year.

Corporate Income Tax: Tax is payable in installments on 25 March, 25 June, and 25 September in each year of income, based on the preceding year's income. Any remainder is payable within three months of the end of the fiscal year.

Payroll: Remittance of Social Security by the 7th of the following month. Remittance of PAYE by the 15th of the following month.

VAT: Filing of monthly VAT returns by the 21st of the month following the end of the VAT accounting period.



Trinidad & Tobago

Income Tax: Companies & Self-Employed Individuals: Payment of Estimated Income Tax/Corporation Tax/Petroleum Profit Tax, Unemployment Levy, Business Levy, Green Fund Levy – 31 March, 30 June, 30 September, 31 December.

Supplemental Petroleum Tax is computed quarterly, to be paid and return filed by 15th of the month following the end of the quarter.

Filing of Annual Income/Corporation/Petroleum Tax Returns for prior year along with final tax payment – 30 April.

Withholding: Remittance of tax within 30 days of making chargeable payment.

Payroll: Remittance of PAYE, National Insurance and Health Surcharge by the 15th of the following month.

VAT: Filing of bimonthly VAT Return and payment due by the 25th of the following month.

January

S	M	T	W	T	F	S
1	2	3	4	5	6	7
8	9	10	11	12	13	14
15	16	17	18	19	20	21
22	23	24	25	26	27	28
29	30	31				

February

S	M	T	W	T	F	S
			1	2	3	4
5	6	7	8	9	10	11
12	13	14	15	16	17	18
19	20	21	22	23	24	25
26	27	28				

March

S	M	T	W	T	F	S
			1	2	3	4
5	6	7	8	9	10	11
12	13	14	15	16	17	18
19	20	21	22	23	24	25
26	27	28	29	30	31	

April

S	M	T	W	T	F	S
						1
2	3	4	5	6	7	8
9	10	11	12	13	14	15
16	17	18	19	20	21	22
23	24	25	26	27	28	29
30						

May

S	M	T	W	T	F	S
	1	2	3	4	5	6
7	8	9	10	11	12	13
14	15	16	17	18	19	20
21	22	23	24	25	26	27
28	29	30	31			

June

S	M	T	W	T	F	S
				1	2	3
4	5	6	7	8	9	10
11	12	13	14	15	16	17
18	19	20	21	22	23	24
25	26	27	28	29	30	

July

S	M	T	W	T	F	S
						1
2	3	4	5	6	7	8
9	10	11	12	13	14	15
16	17	18	19	20	21	22
23	24	25	26	27	28	29
30	31					

August

S	M	T	W	T	F	S
			1	2	3	4
5	6	7	8	9	10	11
12	13	14	15	16	17	18
19	20	21	22	23	24	25
26	27	28	29	30	31	

September

S	M	T	W	T	F	S
					1	2
3	4	5	6	7	8	9
10	11	12	13	14	15	16
17	18	19	20	21	22	23
24	25	26	27	28	29	30

October

S	M	T	W	T	F	S
1	2	3	4	5	6	7
8	9	10	11	12	13	14
15	16	17	18	19	20	21
22	23	24	25	26	27	28
29	30	31				

November

S	M	T	W	T	F	S
			1	2	3	4
5	6	7	8	9	10	11
12	13	14	15	16	17	18
19	20	21	22	23	24	25
26	27	28	29	30		

December

S	M	T	W	T	F	S
						1
2	3	4	5	6	7	8
9	10	11	12	13	14	15
16	17	18	19	20	21	22
23	24	25	26	27	28	29
30	31					



pwc

2023 Calendar

January

S	M	T	W	T	F	S
	1	2	3	4	5	6
7	8	9	10	11	12	13
14	15	16	17	18	19	20
21	22	23	24	25	26	27
28	29	30	31			

February

S	M	T	W	T	F	S
				1	2	3
4	5	6	7	8	9	10
11	12	13	14	15	16	17
18	19	20	21	22	23	24
25	26	27	28	29		

March

S	M	T	W	T	F	S
					1	2
3	4	5	6	7	8	9
10	11	12	13	14	15	16
17	18	19	20	21	22	23
24	25	26	27	28	29	30
31						

April

S	M	T	W	T	F	S
	1	2	3	4	5	6
7	8	9	10	11	12	13
14	15	16	17	18	19	20
21	22	23	24	25	26	27
28	29	30				

May

S	M	T	W	T	F	S
			1	2	3	4
5	6	7	8	9	10	11
12	13	14	15	16	17	18
19	20	21	22	23	24	25
26	27	28	29	30	31	

June

S	M	T	W	T	F	S
						1
2	3	4	5	6	7	8
9	10	11	12	13	14	15
16	17	18	19	20	21	22
23	24	25	26	27	28	29
30						

July

S	M	T	W	T	F	S
	1	2	3	4	5	6
7	8	9	10	11	12	13
14	15	16	17	18	19	20
21	22	23	24	25	26	27
28	29	30	31			

August

S	M	T	W	T	F	S
					1	2
3	4	5	6	7	8	9
10	11	12	13	14	15	16
17	18	19	20	21	22	23
24	25	26	27	28	29	30
31						

September

S	M	T	W	T	F	S
1	2	3	4	5	6	7
8	9	10	11	12	13	14
15	16	17	18	19	20	21
22	23	24	25	26	27	28
29	30					

October

S	M	T	W	T	F	S
		1	2	3	4	5
6	7	8	9	10	11	12
13	14	15	16	17	18	19
20	21	22	23	24	25	26
27	28	29	30	31		

November

S	M	T	W	T	F	S
					1	2
3	4	5	6	7	8	9
10	11	12	13	14	15	16
17	18	19	20	21	22	23
24	25	26	27	28	29	30

December

S	M	T	W	T	F	S
1	2	3	4	5	6	7
8	9	10	11	12	13	14
15	16	17	18	19	20	21
22	23	24	25	26	27	28
29	30	31				



pwc

2024 Calendar