

# Web Development – Creating Web Pages

## Section 1:

Please select the correct answer for each of the following questions:

- 1 What is the web?
- a. One computer connected to websites.
  - b. A vast network of connected computers.
  - c. A network of browsers.
  - d. A few apps connected to each other.

- 2 What is an example of a browser?
- a. Instagram
  - b. Facebook
  - c. Amazon
  - d. Firefox

- 3 What is **not** an example of client?
- a. Desktop computer
  - b. Laptop
  - c. Internet Explorer
  - d. Gaming Console



## Section 2:

Please choose the number on the scale that best indicates how strongly you agree or disagree with the following statements:

	Strongly disagree					Strongly agree
I understand what websites are and how they are created.	1	2	3	4	5	
I feel confident in my ability to learn more about creating webpages.	1	2	3	4	5	
I am interested in learning more about creating webpages.	1	2	3	4	5	

## Section 3:

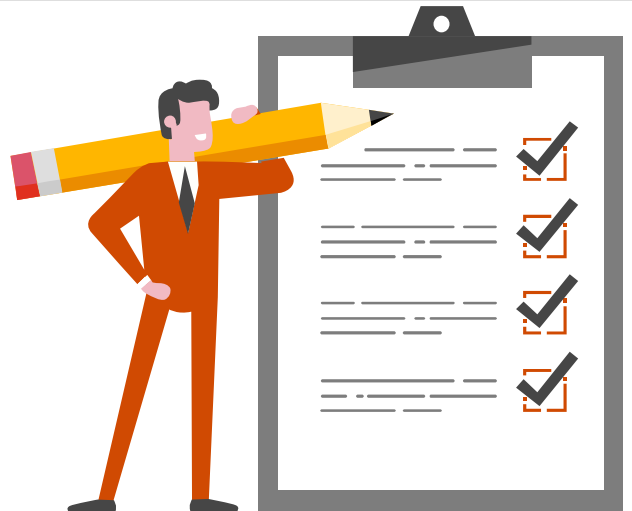
Please select from the choices below:

1 Circle your grade level.

K 1 2 3 4 5 6 7 8 9 10 11 12

2 Select the sentence that best describes you.

- a. I am a boy.
- b. I am a girl.
- c. Prefer not to answer.



## Web Development – Creating Web Pages

### Section 1:

Please select the correct answer for each of the following questions:

- 1 What is the web?
- a. One computer connected to websites.
  - b. A vast network of connected computers.
  - c. A network of browsers.
  - d. A few apps connected to each other.

- 2 What is **not** an example of a client?
- a. Desktop computer
  - b. Laptop
  - c. Internet Explorer
  - d. Gaming Console

- 3 What is an example of a browser?
- a. Instagram
  - b. Facebook
  - c. Amazon
  - d. Firefox



## Section 2:

Please choose the number on the scale that best indicates how strongly you agree or disagree with the following statements:

	Strongly disagree				Strongly agree
I understand what websites are and how they are created.	1	2	3	4	5
I feel confident in my ability to learn more about creating webpages.	1	2	3	4	5
I am interested in learning more about creating webpages.	1	2	3	4	5

## Section 3:

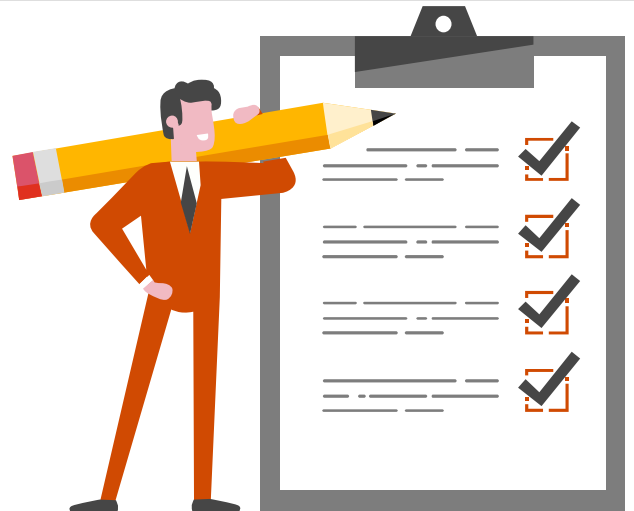
Please select from the choices below:

1 Circle your grade level.

K 1 2 3 4 5 6 7 8 9 10 11 12

2 Select the sentence that best describes you.

- a. I am a boy.
- b. I am a girl.
- c. Prefer not to answer.



This content is for general information purposes only, and should not be used as a substitute for consultation with professional advisors.

© 2020 PwC. All rights reserved. PwC refers to the PwC network and/or one or more of its member firms, each of which is a separate legal entity. Please see [www.pwc.com/structure](http://www.pwc.com/structure) for further details.