

# Problem solving – Personal innovations

## Section 1:

Please select the correct answer for each of the following questions:

1 What is an original drawing that can be used to create or build something real?

- a. A product
- b. A development
- c. A prototype
- d. A system

2 What is an example of an innovation?

- a. An iPhone
- b. A vacuum
- c. A light bulb
- d. A tree

3 What is an innovation?

- a. A new or improved idea, device or product
- b. Creating a new process
- c. A startup organization
- d. Inspiring words



**Section 2:**

Please choose the number on the scale that best indicates how strongly you agree or disagree with the following statements:

	Strongly disagree				Strongly agree
I understand what an innovation is.	1	2	3	4	5
I feel confident in my ability to learn more about innovation.	1	2	3	4	5
I am interested in learning more about innovation.	1	2	3	4	5

**Section 3:**

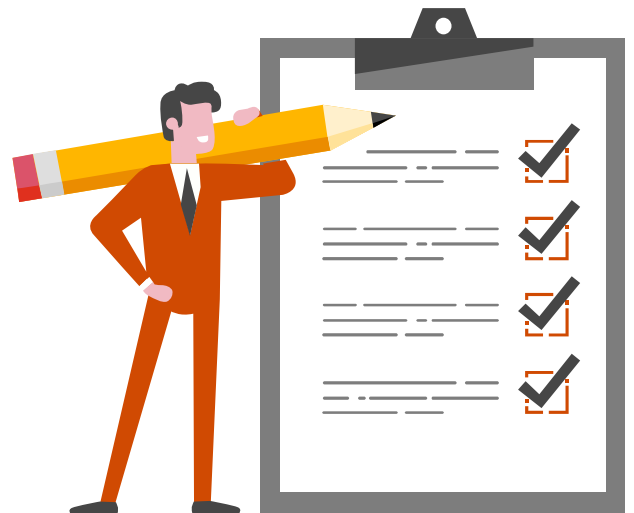
Please select from the choices below:

**1** Circle your grade level.

- K    1    2    3    4    5    6    7    8    9    10    11    12

**2** Select the sentence that best describes you.

- a. I am a boy.
- b. I am a girl.
- c. Prefer not to answer.



# Problem solving – Personal innovations

## Section 1:

Please select the correct answer for each of the following questions:

- 1 What is an innovation?
- a. A new or improved idea, device or product
  - b. Creating a new process
  - c. A startup organization
  - d. Inspiring words

- 2 What is an original drawing that can be used to create or build something real?
- a. A product
  - b. A development
  - c. A prototype
  - d. A system

- 3 What is an example of an innovation?
- a. An iPhone
  - b. A vacuum
  - c. A light bulb
  - d. A tree



**Section 2:**

Please choose the number on the scale that best indicates how strongly you agree or disagree with the following statements:

	Strongly disagree				Strongly agree
I understand what an innovation is.	1	2	3	4	5
I feel confident in my ability to learn more about innovation.	1	2	3	4	5
I am interested in learning more about innovation.	1	2	3	4	5

**Section 3:**

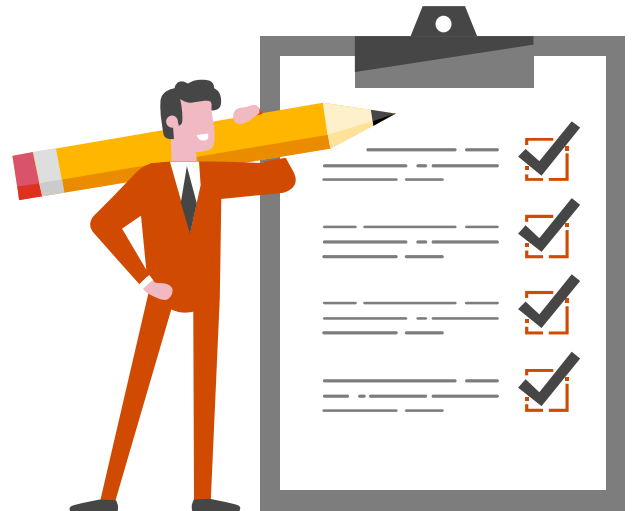
Please select from the choices below:

**1** Circle your grade level.

- K    1    2    3    4    5    6    7    8    9    10    11    12

**2** Select the sentence that best describes you.

- a. I am a boy.
- b. I am a girl.
- c. Prefer not to answer.



This content is for general information purposes only, and should not be used as a substitute for consultation with professional advisors.

© 2020 PwC. All rights reserved. PwC refers to the PwC network and/or one or more of its member firms, each of which is a separate legal entity. Please see [www.pwc.com/structure](http://www.pwc.com/structure) for further details..