



# PwC Bermuda: Our services

## 11 partners and over 150 professionals specialise in:

- Commercial re/insurance
- Personal lines
- Life re/insurance
- Captives
- Insurance-linked securities and alternatives
- Risk Advisory and Internal Audit
- Consulting and Deals

## The future of insurance is being rewritten

Markets are shifting. Technology is accelerating. Customer expectations are rising. Sustainability is no longer a choice.

The insurance industry is transforming fast—and staying competitive means moving faster. Automation, AI and digital ecosystems are redefining everything: product design, underwriting, pricing, claims.

Your success means going beyond policies, beyond traditional business models, beyond yesterday's solutions. The future belongs to those who **rethink, retool and reinvent**.

## Read our insights at: [pwc.com/bermuda](https://pwc.com/bermuda)

Cyber  
crime is

#1  
risk

Insurance Banana  
Skins: **Top risks**  
facing re/insurers

Global non-  
life run-off  
reserves:

US\$1.1  
trillion

Global Insurance  
Run-off Survey

Global  
protection  
gap:

US\$1.83  
trillion

Insurance 2035:  
**Rethinking the**  
risk business

## Advisory services for the re/insurance sector

From startup to scale-up, we're here to support your journey. Our team of insurance specialists are ready to work with you—understanding your goals, aligning with your expectations, and delivering value where it matters.

### **Advisory:** company launch

- Accounting advisory support
- Regulatory advisory support
- BMA license application support
- Development of strategy, business policies, and corporate governance support
- Human Capital consulting
- Internal audit
- Organisation readiness assessment
- Loss Reserve Specialist Opinion and Approved Actuary services

### **Advisory:** growth through to maturity

- Actuarial
- Business continuity planning
- Cybersecurity assessments
- Development of regulatory and compliance procedures
- Digital
- Internal audit solutions
- IT risk assurance
- Performance assurance solutions
- Process effectiveness
- Regulatory support
- Staff augmentation/ secondments
- Strategic finance



# How we can help

- Actuarial
- Audit and assurance services
- Advisory | Consulting and Deals
- Internal audit
- Human capital consulting | Executive search
- Tax

- Internal audit
- Regulatory | Risk assessments
- Strategy
- Digital services | Data and analytics
- Cyber and data privacy
- Sustainability



## The leading provider of professional services to re/insurers

Our team and expertise:



**Arthur Wightman**  
Insurance leader  
and ESG leader  
+1 441 505 6644  
arthur.wightman@  
pwc.com



**David Gibbons**  
Talk to me about  
Captives  
+1 441 505 6596  
david.gibbons@  
pwc.com



**Megan Green**  
Talk to me about  
asset management  
+1 441 591 1704  
megan.green@  
pwc.com



**Scott Watson-Brown**  
Talk to me about  
alternative  
investments  
+1 441 505 0989  
scott.watsonbrown@  
pwc.com



**Dan Schwarzmenn**  
Talk to me about  
deals and insolvency  
+1 441 295 2000  
danschwarzmenn@  
pwc.com



**Sean Kelly**  
Talk to me about  
insurance and  
reinsurance  
+1 441 299 7287  
sean.m.kelly@  
pwc.com



**Denis Kiberenge**  
Talk to me about  
actuarial  
+254 707 979 438  
denis.kiberenge@  
pwc.com



**Marisa Savage**  
Talk to me about  
ESG and personal  
lines insurance  
+1 441 299 7138  
marisa.savage@  
pwc.com



**Damian Sealy**  
Talk to me about  
actuarial  
+1 441 299 7219  
damian.r.sealy@  
pwc.com



**Scott Slater**  
Talk to me about  
US tax  
+1 441 537 7178  
scott.slater@  
pwc.com



**Alison Holmes**  
Talk to me about  
reinsurance  
+1 441 299 7263  
alison.holmes@  
pwc.com



**Anthony Fellowes**  
Talk to me about  
re/insurance  
+1 441 599 0560  
anthony.fellowes@  
pwc.com



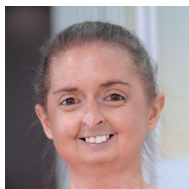
**Matthew Britten**  
Talk to me about  
reinsurance  
+1 441 299 7265  
matthew.britten@  
pwc.com



**Damian Cooper**  
Talk to me about  
life reinsurance and  
IFRS  
+1 441 505 0295  
damian.cooper@  
pwc.com



**Chris Mills**  
Talk to me about  
risk advisory  
+1 (441) 299 7162  
christopher.mills@  
pwc.com



**Kristyn Fellowes**  
Talk to me about  
deals and insolvency  
+1 441 299 7287  
kristyn.fellowes@  
pwc.com



**Jignesh Mistry**  
Talk to me about  
Actuarial and life  
reinsurance  
+1 441 299 7287  
Jignesh.j.mistry@  
pwc.com

Learn more:

