



Tax facts and figures 2020

Papua New Guinea

Contents

1 Liability to income tax

Residence	7
Gross income	7
Exempt income	7
Allowable deductions	7

2 Taxation of individuals

Financial period	9
Personal income tax rates 2020	9
Assessable income	9
Exempt income	9
Advances of leave or superannuation	9
Principal allowable deductions	10
Dependant rebates	10
Education expenses	10
Private expenditure	10
Salary or wages tax	10
Fringe benefits	12
Social security payments	14

6

Superannuation	14
Retirement savings accounts	14
Redundancy scheme	14
Provisional tax	14
Responsibility for paying salary or wages tax	15
Small business tax	15

3 Taxation of companies

16

Financial period	17
Company tax rates	17
Calculation of taxable income	17
Exempt income	17
Losses	17
Overseas losses	18
Absence of grouping provisions	18
Company amalgamations	18
Dividend payments and deemed dividends	18
Dividend rebate	18
Provisional tax	19



Contents

4 Mining, petroleum and gas operations	20	6 Manufacturing industry incentives	26
Income tax rates – Mining companies	21	Accelerated depreciation for manufacturers	27
Income tax rates – Petroleum companies	21	Double deduction for export market development costs	27
Income tax rates – Gas companies	21	Export incentives for manufacturers	27
Gas companies versus petroleum companies	21	Wages subsidy for manufacturers	28
Advance payment tax	21	7 Agriculture, fishing and tourism	29
Additional profits tax	21	Accelerated depreciation	30
Notional tax	22	Primary production	30
Deductions for mining, petroleum and gas operations	22	Investment in primary production	31
5 Taxation of other entities	23	Investment in tourism	31
Partnerships	24	Double deduction for export market development costs	31
Joint ventures	24	8 Infrastructure credits	32
Trusts	24	Prescribed infrastructure development credits	33
Unit trusts	24	Bank community service obligations	33
Property unit trusts	25	9 Regional incentives	34
Landowner resources trusts	25	Rural development incentive	35
Superannuation funds	25		



Contents

10 Other incentives	36	14 Payments to non-residents	45
Solar heating	37	Dividends	46
Exemption of certain interest income	37	Interest	46
11 Special deductions and restrictions	38	Royalties	46
Entertainment	39	Management fees	46
Management fees	39	Foreign contractors	46
Exchange gains and losses	39	Leases to non-resident associates	47
Gifts and charitable donations	39	Non-resident insurers	47
Preliminary expenditure in connection with assets	40	Overseas shipping	47
Profits on leased assets	40	Tax clearance and foreign exchange procedures	48
Interest and thin capitalisation rules	40	Transfer pricing	48
Timber operations	40	15 Double tax treaties	49
Environmental protection and clean-up costs	40	Foreign contractor withholding tax	50
12 Compliance reporting system	41	Management fee withholding tax	50
13 Tax compliance – key dates	43		



Contents

16 Goods and services tax	51	17 Other taxes	54
Rate of GST	52	Interest withholding tax	55
Registration	52	Customs duties	55
Output GST (GST on sales)	52	Excise duties	55
Input GST (GST on purchases)	52	Stamp duty	55
Import GST deferral scheme	53	Stamp duty relief	56
Accounting for GST	53	Timber export duty	56
Agriculture and second-hand goods	53	Spice levies	56
Goods and services tax – Director liability	53	Gift duty	56
		Probate duty	56
		Land tax	56
		Capital gains tax	56
		Gaming machine tax	56

This booklet outlines PNG's taxation laws for the fiscal year ending 31 December 2020 based on laws passed or announced.

The information represents a summary of significant features and should be used as a guide only. Further information or assistance may be obtained from either of the offices of PwC in PNG listed at the back of this publication.

Changes in tax law and practice are advised to clients and others on request through our regular tax updates included in PNG Pulse. If you would like to receive these and other publications of PwC, or would like information on our services to business in PNG, please contact either of our offices.



1

Liability to
income tax

1 Liability to income tax

Income tax was first levied in PNG in 1959. The power to levy income tax is one given solely to the National Government by the Constitution. The Internal Revenue Commission (“IRC”) and PNG Customs are responsible for the collection of most of PNG’s taxation revenue.

Income tax is imposed on all residents of PNG, whether they are companies or individuals. The tax applies to worldwide income. Income tax is also imposed on the PNG sourced income of non-residents.

Residence

In broad terms, an individual will be treated as a resident of Papua New Guinea in a given year of income if they actually spend, continuously or intermittently, more than six months in the country in that year.

A company will be treated as a resident if it is incorporated in PNG or if it has its central management and control in PNG, or if it carries on business in PNG and has its voting power controlled by shareholders who are residents here. Trust estates have their own strict residence rules.

A PNG resident’s taxable income is computed as follows:

Gross income from all sources	X
Less: exempt income	Y
Assessable income	$X - Y$
Less: allowable deductions	Z
Taxable income	$X - Y - Z$

Gross income

Gross income includes income from personal exertion (employment or business), interest, dividends, royalties, allowances and bonuses.

Exempt income

Exempt income includes education allowances, scholarships or bursaries, export sales of qualifying goods (see page 28), certain PNG sourced dividend income and certain government pensions.

Allowable deductions

Allowable deductions include revenue expenditure incurred in the production of assessable income or in carrying on a business for the purpose of producing assessable income (but see special provisions relating to salary or wages expenses), depreciation, various special allowances and losses of prior years.





2

Taxation of individuals

2 Taxation of individuals

Financial period

The standard financial period, or year of income, is the 12 month period ending 31 December.

Personal income tax rates 2020

Income earned by individuals is taxed at marginal rates. The rates which apply to resident individuals differ from those which apply to non-resident individuals.

From 1 January 2020 the tax rates for individuals who are residents of PNG are as follows:

Taxable Income K	Tax thereon K	Rates of tax on excess %
12,500	Nil	22
20,000	1,650	30
33,000	5,550	35
70,000	18,500	40
250,000	90,500	42

From 1 January 2020 the tax rates for individuals who are non-residents of PNG are as follows:

Taxable Income K	Tax thereon K	Rates of tax on excess %
Nil	Nil	22
20,000	4,400	30
33,000	8,300	35
70,000	21,250	40
250,000	93,250	42

Assessable income

Each individual is assessed separately. There is no joint assessment for husbands and wives.

Taxpayers who have only employment income and are fully taxed at source by virtue of salary or wages tax need not complete an annual income tax return. Taxpayers with other income such as interest, dividends, rental income, trust distribution or partnership income must disclose this in an annual income tax return.

Exempt income

Exempt income in the hands of an individual includes:

- dividends received from PNG resident companies (although in most instances such dividends will be subject to dividend withholding tax)
- distributions by a unit trust
- distributions by a property unit trust
- distributions by a landowner resources trust
- income paid by the State to non-resident expert staff appointed under the Commission of Inquiry Act.

Advances of leave or superannuation

Advances paid from amounts owed in respect of recreation leave, furlough, or superannuation to enable an employee to purchase his or her first home are not taxable at the date of the advance provided the cost of the property is K75,000 or less.

2 Taxation of individuals

Principal allowable deduction

Salary or wage earners receive a 25% rebate for allowable deductions. Non-salary or wage earners are allowed deductions for expenditure incurred in earning their assessable income and may include:

- interest on borrowed funds
- travelling expenses, in limited circumstances
- gifts of more than K50 paid to a sporting body established in PNG and qualifying charitable organisations
- depreciation of income-producing assets such as freehold, leasehold or company title buildings (except those situated outside PNG), motor vehicles, machinery and equipment
- property taxes (i.e. rates), advertising and repairs to rental properties.

Losses incurred in deriving income overseas are not deductible from PNG sourced income. Overseas losses may only be carried forward (for a period of 20 years) for deduction against overseas income.

Dependant rebates

Allowable dependant rebates for salary or wage earners are built into the calculations for deduction of salary and wages tax and are the same as for non-salary and wage earners.

Non-salary or wage earners who are resident in PNG receive the following rebates for dependants:

First dependant	15% of gross tax with a maximum of K450 and a minimum of K45
Second and third dependants	10% of gross tax with a maximum of K300 and a minimum of K30

A dependant is a person whose separate net income does not exceed K1,040 in the year and who is either:

- a spouse of the taxpayer
- an unmarried child of the taxpayer of less than 16 years of age
- a student receiving full-time education who is over 16 but less than 25 years of age
- a PNG resident parent of the taxpayer or the taxpayer's spouse.

Education expenses

Education allowances paid by an employer to meet the annual fees imposed by a school or college for the purpose of educating a student child of an employee (but not including tertiary education) are tax free.

Private expenditure

Expenditure, incurred by an individual, of a private nature such as dental or medical costs are neither deductible nor subject to rebate or credit.

Salary or wages tax

Salary or wages are widely defined to include, in addition to normal employment related receipts and benefits, any remuneration paid as consultancy fees or fees for professional services, where the remuneration is paid wholly or substantially for personal services performed in PNG.

Important features of the salary or wages tax provisions are:

- Salary or wages are subject to fortnightly assessment of tax, regardless of the employer's actual pay period. The tax assessed is a final tax unless the taxpayer is required to lodge an income tax return and is determined by reference to standard rate tables (see "Personal income tax rates" above).
- Redundancy payments made pursuant to an approved redundancy scheme are subject to concessional rates of salary or wages tax.

2 Taxation of individuals

- A salary or wages tax declaration must be completed by the employee on commencement of employment or when the employee's circumstances change and lodged by the employer with the Internal Revenue Commission ("IRC").
- The employer is responsible for the collection of salary or wages tax and payment thereof to the IRC. The employer will be held liable where an under-deduction of salary or wages tax occurs.
- An employee receiving fully taxed salary or wages is generally not required to lodge a tax return unless he or she is in receipt of other assessable income exceeding K100.
- An employer who fails to remit salary or wages tax in relation to its employees is liable for the unpaid tax together with any additional penalties that may be imposed. Where the employer is a corporate entity, this recovery mechanism is only effective to the extent that the employer is sufficiently solvent to meet the total amount outstanding.
- In the case where a corporate employer fails to remit salary or wages tax in relation to its employees, the directors of such company may be personally liable (jointly and severally) to the extent of the tax owed.



2 Taxation of individuals

Fringe benefits

Benefits provided to employees are taxed at the prescribed values listed below:

Benefit	Taxable value per fortnight
Accommodation owned or rented by employer within PNG	Nil to K2,500 per fortnight depending on area, market value or market rental per week
Mess/Barracks	Nil to K60 per fortnight depending on area
Government Mess/Barracks	Nil to K7 per fortnight depending on area
Housing allowance	The employee will be taxed on the excess of housing allowance over eligible housing expenditure and on the prescribed value of the housing. A PNG citizen who receives an allowance under a Citizen Employee First Time Home Buyer Scheme is not subject to tax on the allowance.
Motor vehicle	Vehicle and fuel provided by employer: K125 per fortnight. Vehicle only provided: K95 per fortnight
Education expenses (except tertiary education)	Nil (see comments under "Education expenses rebate" above)
Leave fares	One annual fare for the employee and his/her family to the place of recruitment or origin is exempt from tax. Alternatively, recreational fares and accommodation for travel within PNG to the value of the benefit of one annual leave fare are exempt from tax. Additional leave fares are fully taxable, however additional leave fares within PNG for a person employed solely in, or in connection with most resource projects are exempt. Additional leave fares for employees serving in hardship or remote areas may be exempted from tax at the discretion of the IRC.
Contribution by employer to an authorised or overseas superannuation fund	Nil. However, an employer is not entitled to a tax deduction for contributions made to an overseas fund.
Meals	Messing type meals: K30 per fortnight. All other meals are subject to tax on the amount equal to the employer's cost.
Public utilities, gas, domestic services, security, club subscriptions	If paid by the employer on domestic services, on behalf of the employee, it is not taxable to the employee, however the employer is denied a deduction for the payment.
Telephone	Fully taxable to the employee at the employee's marginal rate of tax unless business related. In addition, the employee can claim a rebate for work related telephone costs.
Entertainment	If business entertainment expenditure is reimbursed to the employee by the employer, the reimbursement of the actual expenditure is not taxable to the employee. However the employer is denied a deduction for the entertainment expenses.
Cash allowances	All allowances paid by the employer are to be fully taxed at the employee's marginal rate of tax.

Note: An employee can make a written application to the IRC requesting a variation in the amount of salary or wages tax to be deducted to take into account the expected rebate on work related expenses.

2 Taxation of individuals

The following payments to employees, qualify to be taxed at the rate of 2%:

- a distribution from an authorised superannuation fund not exceeding the “prescribed sum” accrued to 31 December 1992, where paid on termination. A distribution of amounts accrued after 31 December 1992 up to the “prescribed sum” will be taxed at 2% in the following three circumstances:
 - A. where contributions have been made on behalf of the employee for 15 years
 - B. where the distribution is to an employee who is 50 years or older or who is subject to enforced early retirement, provided, in either case, contributions have been made for not less than seven years
 - C. where the distribution is made as a result of the death or disablement of the employee.
- a pay-out of long service leave, where paid on termination to an employee who has completed a minimum of 15 years of continuous service. Where the service is not less than nine years and not greater than 15 years the rate of tax is 8%. Where the service is not less than five years and not greater than nine years, the long service leave entitlement must not exceed six months for 15 years of service.



2 Taxation of individuals

Social security payments

An employer of 15 or more persons must register with an authorised superannuation fund, unless operating in an exempt industry (currently certain agricultural sectors). Membership is compulsory for PNG citizens who are continuously employed for three months, and, is voluntary for non-citizens.

Compulsory contributions are remitted by the employer at the following rates, as a percentage of gross basic salary (excluding overtime, bonus and commission):

- 6.0% – employee contributions
- 8.4% – employer contributions.

Superannuation

Distributions from authorised superannuation funds (other than the employee's own contributions) are taxed at the employee's marginal rate unless the distribution to the employee qualifies for concessional taxation.

Concessional taxation is based on years of membership of the fund. The taxation of those distributions which are not subject to tax at 2% may still be subject to concessional taxation as set out in the following table:

Years of membership of a fund	Less than 5 years	Not less than 5 years and not greater than 9 years	Not less than 9 years and not greater than 15 years
Rate of tax	Marginal rate	The lesser of 15% or the marginal rate of tax	The lesser of 8% or the marginal rate of tax

Retirement savings accounts

Retirement savings accounts (RSA) enjoy concessional tax treatment, with the maximum balance for an RSA currently being K250,000. Where there is a withdrawal from an RSA in excess of the prescribed limits the tax exemption on earnings from the RSA will not be affected. Excess withdrawals are taxed at 30%.

Redundancy scheme

A reduced tax rate may apply to redundancy payments to employees provided the redundancy scheme is an approved redundancy scheme (ARS). To qualify as an ARS, a number of conditions need to be satisfied, including the redundancy of at least 30 employees.

The tax charged on redundancy payments under an ARS will be at a rate of 15% up to a prescribed limit and the amount above the limit taxed at the employee's marginal tax rate. The limit is the lesser of K50,000 and the amount calculated applying the following formula: $K5,000 + (K2,000 \times \text{years of service})$.

Provisional tax

Provisional tax is levied on non-salary or wages income to ensure that, as far as possible, all income is taxed in the year in which it is earned.

Every taxpayer who earns in excess of K100 from non-salary or wages sources has a liability to pay provisional tax. Provisional tax is normally calculated as being equal to the income tax assessed for the preceding year but can be varied to a lesser amount if an application is lodged with the IRC prior to the due date for payment. The tax is payable no earlier than 30 September of the year of income.

2 Taxation of individuals

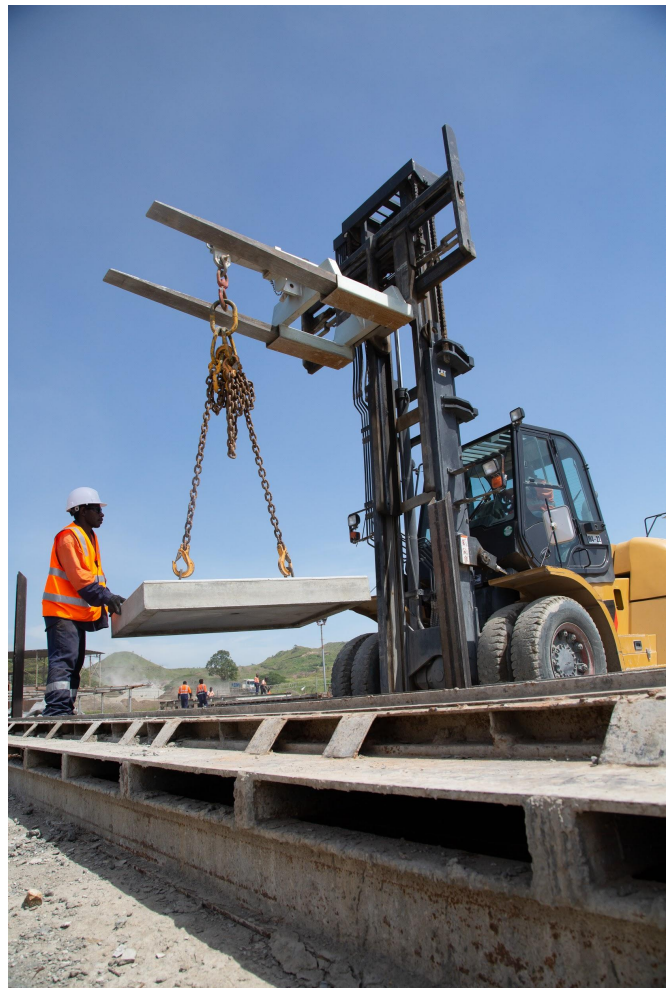
Responsibility for paying salary or wages tax

Employers are responsible for paying the salary or wages tax liabilities of their employees. Failure to do so by the prescribed due date (the seventh day of the month following that in which the salary was paid) will result in penalties being levied.

Company directors are personally liable for failing to ensure their company complies with its salary or wages tax obligations. Directors are potentially liable for a penalty equal to the amount of salary or wages tax that the company ought to have remitted to the IRC.

Small business tax

A small business operated by an individual which has an annual turnover of less than K250,000 is liable to pay tax on a quarterly basis at the rate of 2% of turnover. These small businesses may elect to be either in the standard tax system or in the small business tax regime. Where the turnover of the small business is less than K70,000 per annum, the business is classified as a micro business and the tax liability is limited to an annual tax of K250.





3

Taxation of companies

3 Taxation of companies

Financial period

All taxpayers must lodge their tax returns based on a 31 December year end unless they have approval from the IRC to adopt a substituted balance date.

Company tax rates

Company tax rates do not distinguish between public and private companies. The rates are:

Resident companies generally	30%
Non-resident companies generally	48%

Resident companies are also liable to pay dividend withholding tax (DWT) at the rate of 15% bringing the effective rate of tax on distributed profits of resident companies to 40.5%. DWT is payable on:

- dividends paid by the company to a resident individual, to a resident trust estate and to a non-resident
- certain deemed dividends.



Calculation of taxable income

Whilst there are special rules for certain companies including life assurance companies, non-resident insurers, mining, petroleum and gas projects and shipowners, taxable income generally corresponds to accounting income. However, there are important exceptions, the major areas being:

- depreciation (IRC specified rates)
- initial year accelerated depreciation
- accelerated depreciation for manufacturers
- exchange gains and losses (must be realised and either be on revenue account or relate to foreign currency debt)
- the deduction for employer's contributions to a superannuation fund is limited to 15% of an employee's fully taxed salary or wages. The fund must be resident in PNG and be authorised by the Bank of PNG for this amount to be deductible
- bad debts (must be written off in a year)
- borrowing expenses (amortised over a maximum period of five years)
- entertainment expenses are non-deductible except in limited circumstances
- interest expense is deductible subject to thin capitalisation rules
- management fees (restricted within certain limits)
- provisions and reserves for future expenditure are not allowable, e.g. provisions for holiday pay, long service leave and airfares
- double deductions are allowed for certain types of expenditure.

Exempt income

This is covered under "Other incentives" (see Chapter 10).

Losses

Taxpayers may offset trading losses (other than primary production losses and resource project losses) against all income received in the same accounting period, or carry forward trading losses for offset against future trading profits for a period of seven years. Taxpayers may not carry back losses against prior years' profits. The carry-forward of losses is subject to a 50% or more continuity of shareholding test and a continuity of business test where there is a breach of the ownership test.

3 Taxation of companies

Overseas losses

Losses incurred in deriving income from a source outside PNG are not deductible from PNG source income. In practice overseas losses may be carried forward for up to seven years to be offset only against overseas income.

Absence of grouping provisions

Companies are assessed to income tax on an individual basis. There is no provision to group income or offset losses of associated companies.

Company amalgamations

Under the Companies Act 1997, two or more companies may amalgamate. The taxation implications upon amalgamation are summarised below:

- cancellation of shares upon amalgamation constitutes a deemed disposal by the shareholder immediately prior to amalgamation for a consideration equal to cost or in the case of shares held as trading stock, either cost or market selling value
- no restriction on deductions allowable for bad debts
- consolidation of exploration costs and capital development costs incurred by resource companies
- consolidation of accrued income and expenditure, trading stock, assets (other than depreciable assets) and liabilities to be recorded at original cost in the books of the amalgamated entity
- depreciable assets to be recorded at the written down value in the books of the amalgamated entity
- consolidation of losses carried forward in the amalgamated entity, subject to the 50% continuity of ownership test
- transfer of profits will not constitute payment of a dividend
- no restriction on transfer of credits in respect of prescribed infrastructure developments.

Dividend payments and deemed dividends

“Dividend” is defined in broad terms and includes most payments or distributions by a company to a shareholder in that capacity.

Dividends derived by resident individuals and resident trust estates which have been subject to dividend withholding tax are exempt from further taxation. This means dividend withholding tax is a final tax for resident individuals and resident trust estates.

There is generally no tax on the undistributed profits of an operating company, nor any requirement to distribute a proportion of profits. However, a dividend may be deemed to arise where:

- a loan or other benefit is granted by a private company to a shareholder or associated person
- a liquidator makes a distribution from revenue reserves
- an overseas investment is made on cessation or change of business
- a company dormant for three years holds 75% of assets overseas
- shares are sold as part of a tax avoidance scheme.

Dividend rebate

Resident companies receive a full rebate of income tax on net dividend income included in taxable income so that, in effect, no income tax is paid on dividends.

3 Taxation of companies

Provisional tax

Corporate income tax is collected under a provisional tax system. Under this system, tax is paid in respect of a company's current year profits (i.e. payments made in 2020 are in respect of the year ending 31 December 2020). Provisional tax is imposed by assessment issued by the IRC based on the last return assessed.

In the event that no tax was payable on the prior year return, the Commissioner General has the right to estimate the amount of tax that he believes should be paid.

Provisional tax is payable in three equal instalments by 30 April, 31 July and 31 October.

Applications may be made to reduce provisional tax assessed if the tax due for the year in question is expected to be lower than the provisional tax assessed. Applications to vary the provisional tax liability must be lodged with the IRC on or before 31 October in the relevant year.

Where estimated provisional tax is less than 75% of the income tax ultimately assessed, additional tax may be levied. The additional tax is calculated at a flat rate of 20%, based on the difference between the estimate lodged and the provisional tax originally determined, or the actual balance of tax payable, whichever is lesser. The Commissioner General has the discretion to remit additional tax. A company is not required to increase the amount of provisional tax imposed by the IRC.



4

Mining,
petroleum and
gas operations

4 Mining, petroleum and gas operations

A single tax regime covers all three industries. Resource projects are assessed on a project basis such that losses from one project cannot be claimed against other income derived in respect of another project.

Income tax rates – Mining companies

The corporate tax rate applicable to resident and non-resident mining companies is 30%.

Dividend withholding tax at the rate of 15% is payable on dividends paid by resident companies carrying on mining operations.

Interest income earned prior to the commencement of commercial operations is not taxed but instead reduces “Allowable Capital Expenditure” relating to that project. Interest and other income earned by an exploration company is generally not taxed but is instead offset against carry forward exploration expenditure. Where the interest income is exempt then this income is not applied to reduce exploration expenditure.

Income tax rates – Petroleum companies

The rate of income tax applicable to petroleum operations is 30%. The rate applies to both resident and non-resident companies.

Dividend withholding tax at the rate of 15% is payable on dividends paid by resident companies carrying on petroleum operations.

Income tax rates – Gas companies

The rate applicable to gas operations is 30%. The rate applies to resident and non-resident companies.

Dividend withholding tax at the rate of 15% is payable on dividends paid by resident companies carrying on gas operations.

Gas companies versus petroleum companies

It is important to note the point at which a petroleum project converts into a gas project for tax purposes. Under the oil and gas regulations, a project with a gas to oil sold ratio not exceeding 5,000 cubic feet of gas per stock tank barrels of oil sold is a petroleum project. However once this threshold is exceeded and the project is subject to a gas agreement, the project will become a designated gas project and is subject to the tax provisions specific to gas projects.

Advance payment tax

Mining, petroleum and gas companies are required to estimate their tax liability by 31 March of each year and submit this to the IRC. Tax on this estimate is then payable in three instalments on 30 April, 31 July and 31 October (with re-estimates being made at the time of the second and third instalments where appropriate).

Additional profits tax

Additional profits tax (APT) applies to all resource projects. Broadly, APT is imposed on the basis of cash flow. APT potentially applies to a resource project in the year in which the accumulated value of “net cash receipts” becomes positive.

4 Mining, petroleum and gas operations

Notional tax

The notional tax rules apply to non-mining income of a company which has an interest in a resource development licence but does not derive any income from mining operations.

Under the notional tax system, corporate income tax is payable a year in arrears. This is usually estimated by uplifting by 5% the taxable income reported in the last tax return lodged. Tax on this estimate is then payable in three instalments on 31 March, 30 June and 30 September (with an option to vary and pay the tax in full at the time of the first instalment).

Deductions for mining, petroleum and gas operations

Special provisions apply to determine allowable deductions for allowable exploration expenditure (AEE) and development or allowable capital expenditure (ACE).

Expenditure incurred during the exploration phase of a project (i.e. under an exploration licence) is categorised as exploration expenditure (EE). EE incurred up to 20 years prior to the issue of a development licence qualifies as AEE. Exploration expenditure, including capital expenditure, incurred after the issue of a development licence is categorised as ACE.

Capital expenditure incurred after a development licence has been issued is categorised as ACE.

The amount of the deduction for AEE is limited to the amount of income remaining after deducting all other deductions, other than the deduction for ACE. In other words, the AEE deduction cannot be used to create a tax loss.

The amount of the deduction for ACE is limited to the amount of income remaining after deducting all other deductions. In other words the ACE deduction cannot be used to create a tax loss.

Exploration expenditure incurred by an entity within a wholly owned group of companies may be pooled and deducted against the income of a producing project in which a member of that wholly owned group of companies has an interest. Specific deductions are available for rehabilitation costs incurred in connection with a resource project. Those provisions also provide a mechanism for the transfer of rehabilitation expenditure sourced tax losses to be deducted against the income of another resource project.





5

Taxation of other entities

5 Taxation of other entities

Partnerships

A partnership is defined to include any association of persons in receipt of income jointly. The members of a partnership include their individual share of the profit or loss of the partnership in their own tax returns. The partnership itself is not subject to tax, although it is required to file a tax return.

Joint ventures

Unincorporated joint ventures are permitted to carry on mining, gas and petroleum operations and the respective joint venture partners are assessed on their individual share of income on a project basis.

Joint venture operators of a resource project are required to submit a “consolidated financial statement” for the joint venture as a whole, within two months of the end of the year of income. This consolidated financial statement must list details of all expenditure incurred during the year. Further, each joint venture partner will be required to reconcile their tax return to the consolidated financial statement.

The joint venture itself is not subject to tax and is not required to file an income tax return.

Trusts

A trustee of a resident trust estate is taxed on the net income of the trust estate at the rate of 30%.

The beneficiaries of a trust estate are also subject to income tax on their entitlement to the net income.

Unit trusts

A unit trust is taxed as a normal trust (see above) unless it satisfies the following requirements:

- 95% of the units are able to be redeemed or sold back to the trust
- it is resident in PNG
- it acts only as an investment vehicle
- it has a widely spread portfolio style of investments with no more than 10% of its investments being in any one company or debtor (other than the PNG Government)
- it complies with conditions prescribed in the Regulations concerning number of unit holders, dispersal of ownership of units and public trading in units
- qualifying unit trusts are taxed at the rate of 30%
- distributions of income to unit holders are exempt from income tax.



5 Taxation of other entities

Property unit trusts

Property unit trusts (“PUT”) are taxed at the rate of 30% on the net income of the trust. The tax is payable by the trustee. Distributions to beneficiaries are exempt from income tax. A PUT must satisfy similar requirements to those imposed on unit trusts if it is to be taxed as a PUT. A PUT may also invest in property located outside PNG.

Landowner resources trusts

Where interests in various natural resources projects are held in trust for landowners, a trust may be approved by the Minister of Finance to be a landowner resources trust. Net income derived by the landowner resources trust is taxed at the rate of 30%. The tax is payable by the trustee.

Distributions of income and capital by a landowner resources trust to its beneficiaries are exempt from income tax in the hands of the beneficiaries.

Superannuation funds

A superannuation fund is resident if it is established or managed in PNG.

The taxable income of an authorised and resident superannuation fund is subject to tax at the rate of 25%.

Dividends paid to a superannuation fund qualify for the dividend rebate (see Chapter 3) and are exempt from dividend withholding tax if the fund is an authorised fund.

Where an employer’s contributions to a superannuation fund exceed 15% of an employee’s fully taxed salary or wages, the excess contribution is included as assessable income of the superannuation fund.





6

Manufacturing
industry
incentives

6 Manufacturing industry incentives

Accelerated depreciation for manufacturers

Industrial plant not previously used in PNG is eligible for accelerated depreciation of up to 100% of cost. The claim for accelerated depreciation cannot take the company into a tax loss (but can be carried forward and claimed in a subsequent year).

To qualify, the plant must have an effective life for tax purposes exceeding five years and must be used by the taxpayer or any other person (e.g. a lessee) in a manufacturing process.

Expenditure on new buildings for the housing of industrial plant, or for the storing of raw materials or finished products also qualifies for the 100% accelerated depreciation.

An accelerated depreciation deduction of 20% of the cost of most other new items of plant and equipment (with a life exceeding five years) used by a manufacturer is available.

Double deduction for export market development costs

Expenditure on export market development for goods manufactured in PNG qualifies for a double deduction. Qualifying expenditure includes overseas publicity and advertising, market research, tender preparation, samples, trade fair expenses, overseas sales office expenses and certain travel costs.

The tax saving resulting from the allowance of the deduction may not exceed 75% of the expenditure actually incurred.

Export incentives for manufacturers

Taxpayers who export certain qualifying goods manufactured by them in PNG are entitled to an income tax exemption of 100% of export sales made prior to the last day of the third year following the date export sales were first made. For the following three years, the excess of export sales over average export sales of the previous three years is exempt.

There is no tax deduction available for expenses incurred in deriving this exempt income (i.e. it is the profits from export sales that are exempt).

The manufacturing export incentive was abolished from 1 January 2015 except in respect of goods which qualified for the incentive prior to 1 January 2015.

Goods which qualify for the exemption include:

• Activated carbon	• Instant full cream milk
• Artefacts	• Instant noodles
• Beverages ready for consumption	• Jewellery
• Biscuits	• Foam products
• Canned fruit and vegetables	• Founded and manufactured metal products
• Canned, loined and smoked fish	• Livestock feeds
• Cement and concrete products	• Matches
• Ceramics	• Motor vehicles
• Chopsticks	• Non-dairy creamer
• Cigarettes	• Paint
• Clothing and manufactured textiles	• Paper products
• Confectionery	• Plastic products
• Dairy products	• Powdered cocoa beverages
• Dry cell batteries	• Powdered coconut milk
• Electrical appliances	• Processed and canned meat products
• Essential oils, oleoresins	• Processed ginger
• Fabricated steel	• Refined petroleum
• Fibreglass products	• Rubber products
• Fishing nets	• Sawn timber, mouldings, plywood and laminated products
• Flexible packaging materials	• Ship and boat building and repairing
• Flour	• Soaps
• Glass products	• Treated and processed crocodile skins
• Hand tools	• Wood pulp
• Industrial and medical gases	• Wooden furniture components and doors
• Instant coffee	

6 Manufacturing industry incentives

The exemption also applies to any new manufactured products approved by the Internal Revenue Commission.

Wages subsidy for manufacturers

Companies manufacturing new products may receive a taxable wages subsidy payment for up to five years. The subsidy is based on a percentage of the relevant minimum wage for each full time citizen employee as follows:

1 st year of subsidy	40%	4 th year of subsidy	15%
2 nd year of subsidy	30%	5 th year of subsidy	10%
3 rd year of subsidy	20%		

To qualify, the company must obtain a New Product Manufacturing Certificate from the IRC. The subsidy is not available for products which receive tariff protection, or quota protection without import parity pricing.





7

Agriculture,
fishing
and tourism

7 Agriculture, fishing and tourism

Accelerated depreciation

Expenditure on new plant or articles:

- used directly for the purposes of agricultural production
- used solely for commercial fishing activities of residents
- boats and ships (and ancillary equipment) used solely as dive boats or used by a person carrying on a business as an accredited scuba diving/snorkelling tour operator
- qualifies for the 100% accelerated depreciation deduction.

An accelerated depreciation deduction of 20% of the cost of most other new items of plant and equipment (with a life exceeding five years) used for the purposes of agricultural production is also available. This allows an accelerated deduction for items of plant or articles which are not used directly in agricultural production.

An initial year depreciation deduction of 55% can be claimed in respect of plant acquired by hotels, other short-stay accommodation facilities and restaurants.

Primary production

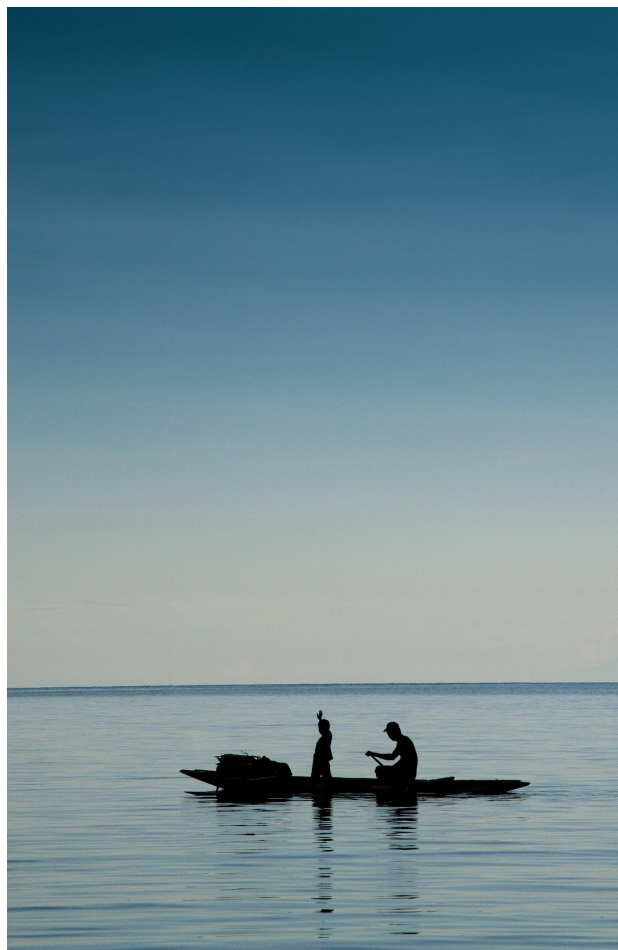
Outright deductions allowed for certain capital expenditure include clearing or preparing or conserving land for agriculture, the eradication of pests, certain labourers' accommodation and for the conservation and conveyance of water.

Losses incurred in carrying on a primary production business can be carried forward indefinitely.

Major new primary production projects with a minimum investment of K1 million undertaken by a company which commenced in the period 1 January 2004 to 31 December 2011 have a tax rate of 20% from the date of commencement of construction to the end of the tenth full tax year after the commencement.

A 150% deduction is available for expenditure on services provided free of charge to smallholder growers including the provision of advice and training and technical assistance in relation to their primary production to assist growers with production, processing, packaging and marketing problems. To qualify, the expenditure must be incurred under an Approved Agricultural Production Extension Services Plan.

See also "Infrastructure credits" in Chapter 8.



7 Agriculture, fishing and tourism

Investment in primary production

A primary production company which has incurred primary production development expenditure (defined to include the cost of assets used for agricultural production) may surrender its available deduction in favour of its shareholders. The amount surrendered to each shareholder is in proportion to the respective amounts of their paid up capital. The total deduction available to a shareholder may not exceed the total amount paid on their shares. A shareholder may waive their entitlement if they so wish.

Investment in tourism

Income derived by a taxpayer from a new large scale tourism facility or a substantially improved tourist accommodation facility where construction commenced between 1 January 2007 and 31 December 2011 will have a tax rate of 20% for the first year in which such income is derived and for a maximum of 14 years thereafter.

Other conditions the taxpayer must satisfy to qualify include the requirement for expenditure on a hotel, motel, ship, inn or other short term accommodation in PNG that provides 100 or more rooms for accommodation to be US\$7 million or more and registration with the IRC.

See also “Infrastructure credits” in Chapter 8.

Double deduction for export market development costs

The double deduction for expenditure incurred on export market development expenditure is also available in respect of outgoings incurred primarily for the purpose of seeking opportunities, or creating and increasing demand for the development of tourism within PNG.





8

Infrastructure
credits

8 Infrastructure credits

Prescribed infrastructure development credits

A tax credit is available to taxpayers engaged in mining, petroleum or gas operations, taxpayers engaged in primary production and taxpayers engaged in tourism.

The credit operates by deeming relevant eligible expenditure to be tax paid by the particular taxpayer.

The maximum amount of credit that can be claimed is limited to the lesser of the amount actually spent and:

- in the case of taxpayers engaged in tourism the amount of tax payable or 1.5% of the assessable income for the year
- in the case of taxpayers engaged in primary production the amount of tax payable or 1.5% of the assessable income for the year
- in the case of taxpayers engaged in mining, petroleum or gas operations the amount of tax payable or 0.75% of the assessable income for the year.

If a taxpayer's expenditure in a particular year is less than these limits, the excess can be carried forward for a period of two years.

A prescribed infrastructure development for resource projects and primary producers includes schools, aid posts, hospitals, roads and other capital asset as well as maintenance of these assets (where these are owned by the State). Any projects must be approved, beforehand, by the Department responsible for national planning matters and all subsequent expenditure must be certified by both the Department and the IRC as having been incurred.

Capital projects that are required to be built under a resource agreement are ineligible for the credit.

For the tourism industry, the infrastructure tax credit scheme only extends to those who qualify as large scale tourism investors (see Chapter 7 for more details).



Bank community service obligations

A licensed bank is entitled to a tax credit for specified expenditure incurred on developing banking facilities outside areas that are deemed to be already adequately supplied with banking facilities.

The credits range from K350,000 for developing a branch to K500 for the provision of an Electronic Funds Transfer Point of Sale (EFTPOS) service in an area outside an area adequately or moderately supplied with banking facilities.

Credits of K175,000 for each branch and K100,000 for each sub-branch are available where these are provided in an area that is moderately supplied with banking services. This tax credit scheme had application to 31 December 2017.



9

Regional
incentives

9 Regional incentives

Rural development incentive

Qualifying new businesses started in specified rural development areas (listed below) are exempt from income tax on their net income from carrying on a rural development industry for ten years after the year of commencement of business. Losses arising from these exempt activities are deductible against taxable income from other activities.

Businesses involved in the exploitation of non-renewable resources (mainly mining, petroleum and gas companies) are specifically excluded from the exemption.

Province	District
Central	Abau, Goilala
East New Britain	Pomio
East Sepik	Aitape, Ambunti, Angoram, Maprik
Eastern Highlands	Henganofi, Lufa, Okapa, Wonenara
Enga	Kandep, Lagaip, Wabag, Wapenamanda
Gulf	Kaintiba, Kikori
Madang	Bogia, Rai Coast, Ramu
Milne Bay	Losuia, Rabaraba
Morobe	Finschhafen, Kabwum, Kaiapit, Menyamya, Mumeng
Simbu	Gumine, Karimui
Southern Highlands	Ialibu, Kagua, Koroba, Nipa, Pangia, Tari
West New Britain	Kandrian, Lake Kapiago
West Sepik	Amanab, Lumi, Nuku, Telefomin,
Western	Lake Murray
Western Highlands	Jimi, Tambul





10

Other
incentives

10 Other incentives

Solar heating

Expenditure on the acquisition and installation of solar heating plant for use in deriving income is allowable as an outright deduction.



Exemption of certain interest income

Interest income received from a “long term bond” issued prior to 16 November 2004 is exempt from income tax. A “long term bond” is an approved fixed interest security issued by the PNG Government, or a resident corporation or society, with a maturity date of not less than five years after issue.

Interest income received from a foreign currency deposit which has been approved by the Bank of PNG is exempt from income tax.



11

Special
deductions
and restrictions

11 Special deductions and restrictions

Entertainment

With few exceptions, deductions are not allowable to the taxpayer for expenses incurred in providing entertainment by way of food, drink or recreation (including associated travel and accommodation).

The exceptions, where entertainment expenses may be deductible, include:

- entertainment provided by a taxpayer who is in the business of providing entertainment for payment (e.g. hoteliers)
- entertainment provided for the purposes of promoting or advertising a business or its goods or services to the general public
- entertainment provided in an 'in-house dining facility'
- entertainment provided at a seminar
- provision of food or drink to an employee pursuant to an industrial instrument or award relating to overtime
- gratuitous entertainment to members of the public who are sick, disabled, poor or otherwise disadvantaged.

Management fees

Management and technical fees paid to associates by taxpayers operating in PNG are tax deductible only to the extent of the greater of A or B, where A is:

- 2% of the assessable income derived from PNG sources by the taxpayer and B is:
- 2% of the total allowable deductions (excluding the management fees).

The restriction does not apply where the payment was made to a non-associated person or is not for the purpose of or does not have the effect of tax avoidance.

The restriction on deductibility applies to payments by both residents and non-residents.

Special rules apply to management and technical fees payable in respect of mining, petroleum and gas operations.

Exchange gains and losses

Realised exchange gains arising from foreign currency debts incurred or borrowings are assessable. Realised business related exchange losses on such debts or borrowings are deductible. Unrealised gains are not assessable and unrealised losses are not deductible.

Gifts and charitable donations

The following donations are specifically deductible:

- gifts of more than K50 of money, or property purchased by a company within the 12 months preceding the making of the gift, to a qualifying charitable body
- monetary gifts with a value of more than K50 made by a company to sporting bodies established in PNG
- gifts of money, or property purchased by a taxpayer in the 12 months immediately preceding the making of the gift to the Foundation for Law, Order and Justice
- a double deduction is allowed for gifts of money of more than K1,500, or property, made by a company to a trust for special law and order projects in PNG.

11 Special deductions and restrictions

Preliminary expenditure in connection with assets

Expenditure including interest incurred in constructing or acquiring an asset, is generally not deductible to the extent that it was incurred prior to the date on which assessable income is derived or the asset is first used for producing assessable income whichever is the later. This expenditure must be capitalised and is deemed to form part of the cost of the asset for the purpose of calculating depreciation.

Profits on leased assets

Where a leased asset has been acquired and subsequently disposed of for a consideration exceeding the cost of acquisition, the profit is assessable, to the extent the proceeds exceed the total amount of deductions previously allowed as lease payments plus any residual value payment made on expiry of the lease.

Interest and thin capitalisation rules

Interest on debt in excess of a prescribed debt equity ratio is non-deductible to the extent the interest is paid to a non-resident (including unrelated parties).

For resource companies the debt to equity ratio is 3:1 while all other taxpayers (except financial institutions) are subject to a 2:1 ratio.

Timber operations

Capital expenditure in connection with timber operations on access roads, port facilities, housing and welfare facilities, and structural improvements may be amortised over the lesser of the period of use of the relevant assets or 15 years.

Environmental protection and clean-up costs

Specific deduction provisions allow a deduction for environmental protection and clean-up costs. Those provisions also include a deduction for the costs incurred in preparing an environmental impact study over the lesser period of ten years or the life of the project being studied.





12

Compliance
reporting
system

12 Compliance reporting system

Local contractors in certain industries are covered by the business income withholding tax regime.

The industries affected include:

- building and construction
- joinery and cabinet making
- motor vehicle repairs
- road transport
- security.

The system also applies to non-work arrangements, such as hire or lease of equipment or other arrangements by which assessable income is derived.

Businesses affected are required to have a Certificate of Compliance and to produce it when entering into contracts with their customers. Payers are required to file an annual income reporting statement where they make an eligible payment of K5,000 or more in relation to one contract in the year of income in relation to one payee.

The payer is required to deduct business income withholding tax at the rate of 10% if the payee does not produce a Certificate of Compliance





13

Tax compliance
– key dates

13 Tax compliance – Key dates

The lodgement of returns of income and the procedures for assessment, objection, dispute, and payment are set out below:

Liability to lodge an income tax return	Any individual whose gross non salary or wages income exceeds K100 Any individual who runs a business or is engaged in a profession and whose gross income exceeds K100 All companies with income in excess of K2 All partnerships, trusts and superannuation funds
Lodgement (final date without penalty) when lodged by a registered tax agent	<ul style="list-style-type: none"> • 6 months after the end of the year of income for taxpayers in a tax payable position • 10 months after the end of the year income for taxpayers in a non-tax payable position
Otherwise	2 months after the end of year of income
Penalties for late lodgement of returns/late payment of taxes	The penalty for late lodgement of income tax returns is the higher of 100% of the tax assessable or K100 per month. The penalty for late payment of tax is 20% pa on the amount unpaid.
Assessment issued by IRC	Usually within 5 to 6 months of lodgement of the return
Payment of tax	Not less than 30 days after the date of assessment For individuals, if provisional tax is imposed the tax will not be payable before 30 September of the year of income for which the provisional tax is assessed.
Objection (protest)	Within 60 days of service of notice of assessment
Reference to Review Tribunal or National Court	Within 60 days of service of notice of disallowance of objection



14

Payments to
non-residents

14 Payments to non-residents

Dividends

Dividends, including those paid to residents, are generally subject to 15% dividend withholding tax. The withholding tax is a final tax for non-residents. The rate of dividend withholding tax may be reduced under the terms of a double tax treaty (see Chapter 15).

Interest

Where interest is paid or credited by any person to a non-resident, interest withholding tax must be deducted at the rate of 15%. The withholding tax is a final tax for non-residents. The rate of interest withholding tax may be reduced under the terms of a double tax treaty (see Chapter 15).

Royalties

Tax is imposed on royalties and similar payments made to non-residents who do not have a permanent establishment in PNG.

The tax must be withheld by the payer on behalf of the payee and remitted to the IRC.

The tax payable on royalties to a party who is not an 'associated person' is the lesser of:

- 48% of the net royalty, i.e. gross royalty, less applicable expenses
- 10% of the gross royalty.

Royalty payments to a non-resident 'associated person' are liable to a withholding tax of 30% of gross payments (subject to any double taxation agreement), with no option to adopt the net income basis.

The rate of royalty withholding tax may be reduced under the terms of a double tax treaty (see chapter 15).

The definition of "associated person" is detailed and widely drawn. Broadly, it encompasses relatives, partners, companies under effective common control, and related trust interests.

There is also a 5% withholding tax on mining, petroleum, timber and fishing royalties payable to landowners.

Management fees

A 17% withholding tax applies to management fees and technical fees paid to non-residents. The withholding tax only applies to the amount allowable as a tax deduction. Management fees paid to some jurisdictions may be exempt from management fee withholding tax under the terms of a double tax treaty (see Chapter 15).

The tax must be remitted to the IRC within 21 days after the month in which the management fees are paid or credited.

Foreign contractors

All non-resident contractors, other than individuals deriving salary or wages income, undertaking installation and construction projects or providing professional and consultancy services in PNG, and equipment lease and charter payments to non-residents are subject to foreign contractor withholding tax of 15% of gross income. Individuals will generally be considered as employees and be subject to salary and wages tax.

The PNG contracting entity must provide the IRC with a copy of a relevant contract within 14 days of its signing. Where tax is withheld from the foreign contractor the deductions are to be remitted to the IRC within 21 days after the end of the month in which the payment was made.

Where the foreign contractor is a resident of a jurisdiction which has a double tax treaty with PNG (see Chapter 15 for details) the income derived by the foreign contractor may be exempt from PNG tax.

14 Payments to non-residents

Leases to non-resident associates

Lease payments made to a non-resident associate for the lease of equipment may not be fully deductible. The deduction is limited to an amount equivalent to the depreciation on a diminishing value basis or, at the option of the taxpayer, prime cost basis, and an amount for interest on a notional loan at commercial rates had the resident taxpayer purchased that asset.

Non-resident insurers

All non-resident insurers who undertake insurance contracts where the insured property is situated in PNG or the insured event can happen only in PNG are subject to tax. The tax is calculated on a deemed taxable income equal to 10% of the total amount of premiums, which is taxed at the non-resident tax rates of 48% (companies) or 30% (unincorporated associations). The tax is collected on a withholding basis and is remitted on monthly basis within 21 days after the end of the month in which payment was made.

Overseas shipping

Income derived by overseas shippers or charterers carrying passengers, livestock, mail or goods out of PNG is taxable in PNG.

The tax is calculated on a deemed taxable income equal to 5% of the gross income which is taxed at the non-resident rate of 48% in the case of companies.

The withholding tax is not payable if the home country of the ship owner would not impose tax, in similar circumstances, on PNG-owned ships.



14 Payments to non-residents

Tax clearance and foreign exchange procedures

Any person (including a company) wishing to remit a sum or sums exceeding K500,000 per annum from PNG to any country must generally obtain a tax clearance certificate before the authorised dealers (i.e. the relevant trading banks) will grant approval for the remittance. Exceptions to this rule are transfers of funds which are trade related involving the physical movement of goods.

In dealings with scheduled countries (see below) any remittance of funds from PNG must be cleared, even where sums do not exceed K500,000 per annum.

The scheduled countries are: Bahamas, Bermuda, Solomon Islands, British Channel Islands, British Virgin Islands, Gibraltar, Grenada, Hong Kong, The Isle of Man, Liberia, Liechtenstein, Luxembourg, Nauru, Netherlands Antilles, Norfolk Island, Panama, Switzerland, Tonga and Vanuatu.

Generally, tax clearance certificates can be readily obtained, provided the IRC believes a tax liability will not be avoided or evaded if a clearance is given and provided all filing and other compliance obligations are up to date.

Under the current exchange control regime, authority to grant exchange control approval for remittance of funds outside PNG has been delegated to the trading banks. In this regard the trading banks can approve the remittance for payments such as the transfer of surplus funds, dividends, management fees, royalty payments, sundry payments such as school fees, travel allowances and consultants' fees. In addition, Bank of PNG approval is not required for most foreign investment proposals.

Transfer pricing

Where transactions involving non-residents are not at arm's length, the IRC may impose an arm's length consideration for income tax purposes and determine the source of any income arising from such transactions.

Corporate taxpayers (including companies, superannuation funds, associates and unit trusts) that have transactions or dealings with international related parties that exceed K100,000 in an income year, or have aggregated loan balances with international related parties in excess of K2,000,000 at any time during an income year, are required to prepare and lodge an international dealings schedule ("IDS") with their income tax return for that year of income.

The IDS requires disclosures to be made of the nature of the transactions with international related parties, the underlying transfer pricing methodologies followed to determine transfer prices and the nature of documentation supporting those pricing methodologies.



15

Double
tax treaties

15 Double tax treaties

Double tax treaties have been entered into with Australia, Canada, China, Fiji, Germany, Indonesia, Korea, Malaysia, New Zealand, Singapore, and the United Kingdom. We understand that Germany has not yet ratified the treaty. PNG has negotiated a double taxation treaty with Thailand which has not yet been ratified in PNG.

Rates of tax imposed on payments to non-residents and the liability of non-residents to PNG tax may be affected by a double tax treaty and these rates are summarised below. PNG domestic legislation provides an exemption from withholding tax for interest and dividends in certain circumstances. The higher rates quoted are the maximum rates allowable under the treaties, however the domestic exemption may still apply in some circumstances.

Foreign contractor withholding tax

The application of a double tax treaty may result in a foreign contractor operating in PNG being exempt from PNG income tax if the foreign contractor does not have a permanent establishment in PNG (see Chapter 14 for background).

Management fee withholding tax

Some of PNG's double tax treaties also operate to exempt the application of management fee withholding taxes chargeable on management fees paid to certain jurisdictions such as Australia and Singapore.

Recipient	Interest (1)	Dividends (2)	Royalties (3)	Technical fees
	%	%	%	%
Non-treaty				
Resident	0/15	15	0/5	0
Non-resident corporations and individuals	0/15	15	10/30	17
Treaty				
Australia	10	15	10	0
Canada	10	15	10	0
New Zealand	10	15	10	0
China	10	15	10	0
Fiji	10	15	15	15
Indonesia	10	15	10	10
Korea Republic	10	15	10	0
Malaysia	15	15	10	10
Singapore	10	15	10	0
United Kingdom	10	15	10	10

Notes on the above withholding tax rates

- There is no withholding tax on interest when:
 - interest is paid or credited to a licensed financial institution in PNG, the Bank of PNG, or the State
 - the interest income is otherwise exempt income in the hands of the recipient (including interest derived from an onshore foreign currency account, interest derived from a "long term bond" or interest derived by a person whose income is exempt from tax).
- A royalty paid to a non-resident associate of the payee will suffer a 30% withholding tax, where the non-resident is not an associate of the payee the withholding tax rate will be 10% (or 48% of the taxable income derived from the royalty if the non-resident chooses to lodge an income tax return in PNG).



16

Goods and
services tax

16 Goods and services tax

Rate of GST

Goods and services tax (GST) is imposed at the rate of 10% and applies to the majority of goods and services supplied in PNG as well as to most imported goods and services.

Registration

Any person who carries on an activity, continuously or regularly, involving the supply of goods or services to another person for a consideration, is required to register if those supplies (not being exempt supplies) exceed or are expected to exceed K250,000 in any 12 month period.

Specified groups of companies may elect to be registered as one entity. Equally a company may separately register its various branches or divisions.

Output GST (GST on sales)

There are three categories of sales:

1. Standard sales

This applies to the majority of goods and services sold by a registered entity. Input tax relating to these sales is fully creditable against output GST (subject to a few exceptions).

2. Zero-rated sales

Some goods and services will be subject to a zero rate of GST. These include:

- exported goods and services
- consumable goods for consumption outside PNG (e.g. aircraft and ship supplies)
- the supply of prescription drugs, medical prostheses and prescription lenses
- the supply of unprocessed crude oil from sources in PNG is zero rated for GST purposes
- the supply of accommodation and travel within PNG to a person who purchases the supply while they are outside PNG is zero rated for GST purposes.

Input tax relating to these sales is fully deductible against output GST (subject to a few exceptions).

3. Exempt sales

There is a fairly small category of exempt sales which include:

- the supply of financial services
- the supply of educational services
- the supply of medical services
- the supply of housing or a motor vehicle to an employee as part of an employment contract.

In contrast to zero-rated sales, a registered entity making exempt sales is not entitled to any deduction for input taxes. Where an entity makes both exempt and taxable sales, the deduction for input taxes has to be apportioned.

Input GST (GST on purchases)

GST is imposed on virtually all goods and services (with the exception of those treated as zero-rated or exempt sales (see above)). There are three broad categories:

1. Imported goods

GST is imposed on the CIF value of the goods including, where applicable, any customs duty and excise. The GST is collected by PNG Customs.

2. Imported services

Where services are performed outside PNG for the use or benefit within PNG of a person resident in PNG, the recipient of the services is required to impose and remit the GST to the IRC on a reverse charge basis.

The GST paid in this way is also eligible as an input credit, so the majority of businesses are unaffected by this requirement; only businesses making exempt sales are ineligible to claim an input credit.

3. Locally purchased goods and services

GST is charged by the supplier, where the supplier is registered for GST purposes.

16 Goods and services tax

Import GST deferral scheme

An import GST deferral scheme may be operated by the Commissioner General.

Under a GST deferral scheme, the payment of the GST on importation is deferred until the time the taxpayer lodges its next GST return, and as an input tax credit for the same amount is generally allowed in the same return, there is no cash tax payable.

Limited information has been provided on who is eligible to participate in the scheme and the procedures for any approvals by the IRC. Importers should seek advice on the ability to access this scheme.

Accounting for GST

As a rule, GST must be accounted for on an accruals basis. However, registered entities whose turnover did not exceed K1,250,000 in the preceding 12 months or whose turnover is not likely to exceed K1,250,000 in the next 12 months may account for GST on a payments basis subject to IRC approval.

GST on the sale of goods and services must be recognised at the earlier of when the invoice is issued or when payment is received. Separate rules apply to the sale of goods and services on hire purchase, lay-by or over a period of time. In these instances, GST is generally accounted for on a pro-rata basis.

GST on the purchase of goods and services can only be recognised at the time of receiving an invoice, except where the invoice covers a range of periodic payments in which case the GST is pro-rated. To be able to claim the input credit the purchaser must have a valid “tax invoice” relating to the purchase. The format of the tax invoice is specifically covered by the GST legislation.

One important exception for which there is no input deduction (apart from those relating to exempt sales) is the purchase or hire of a motor vehicle designed to carry less than one tonne or fewer than nine passengers. There is no input credit available on these transactions, unless the purchaser is in the business of buying and selling, or renting motor vehicles.

Agriculture and second-hand goods

Special rules apply where a registered entity purchases primary produce produced by the vendor in PNG or second-hand goods and the producer is not registered for GST.

In these circumstances, the purchaser of primary produce is generally able to claim an input credit for a prescribed percentage of the amount paid. The purchaser of second-hand goods can claim an input credit for the “tax fraction” (i.e. 1/11th) of the amount paid.

Goods and services tax – Director liability

The GST Act contains provisions which hold company directors personally liable for failing to ensure their company complies with its GST obligations. Directors are potentially liable for a penalty equal to the amount of GST that the company ought to have remitted to the IRC.



17

Other taxes

17 Other taxes

Interest withholding tax

Interest withholding tax of 15% must be deducted from any interest paid by a financial institution, the Bank of PNG (Central Bank) or a company to a person resident in PNG.

Withholding tax deducted is creditable against tax ultimately payable by a resident recipient on that income.

Customs duties

Customs duties are imposed on the CIF value of imports at varying rates. With the introduction of GST, the majority of manufacturing inputs attract no duty. Duty is now primarily imposed on items which are produced locally in PNG and on motor vehicles.

Duty can be waived where goods are to be imported and re-exported within 12 months (or some other period as approved by the Collector of Customs) subject to the approval of the Collector of Customs. A bond or bank guarantee must be provided.

Excise duties

Excise, at varying rates, is imposed on certain locally manufactured and imported goods (primarily alcohol, tobacco and fuel products) as well as on goods deemed to be "luxury" items.

Stamp duty

The National Government imposes duties on documents evidencing certain transactions, including the transfer of real property located in PNG, the transfer of shares in certain landholding corporations and the leasing of office space or heavy equipment by a non-resident.

Documents executed outside of PNG may still be subject to stamp duty if the document relates to property or things to be done in PNG.

The following are the maximum rates of duty on various transactions:

The following are the maximum rates of duty on various transactions:

	Value K	Percentage of Value
Conveyances of real property (including shares in certain landholding corporations)	In excess of K140,000	5%
Transfers or assignments of leases of land other than mining and petroleum leases	In excess of K140,000	5%
Transfers of mining and petroleum leases		2%
Lease documents		
Lease for a definite term of less than 5 years		0.4%
Lease for a definite term of 5 years or more		1%
(duty based on total rental for period leases)		
Share and stock transfers		1%
Transfers or assignments of mineral and petroleum exploration licences and on transfer of mining or petroleum information		2% or K20,000

Subject to certain conditions, the transfer of land or other dutiable property as the result of a company amalgamation is exempt from full rates of duty. The amount of stamp duty is restricted to K600 per transaction up to a maximum of K12,500 per amalgamation.

17 Other taxes

Stamp duty relief

An exemption from full rates of stamp duty is available where the dutiable property is transferred between a PNG group of companies (i.e. a PNG company and its wholly owned subsidiary). This relief is only available upon application to the IRC prior to the transaction being made.

Timber export duty

An export tax on logs (excluding plantation logs and sawn timber) is applied at a varying rate according to the FOB price of the logs.

Spice levies

The Spice Industry Act 1989 imposes a spice export levy which may be reduced or suspended by the Spice Industry Board. A spice stabilisation fund levy may also be imposed by the Spice Industry Board.

Gift duty

There is no gift duty as such. However, the Stamp Duties Act may levy stamp duty on documents if there is a gift or if consideration is inadequate. The maximum duty is 5% of value.

Probate duty

There is no probate duty.

Land tax

The power to levy land tax is vested exclusively with the Provincial Governments. In the PNG context, land tax is difficult to implement and faces major geographical and social problems.

Capital gains tax

There is no general capital gains tax in PNG. However, profits arising on the sale of property acquired for the purpose of resale at a profit, or from the carrying out of a profit-making scheme, are fully taxable as ordinary income.

Gaming machine tax

The Gaming Control Act provides for the imposition of a gaming machine tax that is payable by the operator on the “taxable gross profit” of a site.

For more information on this publication, please contact:

Port Moresby

PO Box 484
PwC Haus, Level 6
Harbour City, Konedobu

Telephone:
(675) 321 1500

Facsimile:
(675) 321 1428

Partners

Jonathan Seeto
jonathan.seeto@pwc.com

Peter Buchholz
peter.l.buchholz@pwc.com

Peter Burnie
peter.burnie@pwc.com

Jason Ellis
jason.b.ellis@pwc.com

Jonathan Grasso
jonathan.a.grasso@pwc.com

Chris Hansor
christopher.hansor@pwc.com

Ryan Jones
ryan.a.jones@pwc.com

Alison Judd
alison.judd@pwc.com

Lae

PO Box 451
BSP Lae Commercial Centre, Level 1
Markham Road

Telephone:
(675) 472 2644

Principal

Stephen Beach
stephen.beach@pwc.com

www.pwc.com/pg