

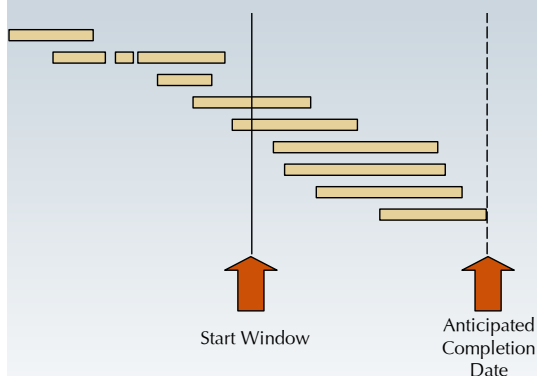
Windows Delay Analysis

The key to this assignment was to identify those parts of the works that had suffered delay, and how these contributed to overall project delay through tracking changes in the critical path over time.

WINDOWS DELAY ANALYSIS:

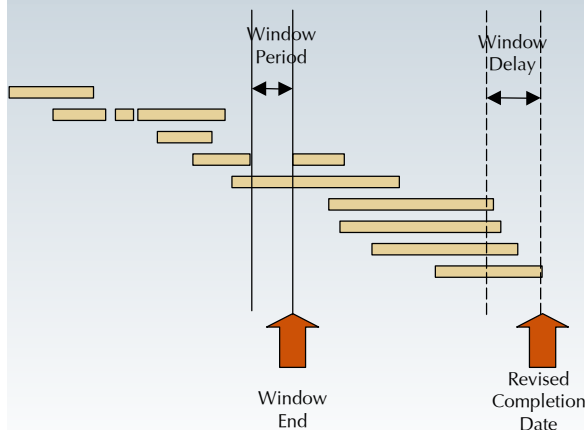
1 Analyse Programme at Window Start

At the commencement of the window, the programme is analysed, and the then anticipated completion date determined.



2 Analyse Programme at Window End

By comparing the programme at the end of the window, the effects of delay occurring within that period are captured. Delays to discrete activities can be analysed in detail to determine the contribution of each to critical delay.



3 Output of Windows Analysis

Windows analysis permits delays to be calculated taking fully into account shifts in critical path and contemporaneous decision making. Movements over time in progress of each activity are available.



A WINDOWS DELAY ANALYSIS EXAMPLE

Far Eastern Airport Services Delay Case

We were engaged by an international joint venture contractor who were employed to carry out the services installations to a new passenger terminal building to a major international airport in Asia.

The contractor had suffered prolongation and disruption through delays to the preceding building work, and had incurred significant expense through accelerating the works to achieve the politically driven airport opening date.

The joint venture contractor wished to understand where discrete delays had occurred to each of the principal services subcontract trades including ductwork, electrical, plumbing, fire safety, security and building management systems.

We provided the framework and approach for the analysis of a programme of over 5,000 activities over 24 separate monthly time windows using the contractors' own progress reports and updated programmes, to determine the key time windows and areas where time was lost contributing to the overall project delay.

Using this analysis, we were able to advise the joint venture's subcontractors on areas where further analysis would be required by them to enable a fully integrated submission to be provided.

We produced a board level report into delay and cost matters on the basis of which the services contractor was able to settle the dispute.