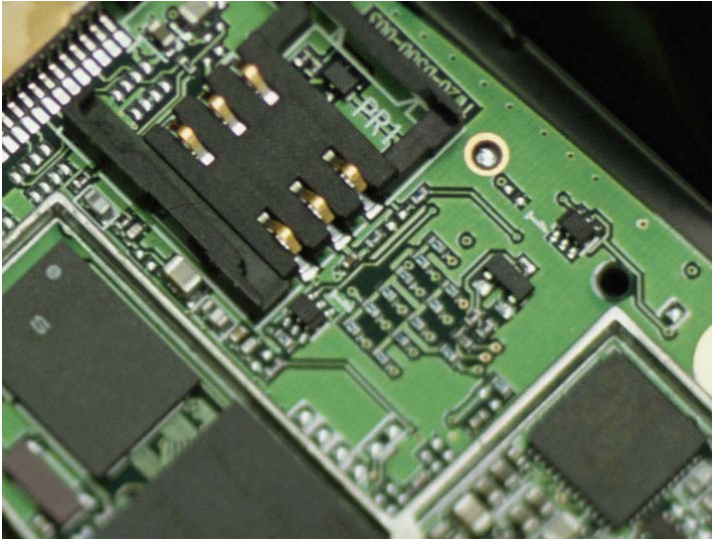


Computer Forensics



In today's electronic age, computers are the source of a wealth of information during investigations. PricewaterhouseCoopers (PwC) Investigations & Forensic Services is one of the few organizations that offers a complete computer forensics service to identify, collect, extract, recover, organize and analyze computer data.

Handling computer data properly is the biggest challenge facing an organization when responding to fraud, court orders or regulatory investigations. PwC's computer forensics professionals are trained and experienced to ensure the security of computer data, while maintaining its evidentiary value and chain-of-custody to allow its admissibility in court.

When a dispute arises, computer data can be invaluable to your case, but you will need to address the following questions:

- Will you be able to identify, collect and organize thousands of electronic documents, databases and other sources of data for analysis in a timely fashion?
- Can you recognize and retrieve electronic documents that were intentionally hidden, password-protected, encrypted or deleted?
- How will you ensure that you have examined all available data?
- What makes you certain that data isn't damaged or altered during examination?
- Can you guarantee the evidence you collect is legally admissible in court?

The Forensic Technology Solutions (FTS) team at PwC will allow you to answer these questions and many more to ensure electronic data is handled and analyzed properly. Our expertise and proprietary forensic software tools can provide simplified and remote access to the data you are seeking.

Continued...

Computer Forensics

Examples of our tools include:

- **Fraud Analysis Tool:** Transaction or accounting data is the core of any financial fraud investigation. Therefore, it is imperative that the relevant information population is identified from a large pool of accounting data. There is often a need to perform complex, in-depth analysis of financial data that originates from multiple data sources. The fraud analysis tool incorporates well-developed data mining procedures to identify suspect or fraudulent transactions and entities.
- **General Ledger Tool:** Many corporations often find it difficult to undertake the demanding analysis of accounting data during an investigation or litigation, due to time and system capability constraints. Working directly with your designated staff or counsel, we, at PwC, can quickly extract information from a corporate system to allow in-depth analysis of relevant data. Our dedicated forensic labs in Canada and throughout the world are capable of handling large amounts of data, and can process it at a rapid pace. Based on your scope of investigation, we can pinpoint areas of focus so that the time used on analysis of data is well spent.
- **eDocument Review Tool:** The volume of information that is created, exchanged and stored in electronic form is staggering e.g., one gigabyte is approximately the equivalent of a 250,000 page document. Extracting data from computers without altering its evidentiary values can be quite complicated and challenging. The Web-enabled eDocument Review Tool eliminates duplicates and provides robust searching and classification capabilities during an electronic review of e-mail messages, attachments and other relevant electronic documents.

With global offices in 139 countries and a team of over 120,000 people, PwC is the brand name for professional business services across the globe. Our diverse background and skill-sets will benefit you in your computer forensics undertakings, regardless of how big or small the project.