

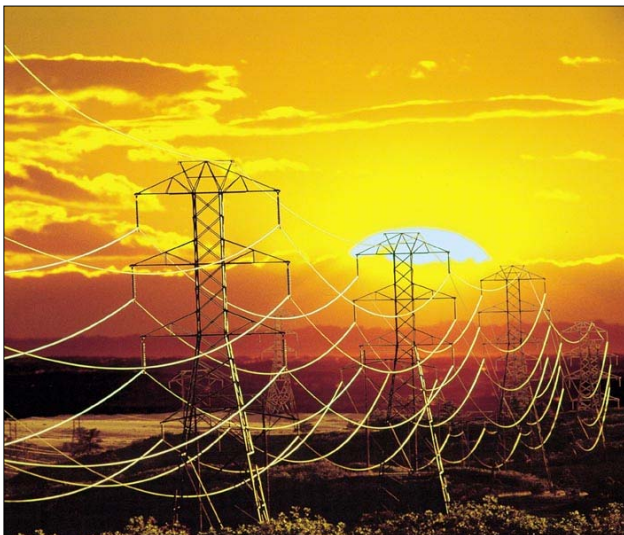
Global Risk Management Solutions

Business Continuity Planning

Are you concerned about how you would cope with a disruption to your business?

Are you worried about the effect a delay might have on the completion of a project?

*Then you should be thinking about **Business Continuity Planning**.*



PricewaterhouseCoopers has a global Business Continuity Planning (BCP) practice working with an integrated set of tools and methodologies to ensure a consistent approach is followed wherever our clients are located. Through working with a wide variety of clients in different industries, we are aware of the increasing complexity of operational linkages caused by factors such as:

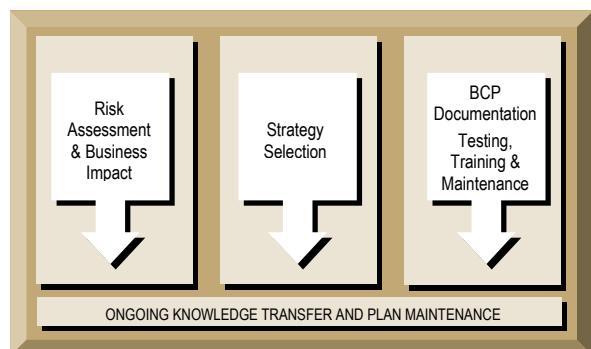
- Outsourcing
- E-commerce
- Global opportunities
- Regulatory scrutiny

These elements are combining to force businesses to be leaner, to react faster, to extend their presence in existing and new markets, to take greater care of customer data and ensure that customers are not disadvantaged as a result of foreseeable circumstances. By striving to capitalise on the new opportunities, companies are creating new dependencies and becoming reliant on new technologies for

which no fall-back mechanism exists – if that link fails, the business has no clearly defined means of rebuilding its operations.

In considering how best to plan for coping with a major disruption, it is prudent to make an initial judgement of how fast the pain will strike, where it will be felt most acutely and what circumstances are most likely to lead to a serious disruption to business operations.

PricewaterhouseCoopers has a suite of BCP products, each designed to interact with the others to ensure that we can provide the most effective solution for our clients. The **Traditional BCP** approach typically involves our consultants spending time on-site with the client to undertake an initial Business Impact Assessment. This will determine the key business functions and prioritise recovery objectives. This will be followed by an analysis of strategic recovery options which must be formally agreed by the client before work can proceed. Once a strategy has been selected, our consultants will document a full set of recovery actions for each business unit, together with linking elements, such as the Crisis Management structure.

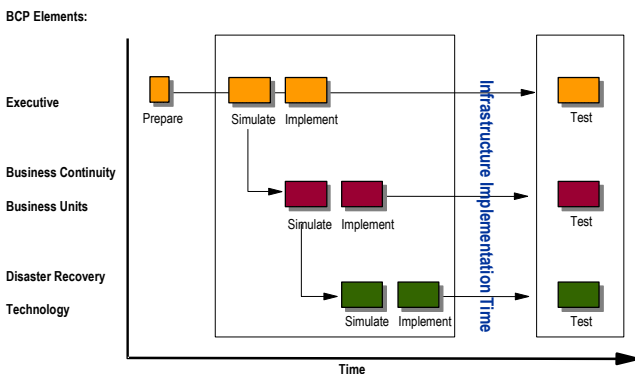


Traditional BCP Approach

For organisations requiring a more rapid, less detail-oriented approach, we have **FastTrack**. This approach aims to capture as much information as possible from a series of workshops led by our team of expert facilitators. Initially, we would aim to hold a workshop with senior management staff that would provide the bulk of the strategic recovery objectives.

A number of subsidiary workshops would then be held with operational staff to obtain the detailed sets of actions necessary to achieve the strategic recovery objectives. Responsibility for documenting and compiling the resultant sets of plans can fall either to the client or our consultants, or a combination of both.

FastTrack BCP Methodology Time Line



Both Traditional BCP and Fast Track BCP are designed to take your organisation through the whole cycle and deliver working continuity plans at the end of the process. Of course, you may want to look at specific elements of your contingency planning. To help you focus on specific areas of concern, PricewaterhouseCoopers has developed the BCP Healthcheck tool which can be used to give you an immediate assessment of the overall state of your organisation's level of preparedness, highlighting both strengths and weaknesses. Once you have identified those elements requiring further work, our consultants can provide expert assistance as needed, from defining critical technology requirements to reviewing strategy options to advising on the capabilities of disaster recovery facilities. In addition, we have developed a facilitated workshop approach for testing an organisation's Crisis Management function, which can also be extended to cover a full test of contingency arrangements and has, in the past, involved the use of actors for added dramatic effect.

In summary, if you believe you may be at risk of a disruption, the effect of which you are unable to calculate, we can be of assistance. We have a dedicated team of BCP specialists who are able to bring industry-specific expertise to bear in analysing your situation and providing you with practical, cost-effective solutions.

Global Risk Management Solutions (GRMS), part of PricewaterhouseCoopers, has over 6,500 professionals worldwide who offer a comprehensive enterprise-wide risk management service. Many of these professionals are specialists with in-depth knowledge and experience in particular industries.

The practice provides six key solutions designed to meet today's management issues. These solutions are Security & Technology, Operational Effectiveness, Audit & Compliance, Risk & Value Management, Sustainability and Behavioural Transformation.

Whether your risks are strategic, financial or operational in nature we work with you to identify and manage complex issues and risks to protect and enhance shareholder value. Our professionals are trained to take an enterprise-wide view of risk, address the full range of business needs from assessment and design to implementation and, where relevant, operation of the solution.

Contact Details

If you would like further details, please do not hesitate to contact the following:

Michael O'HEHIR + (66 2) 344-1241
michael.ohehir@th.pwc.com

Wanchai Pitakkorn + (66 2) 344-1362
wanchai.pitakkorn@th.pwc.com

Sarinya Piamsilpa + (66 2) 344-1492
sarinya.piamsilpa@th.pwc.com